

Anti-hsp90 alpha antibody

Clone	Cross reactivity	Application notes	Host	Isotype	Storage
4H7A5	Hu, Ms, Rat	WB, ICC	Rat	IgM, κ	-20°C

BACKGROUND : Heat shock proteins are chaperones that play an essential role in the protection of cells against numerous environmental stresses. The heat shock protein 90 (hsp90) is well known as a master regulator of protein folding.

Immunogen Synthetic peptide corresponding to the core region 36 aa (aa 406-441) of human hsp90 alpha peptide, YIDQEELNKTPIWTRNPDDITNEEYGEFYKSLTND

Host Rat

Isotype IgM, κ

Cross reactivity Human, Mouse, Rat
Other species have not been tested.

Specificity hsp90 alpha

Application notes Recommended use
WB, ICC Not tested for other applications.
Recommended dilutions
Western blotting, 1/1000 to 1/5000
Immunocytochemistry, 1/100 to 1/500
Optional dilutions/concentrations should be determined by the end user.

Source Culture Supernatant

Purification Ion-exchange chromatography

Form Liquid

Presentation Purified monoclonal antibody in PBS,
50% Glycerol, 0.05%w/v ProClin300

Concentration 1 mg/mL

Volume 100 μ L

Storage Store below -20°C
(below -70°C for prolonged storage)
Aliquot to avoid cycles of freeze/thaw.

References

Data

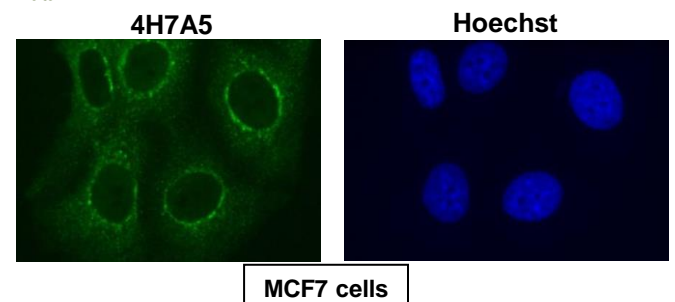


Fig.1 Immunocytochemistry/Immunofluorescence
- hsp90 alpha antibody (4H7A5)
MCF7 cells

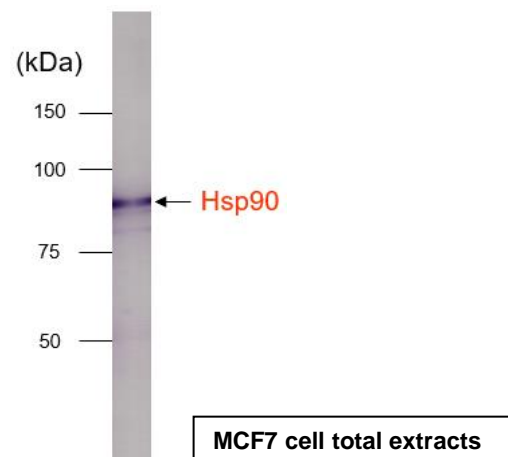


Fig.2 Western blot - hsp90 alpha antibody (4H7A5)
MCF7 cells total extracts