

# Anti-Nestin antibody

Clone	Cross reactivity	Application notes	Host	Isotype	Storage
7A3	Ms	ICC, IHC	Rat	IgG2b, $\kappa$	-20°C

**BACKGROUND** : Nestin is an embryonic intermediate filament that transiently expressed in the neural stem/progenitor cells in the developing central nervous system.

Immunogen mouse E16 embryonic cerebral cortex extracts

Data

Host Rat  
Isotype IgG2b,  $\kappa$   
Cross reactivity Mouse  
Other species have not been tested.  
Specificity Nestin  
Application notes Recommended use  
ICC, IHC, Not tested for other applications.  
Recommended dilutions  
Immunocytochemistry, 1/100 to 1/500  
Immunohistochemistry, 1/100 to 1/500  
This antibody doesn't work in western blot.  
Optional dilutions/concentrations should be determined by the end user.

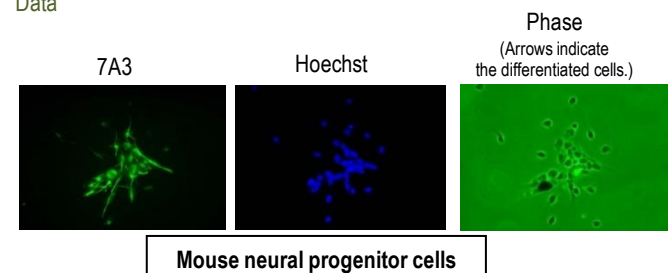


Fig.1 Immunocytochemistry/Immunofluorescence  
- Nestin antibody (7A3)  
Mouse neural progenitor cells

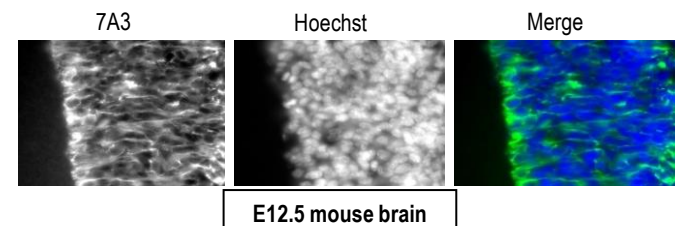


Fig.2 Immunohistochemistry/Immunofluorescence  
- Nestin antibody (7A3)  
E12.5 mouse brain

Source Culture Supernatant  
Purification Ion-exchange chromatography  
Form Liquid  
Presentation Purified monoclonal antibody in PBS,  
50% Glycerol, 0.05%w/v ProClin300  
Concentration 0.5 mg/mL  
Volume 200  $\mu$ L  
Storage Store below -20°C  
(below -70°C for prolonged storage)  
Aliquot to avoid cycles of freeze/thaw.

References