

Anti-Lgr5 antibody

Clone	Cross reactivity	Application notes	Host	Isotype	Storage
3E4-1A1	Hu	ICC, FCM	Rat	IgG2a, κ	-20°C

BACKGROUND : Lgr5 (Leucine-rich repeat-containing G-protein coupled receptor 5) also known as G-protein coupled receptor 49 (GPR49), is a seven-transmembrane protein of the class A Rhodopsin-like family of GPCRs. Lgr5 is a marker of normal stem cells in several tissues and some cancer stem cells.

Immunogen Recombinant full length human Lgr5 protein expressed in wheat germ cell-free system with liposome

Host Rat

Isotype IgG2a, κ

Cross reactivity Human
Other species have not been tested.

Specificity Lgr5

Application notes Recommended use
ICC, FCM Not tested for other applications.
Recommended dilutions
Immunocytochemistry, 1/100 to 1/500
Optional dilutions/concentrations should be determined by the end user.

Source Culture Supernatant

Purification Ion-exchange chromatography

Form Liquid

Presentation Purified monoclonal antibody in PBS,
50% Glycerol, 0.05%w/v ProClin300

Concentration 1 mg/mL

Volume 100 μ L

Storage Store below -20°C
(below -70°C for prolonged storage)
Aliquot to avoid cycles of freeze/thaw.

References

Data

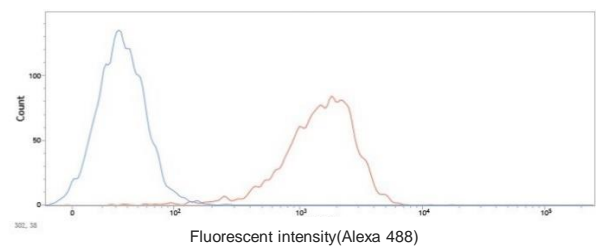


Fig.1 FCM analysis of the expression of Lgr5. HepG2 cells were labeled with MAb 3E4-1A1 (red line) or isotype control MAb(blue line), and were then stained with Alexa488-conjugated secondary antibody.

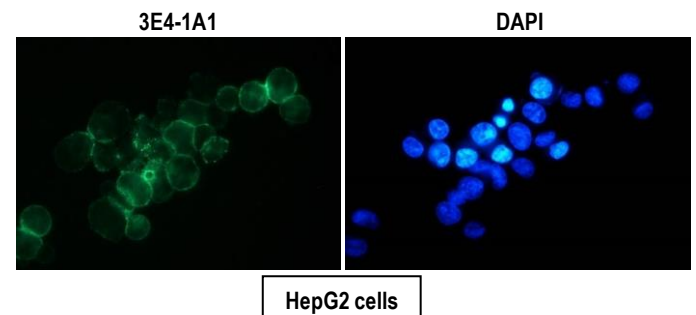


Fig.2 Immunocytochemistry/Immunofluorescence
- Lgr5 antibody (3E4-1A1)
HepG2 cells
*HepG2 cells were incubated with MAb 3E4-1A1 prior to fixation.