

# Anti-Glis1 antibody

Clone	Cross reactivity	Application notes	Host	Isotype	Storage
7-14	Hu, Ms	WB, ICC	Rat	IgG1, $\kappa$	-20°C

**BACKGROUND** : Glis1 is a GLI-related Kruppel-like zinc finger protein that functions as an activator and repressor of transcription. Glis1 has been shown to enhance the generation of iPS cells from fibroblasts when it is expressed together with Oct3/4, Sox2 and Klf4.

**Immunogen** Synthetic peptide corresponding to the core region 19 aa (aa 101-119) of human Glis1, CKKKVNGLRSPPLTGDLGGPSKR

**Host** Rat

**Isotype** IgG1,  $\kappa$

**Cross reactivity** Human, Mouse

Other species have not been tested.

**Specificity** Glis1

**Application notes** Recommended use

WB, ICC Not tested for other applications.

Recommended dilutions

Western blotting, 1/1000 to 1/5000

Immunocytochemistry, 1/100 to 1/500

Optional dilutions/concentrations should be determined by the end user.

**Source** Culture Supernatant

**Purification** Ion-exchange chromatography

**Form** Liquid

**Presentation** Purified monoclonal antibody in PBS, 50% Glycerol, 0.05%w/v ProClin300

**Concentration** 1 mg/mL

**Volume** 100  $\mu$ L

**Storage** Store below -20°C

(below -70°C for prolonged storage)

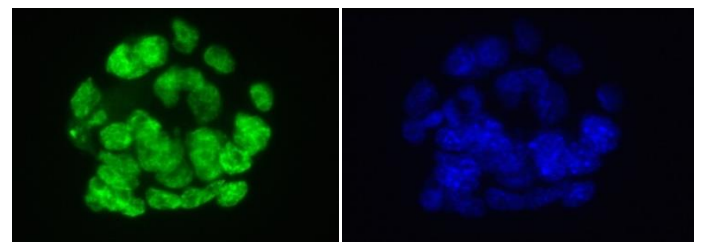
Aliquot to avoid cycles of freeze/thaw.

**References** 1)Maekawa et al., (2011) Direct reprogramming of somatic cells is promoted by maternal transcription factor Glis1. *Nature* . ;474(7350):225-229

Data

7-14

hoechst



mouse ES cells

Fig.1 Immunocytochemistry/Immunofluorescence - Glis1 antibody (7-14) mouse ES cells

(kDa)



mouse ES cell total extracts

Fig.2 Western blot - Glis1 antibody (7-14) mouse ES cell total extracts