

# Anti-Oct4/POU5F1 antibody

Clone	Cross reactivity	Application notes	Host	Isotype	Storage
1C10	Ms	WB, ICC	Rat	IgG2a, $\lambda$	-20°C

**BACKGROUND** : Oct4/Pou5f1 is a member of POU transcription factor family, which possess POU domain. This transcription factor forms a trimeric complex with SOX2 on DNA and controls the expression of a number of genes involved in embryonic development such as YES1, FGF4, UTF1 and ZFP206. Oct4/POU5F1 is critical for early embryogenesis and for embryonic stem cell pluripotency.

**Immunogen** Synthetic peptide corresponding to the C-terminal 15 aa (aa338-352) of mouse Oct4, PSVPVTALGSPMHSN

**Host** Rat

**Isotype** IgG2a,  $\lambda$

**Cross reactivity** Mouse

Other species have not been tested.

**Specificity** Oct4/Pou5f1

**Application notes** Recommended use

WB, ICC Not tested for other applications.

Recommended dilutions

Western blotting, 1/1000 to 1/5000

Immunocytochemistry, 1/100 to 1/500

Optional dilutions/concentrations should be determined by the end user.

**Source** Culture Supernatant

**Purification** Ion-exchange chromatography

**Form** Liquid

**Presentation** Purified monoclonal antibody in PBS,  
50% Glycerol, 0.05%w/v ProClin300

**Concentration** 1 mg/mL

**Volume** 100  $\mu$ L

**Storage** Store below -20°C

(below -70°C for prolonged storage)

Aliquot to avoid cycles of freeze/thaw.

**References** 1) Sternecker, J. et al. (2012) Oct4 and More: The Reprogramming Expressway. *STEM CELLS* .,30:15-21

2) Arakawa et al.,(2013) *Monoclonal Antibodies in Immunodiagnosis and Immunotherapy* .32, 229-231.

This antibody is used in ref.2.

**Data**

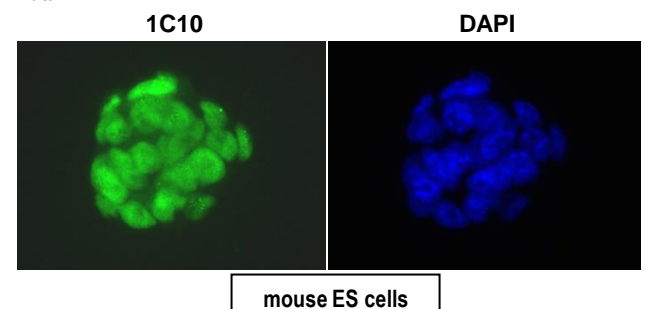


Fig.1 Immunocytochemistry/Immunofluorescence - Oct4 /POU5F1 antibody (1C10) mouse ES cells

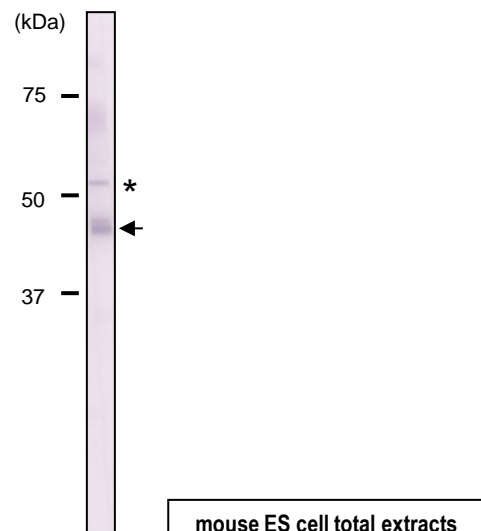


Fig.2 Western blot - Oct4 /POU5F1 antibody (1C10) mouse ES cell total extracts (\* possible glycosylated form, cross reactivity)