

# Anti-Prohibitin1 (PHB1) antibody

Clone	Cross reactivity	Application notes	Host	Isotype	Storage
1G5C1	Hu, Mk, Ms, Rat	WB, IHC	Rat	IgG2b, $\kappa$	-20°C

**BACKGROUND** : Prohibitin1 (PHB1), which was initially described as an inhibitor of cell proliferation, is a highly conserved protein found in multiple cellular compartments. In the nucleus it interacts with the transcriptional regulators Rb and E2F1 and controls cell proliferation and apoptosis.

**Immunogen** Synthetic peptide corresponding to the C-terminus region (aa 233-246) of human Prohibitin1, DGLIELRKLEAAED

**Host** Rat

**Isotype** IgG2b,  $\kappa$

**Cross reactivity** Human, Monkey, Mouse, Rat  
Other species have not been tested.

**Specificity** Prohibitin1

**Application notes** Recommended use  
WB, IHC, Not tested for other applications.  
Recommended dilutions  
Western blotting, 1/1000 to 1/5000  
Immunohistochemistry, 1/100 to 1/500  
Optional dilutions/concentrations should be determined by the end user.

**Source** Culture Supernatant

**Purification** Ion-exchange chromatography

**Form** Liquid

**Presentation** Purified monoclonal antibody in PBS,  
50% Glycerol, 0.05%w/v ProClin300

**Concentration** 1 mg/mL

**Volume** 100  $\mu$ L

**Storage** Store below -20°C  
(below -70°C for prolonged storage)  
Aliquot to avoid cycles of freeze/thaw.

**References** 1) Schneider et al.,(2010) Prohibitin1 acts as a neural crest specifier in *Xenopus* development by repressing the transcription factor E2F1. *Development*, 137, 4073-4081.  
2) *TOXICOLOGICAL SCIENCES*, (2011) 119: 61-72.  
This antibody is used in ref.2.

## Data

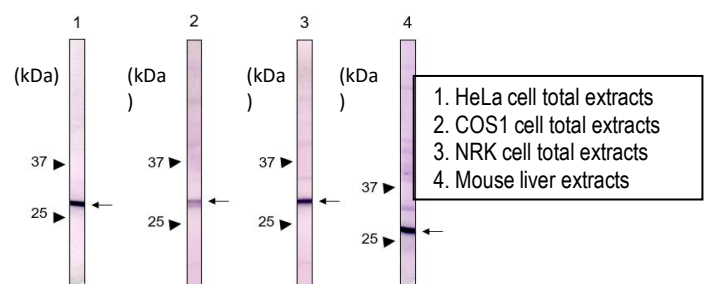


Fig.1 Western blot - Prohibitin1(PHB1) antibody (1G5C1)  
1. HeLa cell, 2. COS1 cell, 3. NRK cell, 4. Mouse liver total extracts