

Anti-Septin9 isoform3

Clone	Cross reactivity	Application notes	Host	Isotype	Storage
1A6C2	Hu, Mk, Ms, Rat	WB, ICC, IHC	Rat	IgG2a, κ	-20°C

BACKGROUND : The septin GTPase family have several roles during cell division, cytoskeletal organization and membrane-remodeling events. Spetin 9, a member of the septin family, has several splicing variants and has been reported to be highly expressed in some cancer cells.

Immunogen Synthetic peptide corresponding to the N-terminus region (aa 1 - 11) of rat Septin9 isoform3, MERDRITALKRC

Host Rat

Isotype IgG2a, κ

Cross reactivity Human, Monkey, Mouse, Rat

Other species have not been tested.

Specificity Septin9 variant3

Application notes Recommended use

WB, ICC, IHC, Not tested for other applications.

Recommended dilutions

Western blotting, 1/1000 to 1/5000

Immunocytochemistry, 1/100 to 1/500

Immunohistochemistry, 1/100 to 1/500

Optional dilutions/concentrations should be determined by the end user.

Source Culture Supernatant

Purification Ion-exchange chromatography

Form Liquid

Presentation Purified monoclonal antibody in PBS,
50% Glycerol, 0.05%w/v ProClin300

Concentration 1 mg/mL

Volume 100 μL

Storage Store below -20°C

(below -70°C for prolonged storage)

Aliquot to avoid cycles of freeze/thaw.

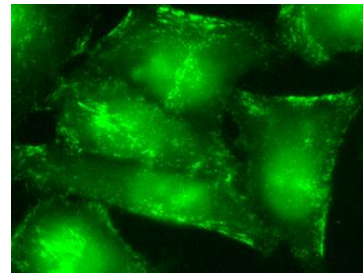
References 1) *TOXICOLOGICAL SCIENCES* ,(2011) 119: 61–72.

2) *Breast Cancer Research* , (2011) 13:R76

3) *Scientific Reports*. (2017); 7: 44976.

This antibody is used in ref.1, 2 and 3.

Data



HeLa cells

Fig.1 Immunocytochemistry/Immunofluorescence - Septin9 isoform3 antibody (1A6C2)

HeLa cells

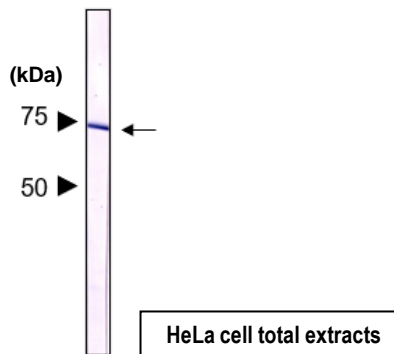


Fig.2 Western blot - Septin9 isoform3 antibody (1A6C2) HeLa cell total extracts

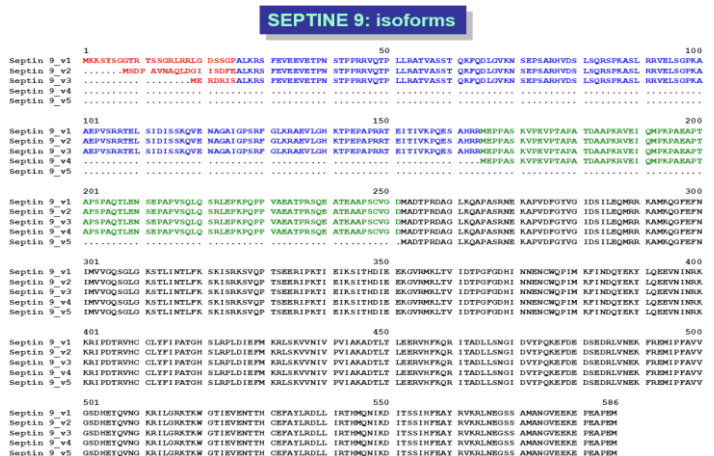


Fig.3 Multiple sequence alignment of human Septin9 isoforms