

Anti-Septin9 isoform2

Clone	Cross reactivity	Application notes	Host	Isotype	Storage
5A6F5	Hu, Ms, Rat	WB, ICC	Rat	IgG2a, λ	-20°C

BACKGROUND : The septin GTPase family have several roles during cell division, cytoskeletal organization and membrane-remodeling events. Spetin 9, a member of the septin family, has several splicing variants and has been reported to be highly expressed in some cancer cells.

Immunogen Synthetic peptide corresponding to the N-terminus region (aa 1-23) of human Septin9 isoform2, MSDPAVNAQLDGIISDFEALKRSC

Host Rat

Isotype IgG2a, λ

Cross reactivity Human, Mouse, Rat

Other species have not been tested.

Specificity Septin9 variant2

Application notes Recommended use

WB, ICC Not tested for other applications.

Recommended dilutions

Western blotting, 1/1000 to 1/5000

Immunocytochemistry, 1/100 to 1/500

Optional dilutions/concentrations should be determined by the end user.

Source Culture Supernatant

Purification Ion-exchange chromatography

Form Liquid

Presentation Purified monoclonal antibody in PBS, 50% Glycerol, 0.05%w/v ProClin300

Concentration 0.5 mg/mL

Volume 200 μ L

Storage Store below -20°C

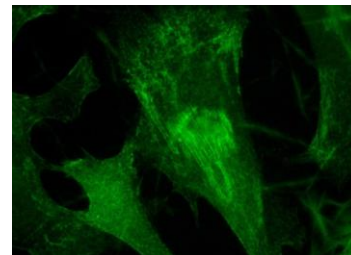
(below -70°C for prolonged storage)

Aliquot to avoid cycles of freeze/thaw.

References 1) *Scientific Reports*. (2017); 7: 44976.

This antibody is used in ref.1

Data

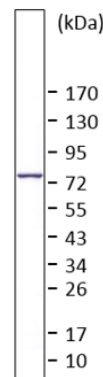


NHDF cells

Fig.1 Immunocytochemistry/Immunofluorescence

- Septin9 isoform2 antibody (5A6F5)

NHDF cells



NRK cell total extracts

Fig.2 Western blot - Septin9 isoform2 antibody (5A6F5)

NRK cell total extracts

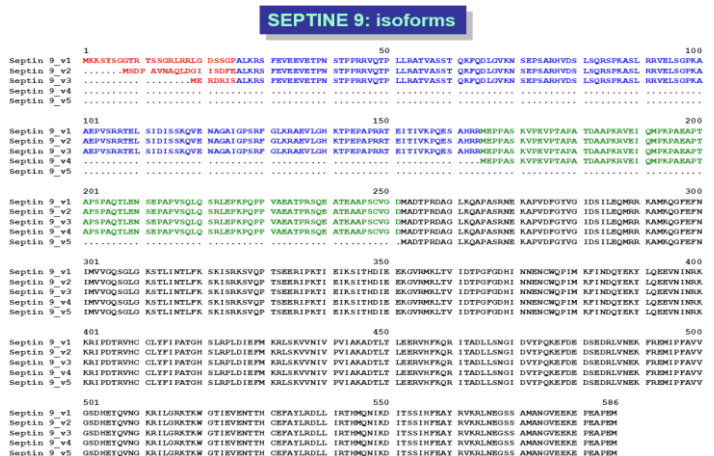


Fig.3 Multiple sequence alignment of human Septin9 isoforms