

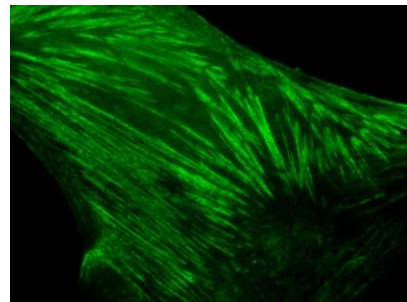
Anti-Septin9 PanC

Clone	Cross reactivity	Application notes	Host	Isotype	Storage
1G7	Hu	WB, ICC	Mouse	IgG1, κ	-20°C

BACKGROUND : The septin GTPase family have several roles during cell division, cytoskeletal organization and membrane-remodeling events. Spetin 9, a member of the septin family, has several splicing variants and has been reported to be highly expressed in some cancer cells.

Immunogen Synthetic peptide corresponding to the C-terminus region (aa 573-586) of human Septin9, CANGMEEKEPEAPEM

Data



NHDF cells

Fig.1 Immunocytochemistry/Immunofluorescence - Septin9 PanC antibody (1G7) NHDF cells

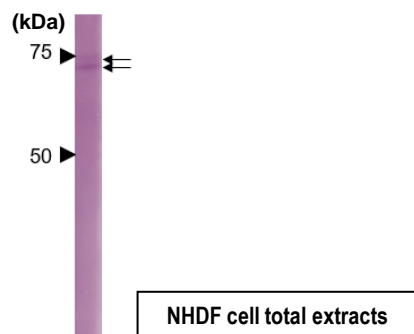


Fig.2 Western blot - Septin9 antibody (1G7) NHDF cell total extracts

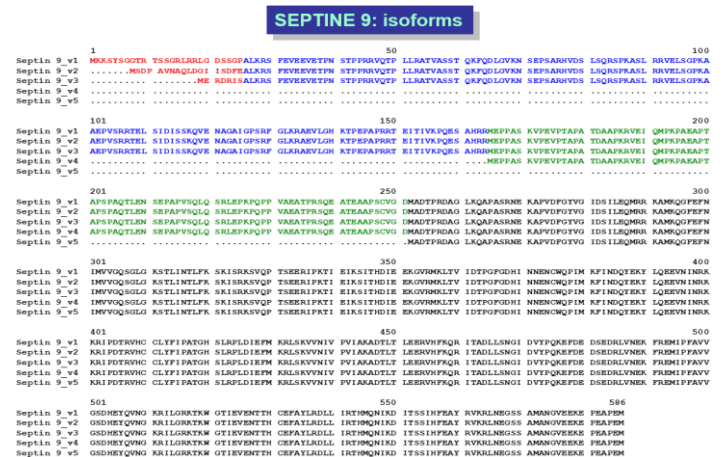


Fig.3 Multiple sequence alignment of human Septin9 isoforms

Host Mouse
Isotype IgG1, κ
Cross reactivity Human
Other species have not been tested.
Specificity Septin9 PanC
Application notes Recommended use
WB, ICC Not tested for other applications.
Recommended dilutions
Western blotting, 1/1000 to 1/5000
Immunocytochemistry, 1/100 to 1/500
Optional dilutions/concentrations should be determined by the end user.

Source Culture Supernatant
Purification Ion-exchange chromatography
Form Liquid
Presentation Purified monoclonal antibody in PBS,
50% Glycerol, 0.05w/v ProClin300
Concentration 0.5 mg/mL
Volume 200 μ L
Storage Store below -20°C
(below -70°C for prolonged storage)
Aliquot to avoid cycles of freeze/thaw.

References 1) *Scientific Reports*. (2017); 7: 44976.
This antibody is used in ref.1