

Anti-CAP-H2(Condensin II subunit) antibody

Clone	Cross reactivity	Application notes	Host	Isotype	Storage
5F2G4	Hu, Mk	WB, ICC, IP	Rat	IgG2a, κ	-20°C

BACKGROUND : CAP-H2 is regulatory subunit of the condensin-2 complex, a complex that seems to provide chromosomes with an additional level of organization and rigidity and in establishing mitotic chromosome architecture. This protein may play a role in lineage-specific role in T-cell development.

Immunogen Recombinant GST-fused human CAP-H2 (full-length)

Host Rat
Isotype IgG2a, κ
Cross reactivity Human, Monkey
Other species have not been tested.
Specificity CAP-H2 (Condensin II subunit)
Application notes Recommended use
WB, ICC, IP Not tested for other applications.
Recommended dilutions
Western blotting, 1/1000
Immunocytochemistry, 1/1000
IF method : Fix the cultured cells with 1.8% PFA(or FA)
for 5min.
Optional dilutions/concentrations should be determined
by the end user.

Source Culture Supernatant
Purification Ion-exchange chromatography
Form Liquid
Presentation Purified monoclonal antibody in PBS,
50% Glycerol, 0.05%w/v ProClin300
Concentration 0.5 mg/mL
Volume 200 μ L
Storage Store below -20°C
(below -70°C for prolonged storage)
Aliquot to avoid cycles of freeze/thaw.

References 1) Wood et al., (2010) *Nat. Rev. Genet.* , 11, 391-404.
2) Hihara et al.,(2012) *Cell Rep.* 2, 1645-1656.
This antibody is used in ref.2.

Data

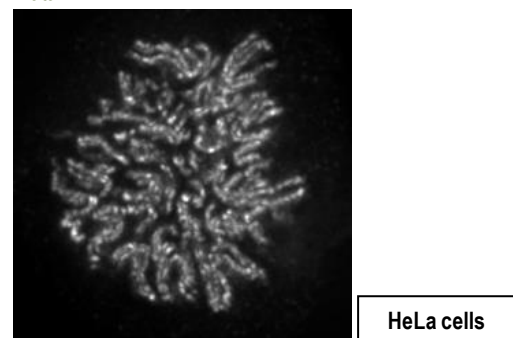


Fig.1 Immunocytochemistry/Immunofluorescence
- Condensin II complex, subunit CAP-H2 antibody (5F2G4)
HeLa cells

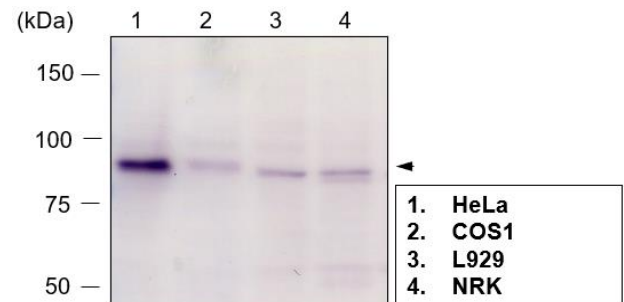


Fig.2 Western blot
- Condensin II complex, subunit CAP-H2 antibody (5F2G4)
1. HeLa cell, 2. COS1 cell, 3. L929 cell, 4. NRK cell total extracts