

Anti-INI1/BAF47/hSNF5 antibody

| Clone | Cross reactivity | Application notes | Host | Isotype | Storage |
|-------|------------------|-------------------|-------|-----------------|---------|
| 2C2 | Hu, Ms | WB, ICC, IHC | Mouse | IgG2a, κ | -20°C |

BACKGROUND : INI1/BAF47/hSNF5 is a core component of the BAF (SWI/hSNF) complex. This ATP-dependent chromatin-remodeling complex plays important roles in cell proliferation and differentiation, in cellular antiviral activities and inhibition of tumor formation. The BAF complex is able to create a stable, altered form of chromatin that constrains fewer negative supercoils than normal.

Immunogen Recombinant GST-fused human INI1(full length)

Host Mouse
Isotype IgG2a, κ
Cross reactivity Human, Mouse
Other species have not been tested.
Specificity INI1/BAF47/hSNF5/SMARCB1
Application notes Recommended use
WB, ICC, IHC Not tested for other applications.
Recommended dilutions
Western blotting, 1/1000 to 1/5000
Immunocytochemistry, 1/500
Immunohistochemistry, 1/100 to 1/500
Optional dilutions/concentrations should be determined by the end user.

Source Culture Supernatant
Purification Ion-exchange chromatography
Form Liquid
Presentation Purified monoclonal antibody in PBS,
50% Glycerol, 0.05%w/v ProClin300
Concentration 1 mg/mL
Volume 100 μ L
Storage Store below -20°C
(below -70°C for prolonged storage)
Aliquot to avoid cycles of freeze/thaw.

References 1) Hollmann and Hornick, (2011) *Am J Surg Pathol.* 35, e47-63.
2) Harada et al.,(2014) *Monoclonal Antibodies in Immunodiagnosis and Immunotherapy* . in press.
This antibody is used in ref.2.

Data

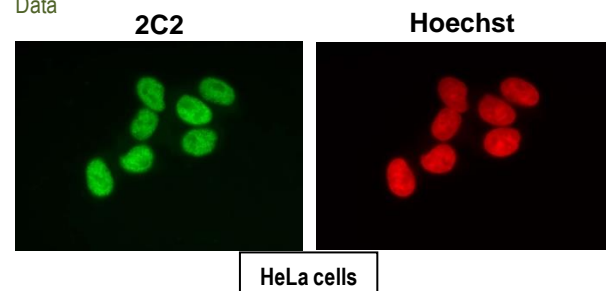


Fig.1 Immunocytochemistry/Immunofluorescence - Ini1/hSNF5/BAF47 antibody (2C2) HeLa cells

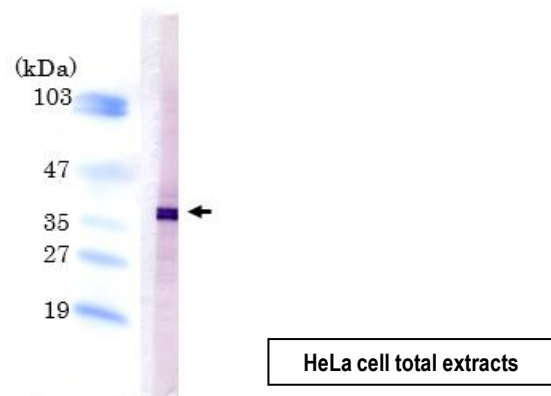


Fig.2 Western blot - Ini1/hSNF5/BAF47 antibody (2C2) HeLa cell total extracts