

Anti-Brg1 antibody(Clone No.5B7)

Clone	Cross reactivity	Application notes	Host	Isotype	Storage
5B7	Hu, Mk, Ms	WB, ICC, IHC, ChIP, IP	Rat	IgG2a, κ	-20°C

BACKGROUND : Brm-related gene-1 (Brg1) is a catalytic subunit of the SWI/SNF chromatin remodeling enzyme complex that has ATPase activity. This complex facilitates chromatin remodeling for gene expression by utilizing energy for ATP hydrolysis. It is well known that the SWI/SNF chromatin remodeling enzyme complex is essential for cell differentiation, cell cycle regulation, and embryogenesis.

Immunogen Recombinant GST-fused N-terminus region of human Brg1 (aa 213-295)

Host Rat

Isotype IgG2a, κ

Cross reactivity Human, Monkey, Mouse
Other species have not been tested.

Specificity Brg1

Application notes Recommended use
WB, ICC, IHC, ChIP, IP
Recommended dilutions
Western blotting, 1/1000 to 1/5000
Immunocytochemistry, 1/100 to 1/500
Immunohistochemistry, 1/100 to 1/500
Optional dilutions/concentrations should be determined by the end user.

Data

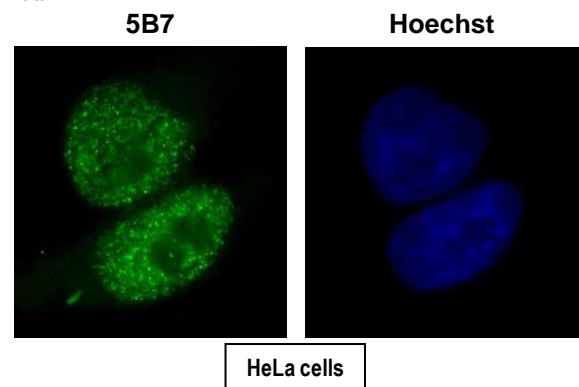


Fig.1 Immunocytochemistry/Immunofluorescence - Brg1 antibody (5B7)
HeLa cells

Source Culture Supernatant

Purification Ion-exchange chromatography

Form Liquid

Presentation Purified monoclonal antibody in PBS,
50% Glycerol, 0.05%w/v ProClin300

Concentration 1 mg/mL

Volume 100 μ L

Storage Store below -20°C
(below -70°C for prolonged storage)
Aliquot to avoid cycles of freeze/thaw.

References 1) de la Serna et al., J Biol Chem. 2006, 28:20233-20241.
2) Ohkawa et al., (2007) J. Biol. Chem. 282, 6564-6570.
3) Ohkawa et al., (2010) *Hybridoma*, 6, 463-466.
This antibody is used in ref.1, 2 and 3.

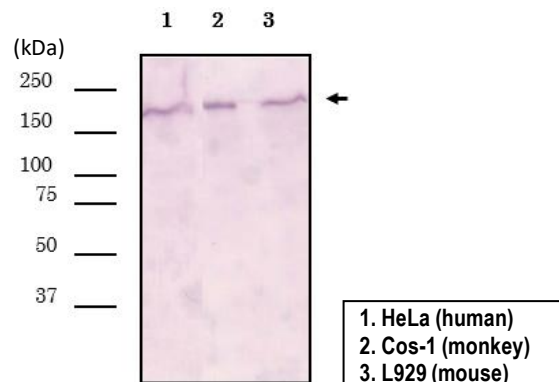


Fig.2 Western blot - Brg1 antibody (5B7)
1. HeLa cell, 2. Cos-1 cell, 3. L929 cell total extracts