

Anti-Brg1 antibody(Clone No.3G4)

Clone	Cross reactivity	Application notes	Host	Isotype	Storage
3G4	Hu, Mk, Ms	WB, ICC, IHC, ChIP, IP	Rat	IgG1, κ	-20°C

BACKGROUND : Brm-related gene-1 (Brg1) is a catalytic subunit of the SWI/SNF chromatin remodeling enzyme complex that has ATPase activity. This complex facilitates chromatin remodeling for gene expression by utilizing energy for ATP hydrolysis. It is well known that the SWI/SNF chromatin remodeling enzyme complex is essential for cell differentiation, cell cycle regulation, and embryogenesis.

Immunogen Recombinant GST-fused N-terminus region of human Brg1 (aa 213-295)

Host Rat

Isotype IgG1, κ

Cross reactivity Human, Monkey, Mouse
Other species have not been tested.

Specificity Brg1

Application notes Recommended use
WB, ICC, IHC, ChIP, IP
Recommended dilutions
Western blotting, 1/1000 to 1/5000
Immunocytochemistry, 1/100 to 1/500
Immunohistochemistry, 1/100 to 1/500
Optional dilutions/concentrations should be determined by the end user.

Source Culture Supernatant

Purification Ion-exchange chromatography

Form Liquid

Presentation Purified monoclonal antibody in PBS,
50% Glycerol, 0.05%w/v ProClin300

Concentration 0.5 mg/mL

Volume 200 μ L

Storage Store below -20°C
(below -70°C for prolonged storage)
Aliquot to avoid cycles of freeze/thaw.

References 1) Ohkawa et al., (2007) *J. Biol. Chem.* 282, 6564-6570.
2) Ohkawa et al., (2010) *Hybridoma*, 6, 463-466.
This antibody is used in ref.1 and 2.

Data

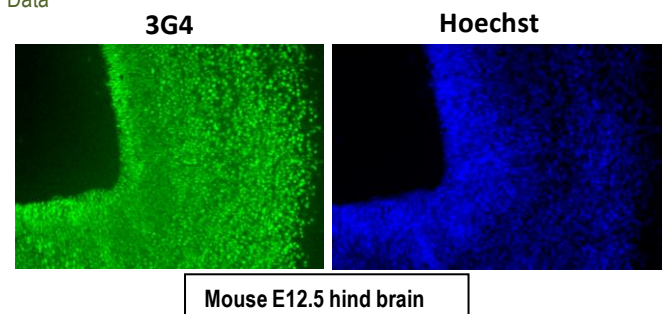


Fig.1 Immunohistochemistry/Immunofluorescence - Brg1 antibody (3G4) mouse E12.5 hind brain

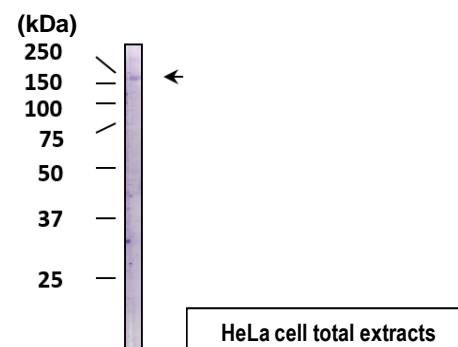


Fig.2 Western blot - Brg1 antibody (3G4) HeLa cell total extracts