

Anti-C/EBP β antibody

Clone	Cross reactivity	Application notes	Host	Isotype	Storage
7D2	Ms	WB, ICC, IHC	Rat	IgG2a, κ	-20°C

BACKGROUND : C/EBP beta is a bZIP transcription factor which can bind as a homodimer to certain DNA regulatory regions. It can also form heterodimers with the related proteins CEBP-alpha, CEBP-delta, and CEBP-gamma. This protein is important in the regulation of genes involved in immune and inflammatory responses and has been shown to bind to the IL-1 response element in the IL-6 gene, as well as to regulatory regions of several acute-phase and cytokine genes.

Immunogen Recombinant GST-fused mouse C/EBP beta (full length)

Host Rat
Isotype IgG2a, κ
Cross reactivity Mouse
Other species have not been tested.
Specificity C/EBP beta
Application notes Recommended use
WB, ICC, IHC Not tested for other applications.
Recommended dilutions
Western blotting, 1/1000 to 1/5000
Immunocytochemistry, 1/100 to 1/500
Immunohistochemistry, 1/100 to 1/500
Optional dilutions/concentrations should be determined by the end user.

Source Culture Supernatant
Purification Ion-exchange chromatography
Form Liquid
Presentation Purified monoclonal antibody in PBS,
50% Glycerol, 0.05%w/v ProClin300
Concentration 0.5 mg/mL
Volume 200 μ L
Storage Store below -20°C
(below -70°C for prolonged storage)
Aliquot to avoid cycles of freeze/thaw.

References 1) Tsukada et al., (2011) *Cytokine* , 54, 6-19.
2) Harada et al.,(2014) *Monoclonal Antibodies in Immunodiagnosis and Immunotherapy* . in press.
This antibody is used in ref.2.

Data

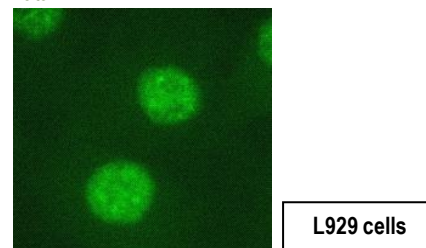


Fig.1 Immunocytochemistry/Immunofluorescence - C/EBP beta antibody (7D2) L929 (mouse) cells

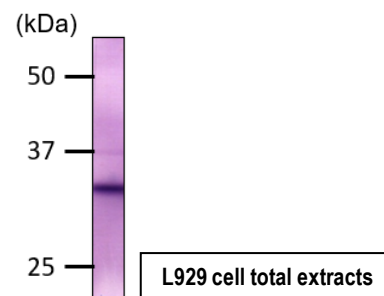


Fig.2 Western blot - C/EBP beta antibody (7D2) L929 (mouse) cell total extracts