

# Anti-Nup153 antibody(Clone No.7F9E12)

Clone	Cross reactivity	Application notes	Host	Isotype	Storage
7F9E12	Hu	WB, ICC	Rat	IgG2a	-20°C

**BACKGROUND** : Nup153 is a major component of the NPC (Nuclear pore complex) which is extremely elaborate structure that mediate the regulated movement of macromolecules between the nucleus and cytoplasm.

**Immunogen** Synthetic peptide corresponding to C-terminal 17aa of human Nup153, GTSVSGRKIKTAVRRKK

**Host** Rat

**Isotype** IgG2a

**Cross reactivity** Human

Other species have not been tested.

**Specificity** Nup153

**Application notes** Recommended use

WB, ICC Not tested for other applications.

Recommended dilutions

Western blotting, 1/1000 to 1/5000

Immunocytochemistry, 1/100 to 1/500

Optional dilutions/concentrations should be determined by the end user.

**Source** Culture Supernatant

**Purification** Ion-exchange chromatography

**Form** Liquid

**Presentation** Purified monoclonal antibody in PBS, 50% Glycerol, 0.05%w/v ProClin300

**Concentration** 1 mg/mL

**Volume** 100 µL

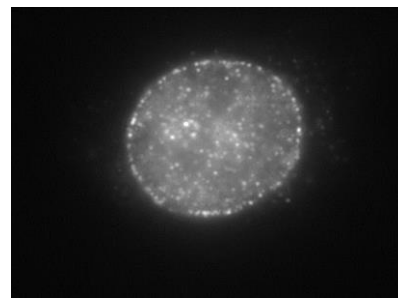
**Storage** Store below -20°C

(below -70°C for prolonged storage)

Aliquot to avoid cycles of freeze/thaw.

**References** 1) Ball and Ullman, (2005) *Chromosoma*, 114, 319-330.

**Data**



HeLa cells

Fig.1 Immunocytochemistry/Immunofluorescence  
- Nup153 antibody (7F9E12)  
HeLa cells