

Anti-Nup153 antibody(Clone No.R3G1)

Clone	Cross reactivity	Application notes	Host	Isotype	Storage
R3G1	Hu, Ms, Mk, Rat	WB, ICC	Rat	IgG2a, κ	-20°C

BACKGROUND : Nup153 is a major component of the NPC (Nuclear pore complex) which is extremely elaborate structure that mediate the regulated movement of macromolecules between the nucleus and cytoplasm.

Immunogen Recombinant GST-fused rat Nup153 (aa 610-1191)

Host Rat
Isotype IgG2a, κ
Cross reactivity Human, Mouse, Monkey, Rat
Other species have not been tested.
Specificity Nup153
Application notes Recommended use
WB, ICC Not tested for other applications.
Recommended dilutions
Western blotting, 1/1000 to 1/5000
Immunocytochemistry, 1/100 to 1/500
Optional dilutions/concentrations should be determined
by the end user.

Source Culture Supernatant
Purification Ion-exchange chromatography
Form Liquid
Presentation Purified monoclonal antibody in PBS,
50% Glycerol, 0.05%w/v ProClin300
Concentration 1 mg/mL
Volume 100 μ L
Storage Store below -20°C
(below -70°C for prolonged storage)
Aliquot to avoid cycles of freeze/thaw.

References

Data

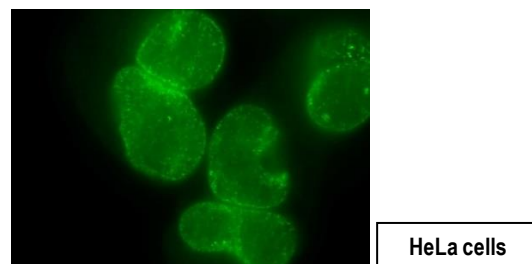


Fig.1 Immunocytochemistry/Immunofluorescence
- Nup153/p153 antibody (R3G1)
HeLa cells

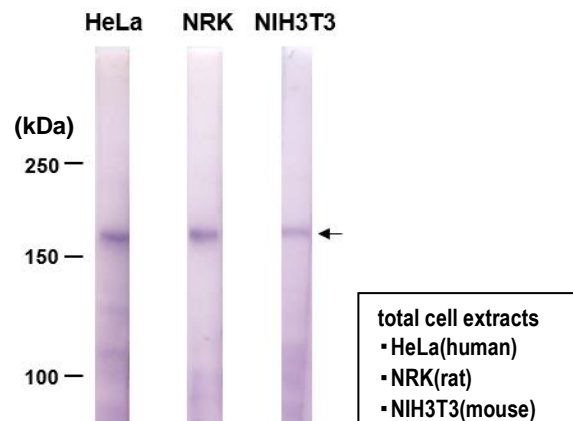


Fig.2 Western blot - Nup153/p153 antibody (R3G1)
HeLa cell, NRK cell, NIH3T3 cell total extracts