

Anti-Nup98/p98 antibody

Clone	Cross reactivity	Application notes	Host	Isotype	Storage
2H10	Hu, Rat	WB, ICC, IHC	Rat	IgG2c, κ	-20°C

BACKGROUND : Nup98/p98 is a component of the NPC (nuclear pore complex), which are large protein assemblies embedded in the nuclear envelope. Nup98 has been reported to interact with several transport factors and play a critical part in nuclear trafficking.

Immunogen Recombinant GST-fused N-terminus fragment of human Nup98/p98 (aa 1-466)

Host Rat

Isotype IgG2c, κ

Cross reactivity Human, Rat
Other species have not been tested.

Specificity Nup98/p98

Application notes Recommended use
WB, ICC, IHC Not tested for other applications.
Recommended dilutions
Western blotting, 1/1000 to 1/5000
Immunocytochemistry, 1/100 to 1/500
Immunohistochemistry, 1/100 to 1/500
Optional dilutions/concentrations should be determined by the end user.

Source Culture Supernatant

Purification Ion-exchange chromatography

Form Liquid

Presentation Purified monoclonal antibody in PBS,
50% Glycerol, 0.05%w/v ProClin300

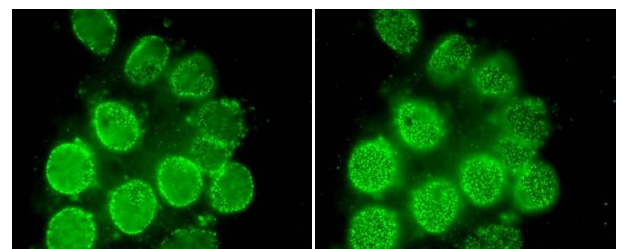
Concentration 1 mg/mL

Volume 100 μ L

Storage Store below -20°C
(below -70°C for prolonged storage)
Aliquot to avoid cycles of freeze/thaw.

References 1) Fukuhara et al., *HYBRIDOMA*, (2005) 24:244-247.
2) Oka et al., *Mol.Biol.Cell.*, (2010) 21:1885-1896
This antibody is used in ref.1 and 2.

Data



rat neuron

Fig.1 Immunocytochemistry/Immunofluorescence
- Nup98/p98 antibody (2H10)
rat neuron

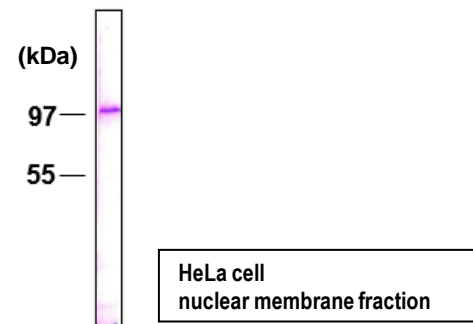


Fig.2 Western blot - Nup98/p98 antibody (2H10)
HeLa cell nuclear membrane fraction