

Anti-Nup62/p62 antibody(Clone No.8A12)

Clone	Cross reactivity	Application notes	Host	Isotype	Storage
8A12	Hu, Ms	WB, ICC	Rat	IgG2a, κ	-20°C

BACKGROUND : Nup62/p62 is a major component of the NPC (Nuclear pore complex), has been reported to interact directly with several nuclear transport factors, including importin-beta and NTF2.

Immunogen Recombinant GST-fused N-terminus fragment of human Nup62/p62 (aa 1-300)

Host Rat

Isotype IgG2a, κ

Cross reactivity Human, Mouse
Other species have not been tested.

Specificity Nup62/p62

Application notes Recommended use
WB, ICC Not tested for other applications.
Recommended dilutions
Western blotting, 1/1000 to 1/5000
Immunocytochemistry, 1/100 to 1/500
Optional dilutions/concentrations should be determined by the end user.

Source Culture Supernatant

Purification Ion-exchange chromatography

Form Liquid

Presentation Purified monoclonal antibody in PBS,
50% Glycerol, 0.05%w/v ProClin300

Concentration 1 mg/mL

Volume 100 μ L

Storage Store below -20°C
(below -70°C for prolonged storage)
Aliquot to avoid cycles of freeze/thaw.

References 1) Fukuhara et al., *Hybridoma*, 25, 51-59.
2) Maeshima et al., (2006) *J. Cell Sci.* 119, 4442-4451.
This antibody is used in ref.1 and 2.

Data

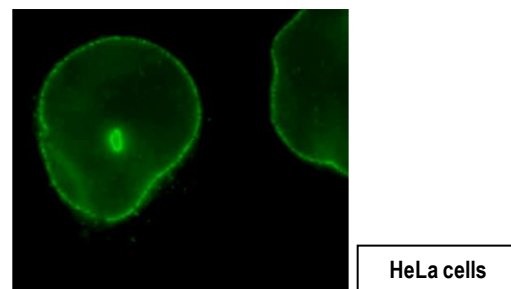


Fig.1 Immunocytochemistry/Immunofluorescence
- Nup62/p62 antibody (8A12)
HeLa cells

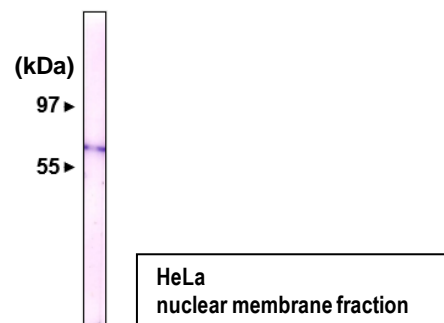


Fig.2 Western blot - Nup62/p62 antibody (8A12)
HeLa cell nuclear membrane fraction