

Anti-Nup62/p62 antibody(Clone No.7E11)

Clone	Cross reactivity	Application notes	Host	Isotype	Storage
7E11	Hu	WB, ICC	Rat	IgG2a, κ	-20°C

BACKGROUND : Nup62/p62 is a major component of the NPC (Nuclear pore complex), has been reported to interact directly with several nuclear transport factors, including importin-beta and NTF2.

Immunogen Recombinant GST-fused N-terminus fragment of human Nup62/p62 (aa 1-300)

Host Rat

Isotype IgG2a, κ

Cross reactivity Human

Other species have not been tested.

Specificity Nup62/p62

Application notes Recommended use

WB, ICC Not tested for other applications.

Recommended dilutions

Western blotting, 1/1000 to 1/5000

Immunocytochemistry, 1/100 to 1/500

Optional dilutions/concentrations should be determined by the end user.

Source Culture Supernatant

Purification Ion-exchange chromatography

Form Liquid

Presentation Purified monoclonal antibody in PBS, 50% Glycerol, 0.05%w/v ProClin300

Concentration 0.5 mg/mL

Volume 200 μ L

Storage Store below -20°C

(below -70°C for prolonged storage)

Aliquot to avoid cycles of freeze/thaw.

References 1) Fukuhara et al., Hybridoma, 2006, 25:51-59.

This antibody is used in ref.1.

Data

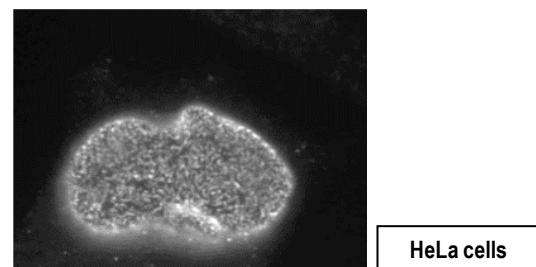


Fig.1 Immunocytochemistry/Immunofluorescence - Nup62/p62 antibody (7E11) HeLa cells

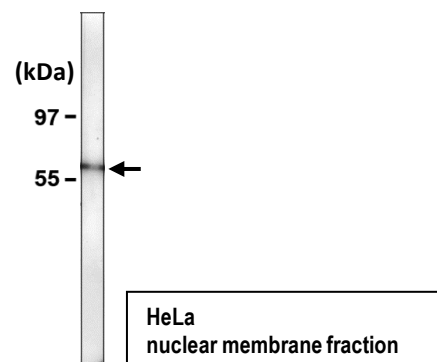


Fig.2 Western blot - Nup62/p62 antibody (7E11) HeLa cell nuclear membrane fraction