

Anti-Nup62/p62 antibody(Clone No.2A11)

Clone	Cross reactivity	Application notes	Host	Isotype	Storage
2A11	Hu, Mk	WB, ICC, IHC	Rat	IgG1, κ	-20°C

BACKGROUND : Nup62/p62 is a major component of the NPC (Nuclear pore complex), has been reported to interact directly with several nuclear transport factors, including importin-beta and NTF2.

Immunogen Recombinant GST-fused N-terminus fragment of human Nup62/p62 (aa 1-300)

Host Rat

Isotype IgG1, κ

Cross reactivity Human, Monkey
(This antibody doesn't recognize mouse Nup62.)

Specificity Nup62/p62

Application notes Recommended use
WB, ICC, IHC Not tested for other applications.
Recommended dilutions
Western blotting, 1/1000 to 1/5000
Immunocytochemistry, 1/100 to 1/500
Immunohistochemistry, 1/100 to 1/500
Optional dilutions/concentrations should be determined by the end user.

Source Culture Supernatant

Purification Ion-exchange chromatography

Form Liquid

Presentation Purified monoclonal antibody in PBS,
50% Glycerol, 0.05%w/v ProClin300

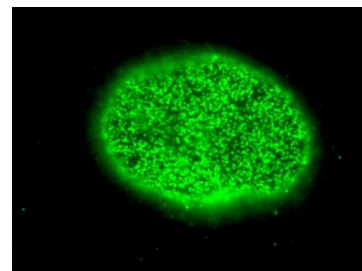
Concentration 1 mg/mL

Volume 100 μ L

Storage Store below -20°C
(below -70°C for prolonged storage)
Aliquot to avoid cycles of freeze/thaw.

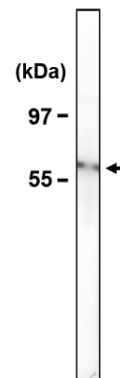
References 1) Fukuhara et al., Hybridoma, 2006, 25:51-59.
2) Maeshima et al., J Cell Sci. 2006 119:4442-4451.
3) Oka et al., Mol. Biol. Cell., 2010, 21:1885-1896.
This antibody is used in ref.1, 2 and 3.

Data



HeLa cells

Fig.1 Immunocytochemistry/Immunofluorescence
- Nup62/p62 antibody (2A11)
HeLa cells



HeLa
nuclear membrane fraction

Fig.2 Western blot - Nup62/p62 antibody (2A11)
HeLa cell nuclear membrane fraction