

Anti-Ran antibody

Clone	Cross reactivity	Application notes	Host	Isotype	Storage
1D6C10	Hu, Mk, Ms, Rat	WB, ICC	Rat	IgG2a, κ	-20°C

BACKGROUND : Ran (ras-related nuclear protein) is a small GTP binding protein belonging to the RAS superfamily that is essential for the translocation of RNA and proteins through the nuclear pore complex. The Ran protein is also involved in control of DNA synthesis and cell cycle progression.

Immunogen Synthetic peptide corresponding to C-terminal 14 aa of human Ran, VAQTTALPDEDDL

Host Rat

Isotype IgG2a, κ

Cross reactivity Human, Monkey, Mouse, Rat
Other species have not been tested.

Specificity Ran

Application notes Recommended use
WB, ICC Not tested for other applications.
Recommended dilutions
Western blotting, 1/1000 to 1/5000
Immunocytochemistry, 1/100 to 1/500
Optional dilutions/concentrations should be determined by the end user.

Source Culture Supernatant

Purification Ion-exchange chromatography

Form Liquid

Presentation Purified monoclonal antibody in PBS,
50% Glycerol, 0.05%w/v ProClin300

Concentration 1 mg/mL

Volume 100 μ L

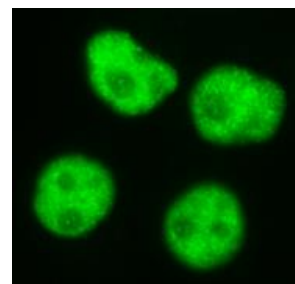
Storage Store below -20°C

(below -70°C for prolonged storage)

Aliquot to avoid cycles of freeze/thaw.

References 1) Güttler and Görlich, (2011) *EMBO J.*, 30, 3457-3474.

Data



HeLa cells

Fig.1 Immunocytochemistry/Immunofluorescence
- Ran antibody (1D6C10)
HeLa cells

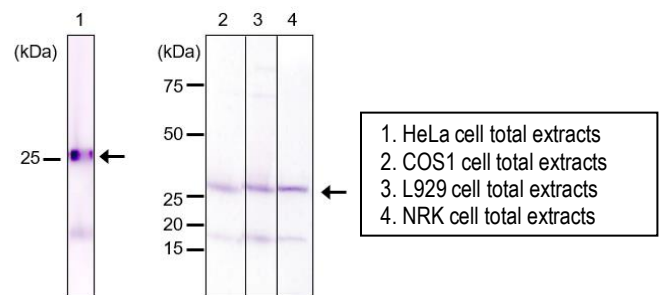


Fig.2 Western blot - Ran antibody (1D6C10)
1.HeLa, 2.COS1(simian), 3.L929(mouse), 4.NRK(rat) cell total extracts