

# Anti-Exportin-5 antibody

Clone	Cross reactivity	Application notes	Host	Isotype	Storage
1D11	Hu	WB, ICC	Rat	IgG2a, $\kappa$	-20°C

**BACKGROUND** : Exportin-5 (XPO5) mediates the nuclear export of proteins bearing a double-stranded RNA binding domain (dsRBD) and double-stranded RNAs (cargos). XPO5 in the nucleus binds cooperatively to the RNA and to the GTPase Ran in its active GTP-bound form.

**Immunogen** Synthetic peptide corresponding to C-terminus region (aa 1152-1166) of human Exportin-5, RLIAGCIGKPLGEQF

**Host** Rat

**Isotype** IgG2a,  $\kappa$

**Cross reactivity** Human

Other species have not been tested.

**Specificity** Exportin-5 (XPO5)

**Application notes** Recommended use

WB, ICC Not tested for other applications.

Recommended dilutions

Western blotting, 1/1000 to 1/5000

Immunocytochemistry, 1/100 to 1/500

Optional dilutions/concentrations should be determined by the end user.

**Source** Culture Supernatant

**Purification** Ion-exchange chromatography

**Form** Liquid

**Presentation** Purified monoclonal antibody in PBS, 50% Glycerol, 0.05%w/v ProClin300

**Concentration** 1 mg/mL

**Volume** 100  $\mu$ L

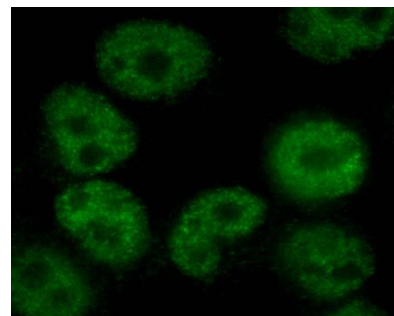
**Storage** Store below -20°C

(below -70°C for prolonged storage)

Aliquot to avoid cycles of freeze/thaw.

**References** 1) Katahira and Yoneda, (2011) *Traffic*, 12, 1468-1474.

## Data



HeLa cells

Fig.1 Immunocytochemistry/Immunofluorescence - Exportin-5 antibody (1D11) HeLa cells

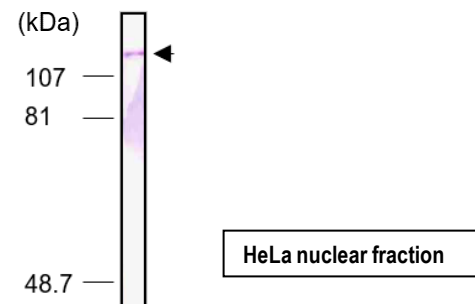


Fig.2 Western blot - Exportin-5 antibody (1D11) HeLa cell nuclear extracts