

Anti-Importin alpha5/NPI-1 antibody

Clone	Cross reactivity	Application notes	Host	Isotype	Storage
1H7	Hu, Ms, Rat	WB	Mouse	IgG2b, κ	-20°C

BACKGROUND : Importin alpha, which mediates the nuclear import of nuclear localization signal (NLS)-containing proteins, is a member of nuclear transport factors. Importin alpha binds directly NLS and functions as an adapter for accessing the importin alpha-dependent import pathway. It has been reported that several isoforms of importin alpha exist in mammals. These importin alpha proteins can be classified into three distinct subfamilies, the Rch1 subfamily (importin alpha1/Rch1), the Qip1 subfamily (importin alpha3/Qip1 and importin alpha4), and the NPI-1 subfamily (importin alpha5/NPI-1 and importin alpha7/S2) based on sequence similarity.

Immunogen Recombinant Flag-human importin alpha5/NPI-1 (full length)

Host Mouse
Isotype IgG2b, κ
Cross reactivity Human, Mouse, Rat
Other species have not been tested.
Specificity Importin -alpha5/NPI-1
Application notes Recommended use
WB
Recommended dilutions
Western blotting, 1/1000 to 1/5000
Optional dilutions/concentrations should be determined
by the end user.

Source Culture Supernatant
Purification Ion-exchange chromatography
Form Liquid
Presentation Purified monoclonal antibody in PBS,
50% Glycerol, 0.05%w/v ProClin300
Concentration 1 mg/mL
Volume 100 μ L
Storage Store below -20°C
(below -70°C for prolonged storage)
Aliquot to avoid cycles of freeze/thaw.

References

Data

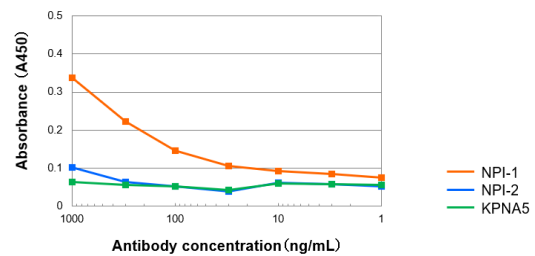


Fig.1 ELISA analysis - importin alpha5/NPI-1 antibody (1H7)

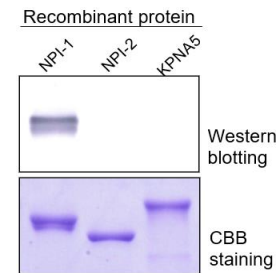


Fig.2 Western blot - importin alpha5/NPI-1 antibody (1H7)
Recombinant protein (NPI-1, NPI-2, KPNA5)

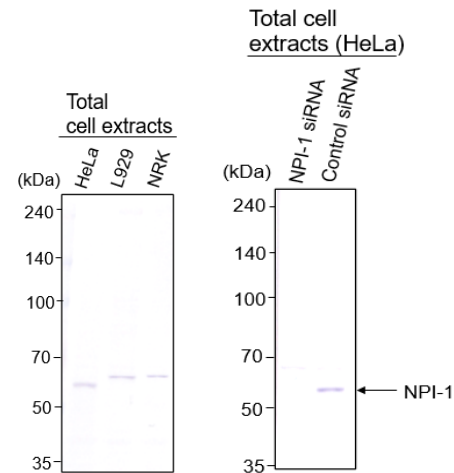


Fig.3 Western blot - importin alpha5/NPI-1 antibody (1H7)
HeLa cell, L929 cell, NRK cell total extracts