

# Anti-Importin alpha5/7/NPI-1 antibody

Clone	Cross reactivity	Application notes	Host	Isotype	Storage
2D9	Hu, Ms, Rat, Mk, Hms, Bov	WB, ICC	Rat	IgG2a, $\lambda$	-20°C

**BACKGROUND** : Importin alpha, which mediates the nuclear import of nuclear localization signal (NLS)-containing proteins, is a member of nuclear transport factors. Importin alpha binds directly NLS and functions as an adapter for accessing the importin alpha-dependent import pathway. It has been reported that several isoforms of importin alpha exist in mammals. These importin alpha proteins can be classified into three distinct subfamilies, the Rch1 subfamily (importin alpha1/Rch1), the Qip1 subfamily (importin alpha3/Qip1 and importin alpha4), and the NPI-1 subfamily (importin alpha5/NPI-1 and importin alpha7/S2) based on sequence similarity.

Immunogen Recombinant GST-fused mouse importin alpha7 (full length)

Host Rat  
Isotype IgG2a,  $\lambda$   
Cross reactivity Human, Mouse, Rat, Monkey, hamster, bovine  
Other species have not been tested.  
Specificity Importin -alpha5/7/NPI-1  
Application notes Recommended use  
WB, ICC  
Recommended dilutions  
Western blotting, 1/1000 to 1/5000  
Immunocytochemistry, 1/100 to 1/500  
Optional dilutions/concentrations should be determined  
by the end user.

Source Culture Supernatant  
Purification Ion-exchange chromatography  
Form Liquid  
Presentation Purified monoclonal antibody in PBS,  
50% Glycerol, 0.05%w/v ProClin300  
Concentration 0.5 mg/mL  
Volume 200  $\mu$ L  
Storage Store below -20°C  
(below -70°C for prolonged storage)  
Aliquot to avoid cycles of freeze/thaw.

References 1) Tachibana et al., *Hybridoma* 2008, 27, 285-290.  
This antibody is used in ref.1.

Data

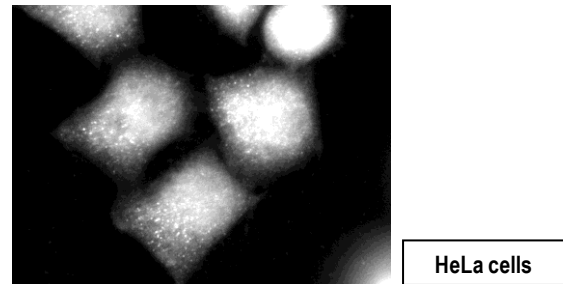


Fig.1 Immunocytochemistry/Immunofluorescence  
- importin alpha5/7/NPI-1 antibody (2D9)  
HeLa cells

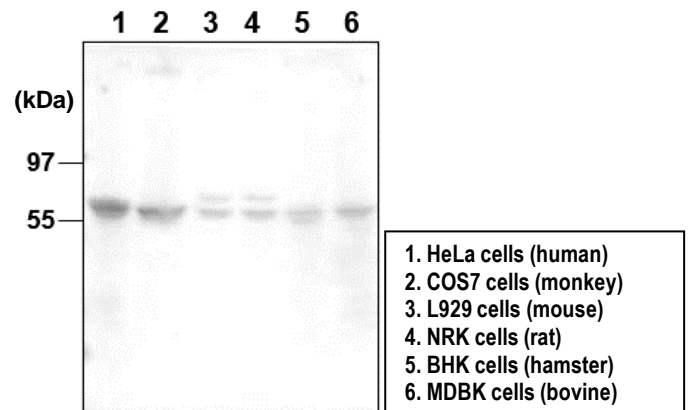


Fig.2 Western blot - importin alpha5/7/NPI-1 antibody (2D9)  
1. HeLa cell, 2. Cos-7 cell, 3. L929 cell, 4. NRK cell, 5. BHK cell,  
6. MDBK cell total extracts