

# Anti-Importin alpha3/Qip1 antibody

Clone	Cross reactivity	Application notes	Host	Isotype	Storage
3D10	Hu, Ms, Rat, Mk, Hms, Bov	WB	Rat	IgG2a, $\kappa$	-20°C

**BACKGROUND** : Importin alpha, which mediates the nuclear import of nuclear localization signal (NLS)-containing proteins, is a member of nuclear transport factors. Importin alpha binds directly NLS and functions as an adapter for accessing the importin alpha-dependent import pathway. It has been reported that several isoforms of importin alpha exist in mammals. These importin alpha proteins can be classified into three distinct subfamilies, the Rch1 subfamily (importin alpha1/Rch1), the Qip1 subfamily (importin alpha3/Qip1 and importin alpha4), and the NPI-1 subfamily (importin alpha5/NPI-1 and importin alpha7/S2) based on sequence similarity.

Immunogen	Recombinant GST-fused mouse importin alpha3/Qip1 (full length)
Host	Rat
Isotype	IgG2a, $\kappa$
Cross reactivity	Human, Mouse, Rat, Monkey, hamster, bovine Other species have not been tested.
Specificity	Importin alpha3/Qip1
Application notes	Recommended use WB Recommended dilutions Western blotting, 1/1000 to 1/5000 Optional dilutions/concentrations should be determined by the end user.

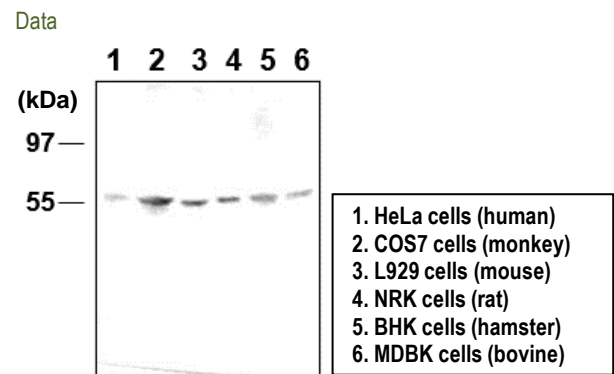


Fig.1 Western blot - Importin alpha3/Qip1 antibody (3D10)  
1. HeLa cell, 2. Cos-7 cell, 3. L929 cell, 4. NRK cell, 5. BHK cell, 6. MDBK cell total extracts

Source	Culture Supernatant
Purification	Ion-exchange chromatography
Form	Liquid
Presentation	Purified monoclonal antibody in PBS, 50% Glycerol, 0.05%w/v ProClin300
Concentration	0.5 mg/mL
Volume	200 $\mu$ L
Storage	Store below -20°C (below -70°C for prolonged storage) Aliquot to avoid cycles of freeze/thaw.

References 1) Sakaguchi et al., *Hybrid. Hybridomics* . 2003 22, 397-400.  
2) Yasuhara et al., *Nat. Cell Biol.* 2007 9, 72-79.  
This antibody is used in ref.1 and 2.