

Anti-Importin alpha1/Rch1 antibody

Clone	Cross reactivity	Application notes	Host	Isotype	Storage
1A6	Hu, Ms, Rat	WB, ICC	Rat	IgG2a, κ	-20°C

BACKGROUND : Importin alpha, which mediates the nuclear import of nuclear localization signal (NLS)-containing proteins, is a member of nuclear transport factors. Importin alpha binds directly NLS and functions as an adapter for accessing the importin alpha-dependent import pathway. It has been reported that several isoforms of importin alpha exist in mammals. These importin alpha proteins can be classified into three distinct subfamilies, the Rch1 subfamily (importin alpha1/Rch1), the Qip1 subfamily (importin alpha3/Qip1 and importin alpha4), and the NPI-1 subfamily (importin alpha5/NPI-1 and importin alpha7/S2) based on sequence similarity.

Immunogen Recombinant GST-fused human importin alpha1/Rch1 (full length)

Host Rat

Isotype IgG2a, κ

Cross reactivity Human, Mouse, Rat
Other species have not been tested.

Specificity Importin alpha1/Rch1

Application notes Recommended use
WB, ICC
Recommended dilutions
Western blotting, 1/1000 to 1/5000
Immunocytochemistry, 1/100 to 1/500
Optional dilutions/concentrations should be determined by the end user.

Source Culture Supernatant

Purification Ion-exchange chromatography

Form Liquid

Presentation Purified monoclonal antibody in PBS,
50% Glycerol, 0.05%w/v ProClin300

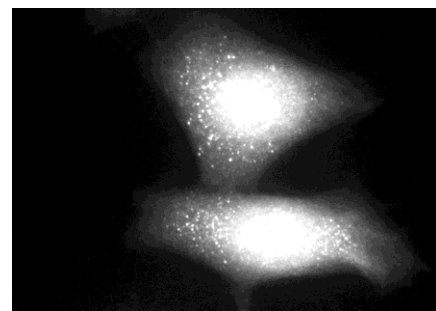
Concentration 0.5 mg/mL

Volume 200 μ L

Storage Store below -20°C
(below -70°C for prolonged storage)
Aliquot to avoid cycles of freeze/thaw.

References 1) Kamikubo et al., *Hybrid. Hybridomics* . 2004 23, 301-304.
2) Mohmood et al., *Mol.Biol.Cell.* , 2011, 22, 3715-3724.
This antibody is used in ref.1 and 2.

Data



HeLa cells

Fig.1 Immunocytochemistry/Immunofluorescence - importin alpha1/Rch1 antibody (1A6)
HeLa cells

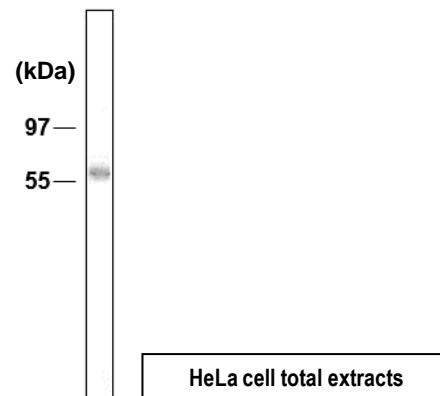


Fig.2 Western blot - Importin alpha1/Rch1 antibody (1A6)
HeLa cell total extracts