

Anti-RNA polymerase 2, CTD Ser2ph/Ser5ph antibody

Clone	Cross reactivity	Application notes	Host	Isotype	Storage
1A12G10	Mammals	WB, ICC, ChIP	Mouse	IgG1, κ	-20°C

BACKGROUND : RNA polymerase II (RNAPII) transcribes all protein-coding genes and many non-coding genes, and the activity of RNAPII correlates with the phosphorylation state of RPB1, the large catalytic subunit of RNAPII. RPB1 has an unusual C-terminal domain (CTD) that consists of repeats of the heptapeptide consensus sequence N-Tyr1-Ser2-Pro3-Thr4-Ser5-Pro6-Ser7-C, of which there are 52 copies in mammals. The amino acids in these repeats are potential targets for modification, such as phosphorylation and glycosylation.

Immunogen Synthetic peptide corresponding to Ser2ph/Ser5ph Peptide of RNA Pol II CTD repeat, SPTSPSY(phS)PT(phS)PSYSPTSPS

Host Mouse

Isotype IgG1, κ

Cross reactivity Mammals

Specificity RNA polymerase 2, CTD Ser2ph/Ser5ph

Application notes Recommended use
ELISA, WB, ICC, ChIP Not tested for other applications.
Recommended dilutions
Western blotting, 1/1000 to 1/5000
Immunocytochemistry, 1/100 to 1/500

Optional dilutions/concentrations should be determined by the end user.

Source Culture Supernatant

Purification Ion-exchange chromatography

Form Liquid

Presentation Purified monoclonal antibody in PBS, 50% Glycerol, 0.05%w/v ProClin300

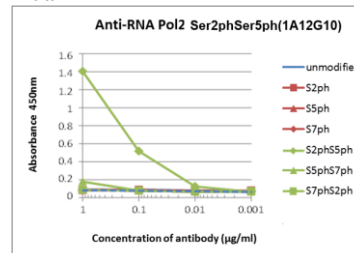
Concentration 1 mg/mL

Volume 100 μ L

Storage Store below -20°C
(below -70°C for prolonged storage)
Aliquot to avoid cycles of freeze/thaw.

References

Data



unmodified SPTSPS YS PTS PS YSPTSPS
S2ph SPTSPS YSphPTS PS YSPTSPS
S5ph SPTSPS YS PTSphPS YSPTSPS
S7ph SPTSPS YS PTS PSpYPTSPS
S2phS5ph SPTSPS YSphPTSphPS YSPTSPS
S5phS7ph SPTSPS YS PTSphPSphYPTSPS
S7phS2ph SPTSPSphYSphPTS PS YSPTSPS

Fig.1 ELISA analysis

- RNA polymerase 2, CTD Ser2ph/Ser5ph antibody (1A12G10)

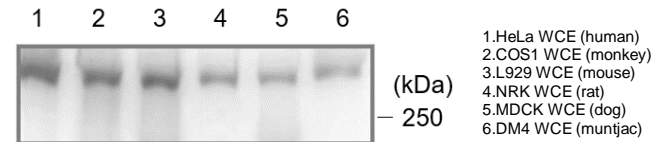


Fig.2 Western blot

- RNA polymerase 2, CTD Ser2ph/Ser5ph antibody (1A12G10)
the mammalian cell total extracts

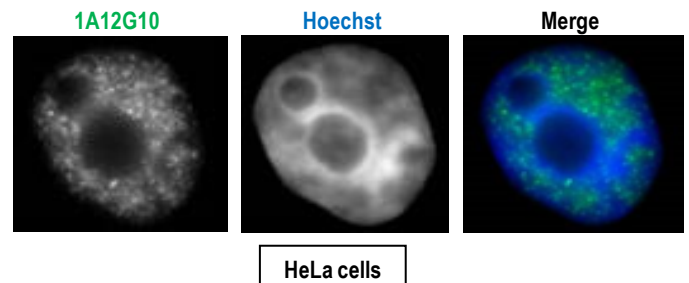


Fig.3 Immunocytochemistry/Immunofluorescence

- RNA polymerase 2, CTD Ser2ph/Ser5ph antibody (1A12G10)
HeLa cells