

# Anti-Histone H3 S10ph antibody

Clone	Cross reactivity	Application notes	Host	Isotype	Storage
6G8B7	Mammals	WB, ICC, ChIP	Rat	IgG2a, $\kappa$	-20°C

**BACKGROUND** : Post-translation modifications of histones modulate the accessibility and transcriptional competence of specific chromatin regions within the eukaryotic genome. Phosphorylation of histone H3 is unique in the sense that it associates on one hand with open chromatin during gene activation and marks on the other hand highly condensed chromatin during mitosis.

**Immunogen** Synthetic peptide corresponding to N-terminal Ser10ph (aa 1-19) of human Histone H3, ARTKQTARK(phS)TGGKAPRKQ

**Host** Rat

**Isotype** IgG2a,  $\kappa$

**Cross reactivity** Mammals

**Specificity** Histone H3 S10ph

**Application notes** Recommended use  
ELISA, WB, ICC, ChIP Not tested for other applications.  
Recommended dilutions  
Western blotting, 1/2500  
Immunocytochemistry, 1/5000

Optional dilutions/concentrations should be determined by the end user.

**Source** Culture Supernatant

**Purification** Ion-exchange chromatography

**Form** Liquid

**Presentation** Purified monoclonal antibody in PBS, 50% Glycerol, 0.05%w/v ProClin300

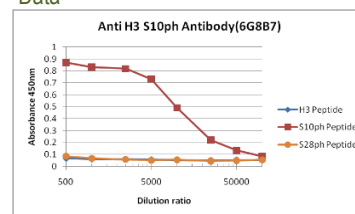
**Concentration** 1 mg/mL

**Volume** 100  $\mu$ L

**Storage** Store below -20°C  
(below -70°C for prolonged storage)  
Aliquot to avoid cycles of freeze/thaw.

**References** 1) Strahl and Allis, (2000) Nature 403, 41-45.  
2) Monoclon Antib Immunodiagn Immunother. 2013, 32, 119-24  
This antibody is used in ref.2.

## Data



H3 peptide	1	ARTKQTARKS	TGGKAPRKQ	19
H3 S10ph peptide	1	ARTKQTARKS	phTGGKAPRKQ	19
H3 S28ph peptide	21	ATKAARKS	phAPATGGVKKPH	39

Fig.1 ELISA analysis  
- Histone H3 S10ph antibody (6G8B7)

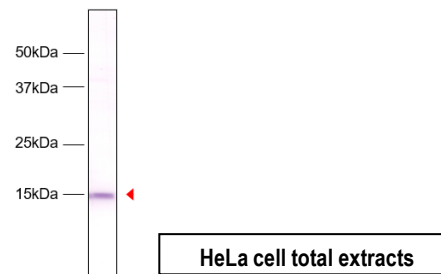


Fig.2 Western blot  
- Histone H3 S10ph antibody (6G8B7)  
HeLa cell total extracts

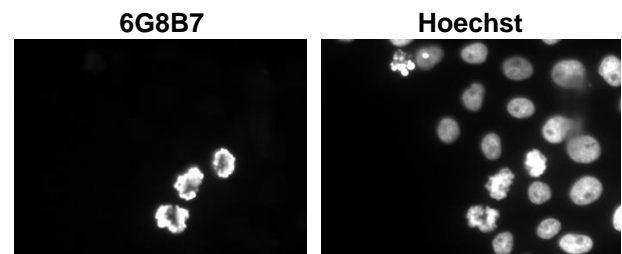


Fig.3 Immunocytochemistry/Immunofluorescence  
- Histone H3 S10ph antibody (6G8B7)  
HeLa cells