

DreamCurler

Guide to Perfect Curls



Important Safety Instructions:



1. Keep away from water
2. Always store at a safe place and keep away from children
3. Always use the device only for its intended use, as described in this manual.
4. Only use a 5 V/2 A charging adapter and the supplied USB cable to charge device
5. Do not use device on wet hair
6. Do not leave the device unattended while switched on
7. Charge device overnight before initial use

General Information:

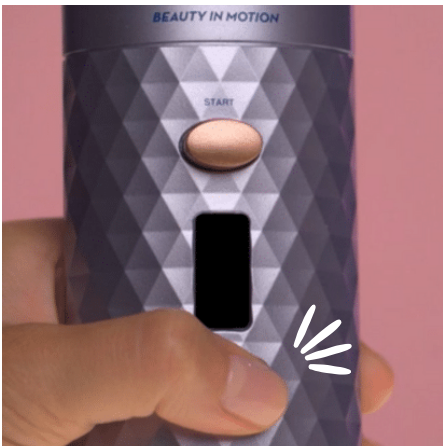
1. Device is fully charged after 3,5 hours.
2. Fully charged the device will work for 40 - 60 minutes based on the heat and duration settings you have selected.

How to use DreamCurler

Charge device overnight before first use, even if the battery is indicated as fully charged!



Step 1:
Comb your hair very thoroughly to remove all knots.

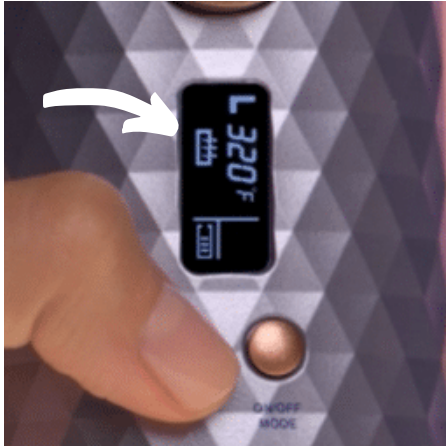


Step 2:
Press right ▲ button for 2 seconds to turn on.



Step 3:
Press ▲ button to select between modes: **temperature, curl direction, time.**

Press left ■ button to **adjust settings** within selected mode.
(e.g. temperature)



Step 4:

Wait until you hear **two beeps** and heater icon **stops flashing**. The curler is now ready to use.




Step 5:

Hold the curler so that the opening points **away from your face**. Take a **1" to 1 ½" hair strand** and place it to the opening of the chamber.




Step 6:

Press and hold the big  button and wait until your hair has been fully winded up. **Hold button** while curler beeps several times. Release the button after hearing **two consecutive beeps sounds**.



Step 7:

Pull curler downwards to release curl. **Repeat steps** for the rest of your hair. Work in small sections.

Press  button for 2 seconds to **turn off**.

Tips for Dream Curls

Style soft waves or strong curls



You will get light waves at **lower temperatures** and **shorter duration**.

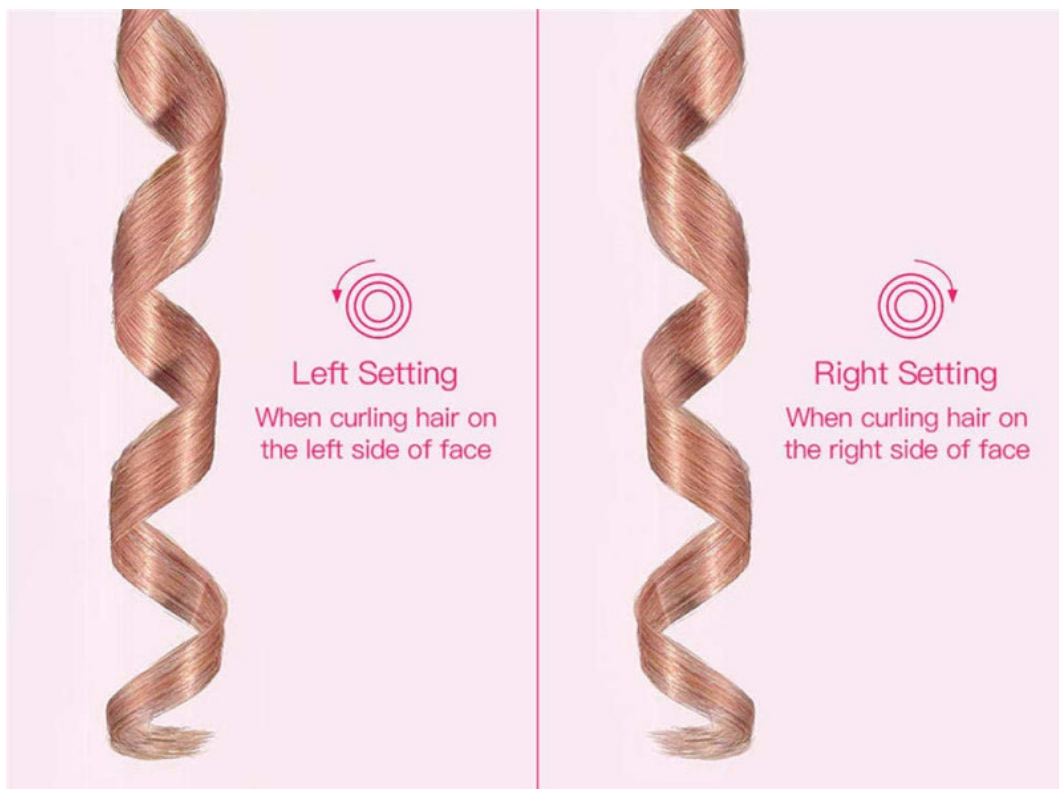
Eg. 320F° and 6 Seconds



Style stronger curls at **higher temperatures** and **longer duration**.

Eg. 400F° and 12 Seconds

Choose left or right curling direction to frame your face perfectly.



Troubleshooting

1. Problem: Curler does not charge.

If your rechargeable curler does not seem to charge, follow these steps before returning it for repair:

1. If using a USB power adapter in an electrical outlet, check to see if the outlet is working by plugging in another appliance to test it.
2. Make sure to use a 5 V/2 A charging adapter
3. Make sure unit is completely cool before charging

2. Problem: Hair gets stuck.

1. If your hair gets stuck, please press the button to release your hair from the curler.
2. Comb your hair thoroughly and remove any knots.
3. Now insert a thinner strand into the curler and try again.

Also make sure to hold the curler with the opening facing **away** from your face.