



**INSTRUCTIONS FOR:
ABARTH 500 INCL USA MODEL
TMC ORIGINAL SEAT LOWERING BRACKETS**

- 1) Cut the 8 original buttons with the drill.

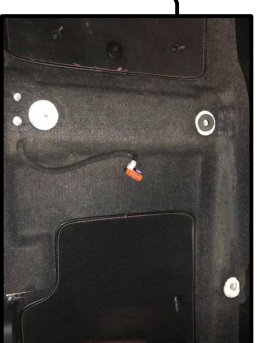
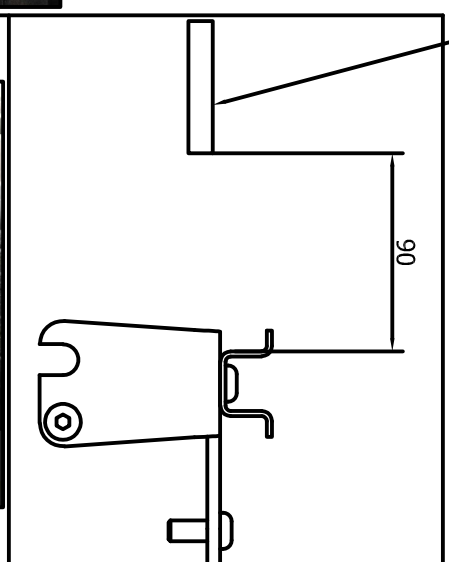
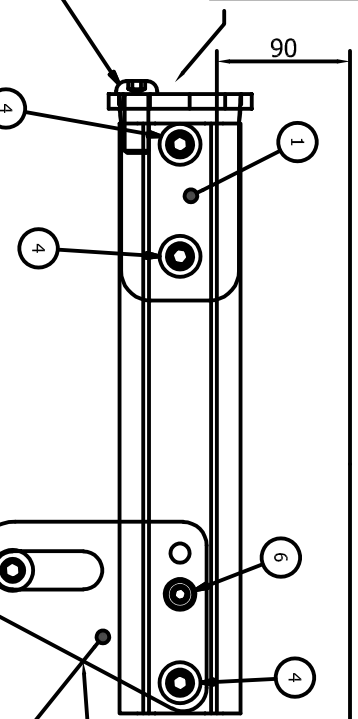
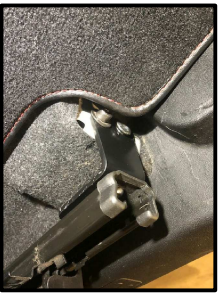


- 2) Fit the new brackets to the seat with the appropriate screws as shown in the attached DIAGRAM.
- 3) Place the modified seat in the passenger compartment. We suggest starting the 90 ° rear plate with the tightening of the floor screws. Follow the others
- 4) Keep the distance of 90mm from the heel block as shown in the attached picture and diagram.

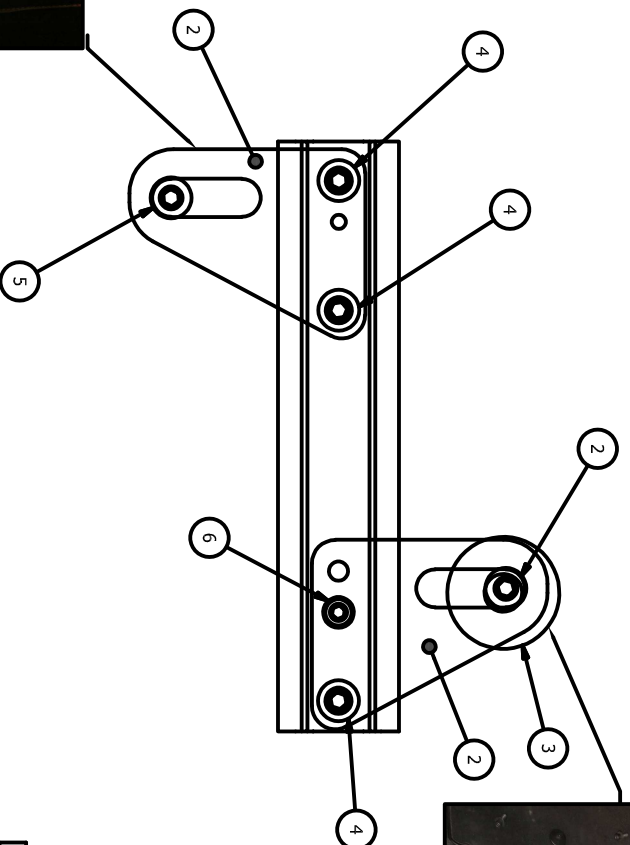


PORTA - DOOR

TENERE A 90mm DAL BATTICCO COME DA FOTO
 KEEP 90mm FROM PLASTIC AS FROM PHOTO
 MANTENGA 90mm DEL PLÁSTICO COMO DE LA FOTO



R E T R O - R E A R



CENTRAL TUNNEL

Pos.	Codice	Descrizione	Materiale	Peso	Q.tà
6	1109AE43G	VITE A BRUGOLA M6x10 FORNITA NEL KIT	INOX	0 kg	2
5	1109AC065Z	VITE FIAT ORIGINALE	INOX	0 kg	4
4	1109AE063G	VITE A BRUGOLA M6x10 FORNITA NEL KIT	ORIGINALE	0 kg	6
3	ST.M.000055	DISTANZIALE RRS LOW KIT 1	ACCIAIO	0 kg	1
2	ST.M.000054	STAFFA RRS LOW KIT 2	ACCIAIO	0,1 kg	3
1	ST.M.000052	STAFFA RRS LOW KIT 1	ACCIAIO	0,2 kg	1

Elenco parti