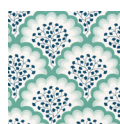


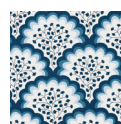
# HYGGE & WEST



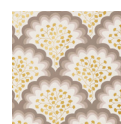
## AVAILABLE COLORWAYS



Laurel  
TF-001



Navy  
TF-002



Fawn  
TF-003



Coral  
TF-004

TILTON FENWICK

## Angelina

Inspired by Manueline architecture, the addition of graduated color and a floral motif softens and modernizes the repeating arches of this scallop pattern.

### ROLL SIZE

27 in wide by 30 ft long (double roll)

### VERTICAL REPEAT

36 in

### MATCH

Straight across

### TYPE

Hand screen printed coated paper  
(paste required)

### FINISH

Pre-trimmed

### FIRE RATING

Class A

### DETAILS

Highly durable and fade resistant

Made in the USA

If you have any questions, please contact us at [support@hyggeandwest.com](mailto:support@hyggeandwest.com).