



Test Point Hoses

THERMOPLASTIC TUBING AND HOSES
MADE IN ITALY

ZEC Solutions for Measuring Systems

TS7/TS7-PA Series

MICRO BORE HOSES

*Measuring Systems & Mini High Pressure Hydraulic Equipment*

TS7/TS7-PA MICRO BORE HOSES



Caratteristiche principali

- Applicazioni oleodinamiche ad alta pressione
- Leggero
- Elevata flessibilità
- Resistente al kinking

Main Features

- High pressure hydraulic applications
- Lightweight
- High flexibility
- Kinking resistant

Caratteristiche tecniche

• Caratteristiche tecnico-costruttive:

Anima interna in poliestere (o poliammide* **), rinforzo con treccia singola in poliestere e rivestimento esterno in poliuretano (o poliammide*) nero lucido, forato per convogliamento aria e gas compatibili.

Su richiesta rivestimento in poliuretano opaco.

• Temperature di utilizzo:

Da -40°C (-40°F) a +100°C (+212°F).

In caso di acqua, o fluidi a base acquosa, la temperatura max. di lavoro è di +70°C (+158°F).

Temperature superiori a +80°C possono ridurre la durata di vita utile del tubo.

• Valore max. di vuoto:

pressione assoluta 0.93bar; 700 mmHg.

(pressione assoluta 13.5 psi; 27.5 inchHg).

• Variazione max. di lunghezza alla pressione di esercizio:

Da -1.5% a +1.5%

• Note:

La marcatura standard indica solo il fattore di sicurezza 1:3.

Technical Features

• Technical-constructive Features:

Inner core of polyester (or polyamide* **), single braided polyester reinforcement and outer covering of shiny black polyurethane (or polyamide*), pin-pricked for conveying air and compatible gases. Matte polyurethane cover available on request.

• Working Temperatures:

From -40°C (-40°F) to +100°C (+212°F).

Max. working temperature with water or water-based fluids is +70°C (+158°F).

Temperatures higher than +80°C may reduce hose lifespan.

• Max. Vacuum Value:

absolute pressure 0.93 bar; 700 mmHg.

(absolute pressure 13.5 psi; 27.5 inchHg).

• Max. Length Variation at Working Pressure:

From -1.5% to +1.5%

• Note:

Standard branding specifies 1:3 SF only.



Test Point Hoses



THERMOPLASTIC TUBING AND HOSES
MADE IN ITALY

ZEC Solutions for Measuring Systems

TS7/TS7-PA Series MICRO BORE HOSES



Scheda tecnica - Data Sheet



CODE	mm	inch	DN	mm	inch	bar	psi	bar	psi	bar	psi	mm	inch	g/m	lbs/ft	FERRULE
TS750210100	2.1	0.0827	2	5.0	0.197	300	4350	400	5800	1200	17400	20	0.787	21	0.0141	BPTS50
TS750213100PA*	2.1	0.0827	2	5.0	0.197	300	4350	400	5800	1200	17400	20	0.787	19	0.0128	BPTS50
TS750220100PA**	2.2	0.0866	2	5.0	0.197	187	2710	250	3630	750	10880	20	0.787	19	0.0128	BPTS50
TS756250100	2.5	0.0984	2	5.6	0.220	187	2710	250	3630	750	10880	20	0.787	24	0.0161	BPTS55
TS756250100PA**	2.5	0.0984	2	5.6	0.220	187	2710	250	3630	750	10880	20	0.787	24	0.0161	BPTS55

* Anima e copertura in PA
** Anima in PA

* PA inner core and cover
** PA inner core



Test Point Hoses

THERMOPLASTIC TUBING AND HOSES
MADE IN ITALY

ZEC Solutions for Measuring Systems

TS8/TS8-PA Series MICRO BORE HOSES



Measuring Systems & Mini High Pressure Hydraulic Equipment

TS8/TS8-PA MICRO BORE HOSES



Caratteristiche principali

- Applicazioni oleodinamiche ad alta pressione
- Leggero
- Elevata flessibilità
- Resistente al kinking

Main Features

- High pressure hydraulic applications
- Lightweight
- High flexibility
- Kinking resistant

Caratteristiche tecniche

- **Caratteristiche tecnico-costruttive:**
Anima interna in poliestere (o poliammide* **), rinforzo in treccia singola di fibra aramidica e rivestimento esterno in poliuretano (o poliammide*) nero lucido, forato per convogliamento aria e gas compatibili. Su richiesta rivestimento in poliuretano opaco.
- **Temperature di utilizzo:**
Da -40°C (-40°F) a +100°C (+212°F).
In caso di acqua, o fluidi a base acquosa, la temperatura max. di lavoro è di +70°C (+158°F). Temperature superiori a +80°C possono ridurre la durata di vita utile del tubo.
- **Valore max. di vuoto:**
pressione assoluta 0.93bar; 700 mmHg.
(pressione assoluta 13.5 psi; 27.5 inchHg).
- **Variation max. di lunghezza alla pressione di esercizio:**
Da -1.5% a +1.5%
- **Specifiche:**
Il tubo DN2 con anima e rivestimento esterno di PA (rif. TS850213100PA) ha superato il test impulsi ad 1 milione di cicli.
- **Note:**
La marcatura standard indica solo il fattore di sicurezza 1:3.

Technical Features

- **Technical-constructive Features:**
Inner core of polyester (or polyamide **), single braided aramid reinforcement and outer covering of shiny black polyurethane (or polyamide*), pin-pricked for conveying air and compatible gases. Matte polyurethane cover available on request.*
- **Working Temperatures:**
*From -40°C (-40°F) to +100°C (+212°F).
Max. working temperature with water or water-based fluids is +70°C (+158°F).
Temperatures higher than +80°C may reduce hose lifespan.*
- **Max. Vacuum Value:**
*absolute pressure 0.93 bar; 700 mmHg.
(absolute pressure 13.5 psi; 27.5 inchHg).*
- **Max. Length Variation at Working Pressure:**
-1.5% to +1.5%
- **Specifications:**
DN2 hose with inner core and PA cover (ref. TS850213100PA) has passed impulse test at 1 mio cycles.
- **Note:**
Standard branding specifies 1:3 SF only.



Test Point Hoses



THERMOPLASTIC TUBING AND HOSES
MADE IN ITALY

ZEC Solutions for Measuring Systems

TS8/TS8-PA Series MICRO BORE HOSES



Scheda tecnica - Data Sheet



CODE	mm	inch	DN	mm	inch	bar	psi	bar	psi	bar	psi	mm	inch	g/m	lbs/ft	FERRULE
TS850210100	2.1	0.0827	2	5.0	0.197	472	7250	630	9660	1890	29010	20	0.787	19	0.0128	BPTS50
TS850210100PA*	2.1	0.0827	2	5.0	0.197	472	7250	630	9660	1890	29010	20	0.787	18	0.0121	BPTS50
TS850213100PA**	2.1	0.0827	2	5.0	0.197	500	7250	666	9660	2000	29010	20	0.787	17	0.0114	BPTS50
TS855210100	2.1	0.0827	2	5.5	0.216	472	6850	630	9140	1890	27410	20	0.787	23	0.0154	BPTS55
TS855260100	2.6	0.1024	3	5.5	0.216	472	7250	630	9660	1890	29010	20	0.787	23	0.0154	BPTS5525
TS864290100PA*	2.9	0.1142	3	6.4	0.252	500	7250	666	9660	2000	29010	35	1.378	28	0.0188	BPTSM65
TS864293100PA**	2.9	0.1142	3	6.4	0.252	500	7250	666	9660	2000	29010	35	1.378	26	0.0178	BPTSM65
TS855300100PA*	3.0	0.1181	3	5.5	0.216	472	6850	630	9140	1890	27410	20	0.787	20.4	0.0137	BPTS55
TS860300100	3.0	0.1181	3	6.0	0.236	400	5800	533	7730	1600	23210	30	1.181	26	0.0178	BPTS60
TS8840100	4.0	0.1575	4	8.0	0.315	412	5970	550	7980	1650	23930	35	1.378	44	0.0296	BP480L5
TS880410100PA*	4.1	0.1614	4	8.0	0.315	500	7250	666	9660	2000	29010	40	1.575	38	0.0255	BP480L5
TS880413100PA**	4.1	0.1614	4	8.0	0.315	500	7250	666	9660	2000	29010	40	1.575	36	0.0242	BP480L5

* Anima e copertura in PA ** Anima in PA

* PA inner core and cover ** PA inner core

ZEC Solutions for Measuring Systems and Mini High Pressure Hydraulic Equipment

ZEC offers a dedicated range of thermoplastic micro bore hoses designed for in line pressure testing and high pressure hydraulic use, suitable for the conduction of hydraulic fluids and gas transfer.

TECHNICAL FEATURES

- Compact
- Lightweight
- Very flexible and kinking resistant

APPLICATIONS



HYDRAULIC BIKE BRAKES



HYDRAULIC PRESSURE TEST SYSTEMS



AUTOMOTIVE ROOF OPENING SYSTEMS



MINI HIGH PRESSURE HYDRAULIC EQUIPMENT

CERTIFICATIONS All ZEC hoses are manufactured in conformity to **European Regulation EU 1907/2006 "REACH"** and **European Directive EU 2011/65 "RoHS"**.

QUALITY The certified **ISO 9001:2015 ZEC** quality system ensures a continuous and constant control of the production process, guaranteeing compliance with Good Manufacturing Practices.



Test Point Hoses

ZEC Solutions for Measuring Systems

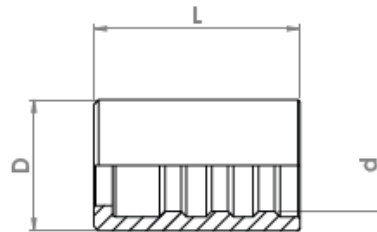
Fittings for TS7/TS8 Series MICRO BORE HOSES

THERMOPLASTIC TUBING AND HOSES
MADE IN ITALY

BOCCOLE A PRESSARE PER TUBI SERIE TS7-TS8 / SWAGE FERRULES FOR TS7-TS8 SERIES HOSES

BOCCOLA A PRESSARE SERIE TEST
SWAGE FERRULE TEST SERIES

Tipo Type	Materiale Material	Finitura superficiale Surface Finishing
TS	Acciaio AVP Carbon Steel	Zincatura trivalente Zinc Plating



Codice Part Number	Diametro tubo Hose Size			Dimensioni Dimensions (mm)			Tipo di Inserto Tail Type
	Inch	mm	size	d	D	L	
BPTS50	1/12" DN2	2.1	-	5.2	8	14	TS
BPTS55	1/12" DN2	2.1	-	5.7	8	15	TS
BPTS5525	1/10"	2.6	-	5.6	8	14	TS
BPTS60	1/8"	3.0	02	6.3	9	15	TS
BP480L5	5/32"	4.0	02.5	8.5	12	20	0



Test Point Hoses



THERMOPLASTIC TUBING AND HOSES
MADE IN ITALY

ZEC Solutions for Measuring Systems



Fittings for TS7/TS8 Series MICRO BORE HOSES

Swage Fittings for TS7/TS8 Hoses

	MASCHIO BSPP SEDE PIANA BSPP MALE FLAT SEAT	8		FEMMINA METRICA 90° CON CONO / O-RING 24° SERIE LEGGERA DKOL METRIC FEMALE 90° WITH 24° TAPER / O-RING LIGHT DKOL SERIES	12
	MASCHIO NPT NPT MALE	8		FEMMINA METRICA CON CONO / O-RING 24° SERIE PESANTE DKOS METRIC FEMALE WITH 24° TAPER / O-RING HEAVY DKOS SERIES	13
	FEMMINA GIREVOLE SEDE PIANA CON O-RING PER MANOMETRO SWIVEL FEMALE FLAT SEAT WITH O-RING FOR PRESSURE GAUGE	9		FEMMINA METRICA 90° CON CONO / O-RING 24° SERIE PESANTE DKOS METRIC FEMALE 90° WITH 24° TAPER / O-RING HEAVY DKOS SERIES	13
	FEMMINA 90° GIREVOLE SEDE PIANA CON O-RING PER MANOMETRO SWIVEL 90° FEMALE FLAT SEAT WITH O-RING FOR PRESSURE GAUGE	9		RACCORDO OCCHIO BANJO FITTING	14
	FEMMINA CON SVASATURA CONICA 60° FEMALE WITH 60° CONICAL BORE	10		BULLONE FORATO BORED BOLT	14
	FEMMINA BSPP 90° CON SVASATURA CONICA 60° BSPP 90° FEMALE WITH 60° CONICAL BORE	10		FEMMINA ORFS O-RING FACE SEAL ORFS FEMALE O-RING FACE SEAL	15
	FEMMINA JIC SVASATURA CONICA 74° JIC FEMALE 90° WITH 74° CONICAL BORE	11		FEMMINA 90° ORFS O-RING FACE SEAL 90° ORFS FEMALE O-RING FACE SEAL	15
	FEMMINA JIC 90° CON SVASATURA CONICA 74° JIC FEMALE 90° WITH 74° CONICAL BORE	11		FEMMINA GIREVOLE A SPINA PER RACCORDO DI CONTROLLO CON ZIGRINATURA KNURLED SWIVEL PIN FEMALE TEST COUPLING FITTING	16
	FEMMINA METRICA CON CONO/ O-RING 24° SERIE LEGGERA DKOL METRIC FEMALE WITH 24° TAPER / O-RING LIGHT DKOL SERIES	12		FEMMINA GIREVOLE A SPINA PER RACCORDO DI CONTROLLO CON ESAGONO SWIVEL PIN FEMALE TEST COUPLING FITTING WITH HEXAGON	16



Test Point Hoses

ZEC Solutions for Measuring Systems



THERMOPLASTIC TUBING AND HOSES
MADE IN ITALY

Fittings for TS7/TS8 Series MICRO BORE HOSES



Swage Fittings for TS7/TS8 Hoses

	CODOLO LISCIO DIRITTO STRAIGHT STANDPIPE	17		MINIPRESA M16X2 FEMMINA INTERMEDIA - TENUTA CEL-S 24° TEST COUPLING M16X2 INTERMEDIATE FEMALE - CEL-S 24° SEALING	20
	CODOLO LISCIO A 90° ELBOW 90° STANDPIPE	17		MINIPRESA M16X2 MASCHIO FILETTATURA CONICA - TENUTA SUL FILETTO TEST COUPLING M16X2 MALE TAPER THREAD - THREAD SEALING	21
	CODOLO LISCIO A 45° ELBOW 45° STANDPIPE	18		MINIPRESA M16X2 MASCHIO FILETTATURA CILINDRICA - TENUTA O-RING RADIALE TEST COUPLING M16X2 MALE PARALLEL THREAD - RADIAL O-RING SEALING	21
	CAPPUCCIO PARAPOLVERE DUST PROTECTION CAP	18		MINIPRESA M16X2 CODOLO LISCIO TEST COUPLING M16X2 STANDPIPE	22
	MINIPRESA M16X2 MASCHIO FILETTATURA CILINDRICA - TENUTA O-RING SOTTOTESTA TEST COUPLING M16X2 MALE PARALLEL THREAD - UNDER HEAD O-RING SEALING	19		NIPLES PER COLLEGAMENTO MANOMETRO M16X2 NIPPLE FOR PRESSURE GAUGE CONNECTION M16X2	22
	MINIPRESA M16X2 FEMMINA - TENUTA DKO 24° O-RING TEST COUPLING M16X2 FEMALE - DKO 24° O-RING SEALING	19			



Test Point Hoses

ZEC Solutions for Measuring Systems



THERMOPLASTIC TUBING AND HOSES
MADE IN ITALY

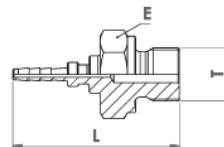
Fittings for TS7/TS8 Series MICRO BORE HOSES



Swage Fittings for TS7/TS8 Hoses

MASCHIO BSPP SEDE PIANA
BSPP MALE FLAT SEAT

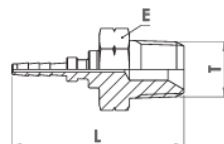
Materiale Material	Finitura superficiale Surface finishing
Acciaio AVP Carbon Steel	Zincatura trivalente Zinc Plating



Codice Part Number	Diametro tubo Hose Size			Filetto Thread	Dimensioni Dimensions (mm)	
	Inch	mm	size		L	E
RTSMD18	1/12"	2.1	-	1/8"-28	30	13
RTSMD14	1/12"	2.1	-	1/4"-19	36	19
RPMD18DN3	1/8"	3.0	02	1/8"-28	34	14
RPMD14DN3	1/8"	3.0	02	1/4"-19	39	19
RPMD1848	5/32"	4.0	02.5	1/8"-28	34	14
RPMD1448	5/32"	4.0	02.5	1/4"-19	39	19

MASCHIO NPT
NPT MALE

Materiale Material	Finitura superficiale Surface Finishing
Acciaio AVP Carbon Steel	Zincatura trivalente Zinc Plating



Codice Part Number	Diametro tubo Hose Size			Filetto Thread	Dimensioni Dimensions (mm)	
	Inch	mm	size		L	E
RTSMD18NPT	1/12"	2.1	-	1/8"-27	32	13
RTSMD14NPT	1/12"	2.1	-	1/4"-18	36	17
RPMD18NPTDN3	1/8"	3.0	02	1/8"-27	33	12
RPMD14NPTDN3	1/8"	3.0	02	1/4"-18	38	17
RPMD18NPT48	5/32"	4.0	02.5	1/8"-27	35	12
RPMD14NPT48	5/32"	4.0	02.5	1/4"-18	41	17



Test Point Hoses

ZEC Solutions for Measuring Systems



THERMOPLASTIC TUBING AND HOSES
MADE IN ITALY

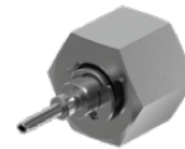
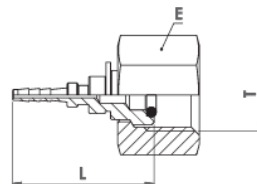
Fittings for TS7/TS8 Series MICRO BORE HOSES



Swage Fittings for TS7/TS8 Hoses

FEMMINA GIREVOLE SEDE PIANA CON O-RING PER MANOMETRO
SWIVEL FEMALE FLAT SEAT WITH O-RING FOR PRESSURE GAUGE

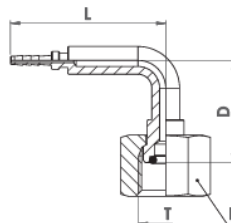
Materiale Material	Finitura superficiale Surface Finishing
Acciaio AVP Carbon Steel	Zincatura trivalente Zinc Plating



Codice Part Number	Diametro tubo Hose Size			Filetto Thread	Dimensioni Dimensions (mm)		
	Inch	mm	size	T	L	E	
RTSFD140R	1/12"	2.1	-	1/4"-19	26	17	
RTSFD380R	1/12"	2.1	-	3/8"-19	24	22	
RTSFD120R	1/12"	2.1	-	1/2"-14	27	24	
RTSFD12150R	1/12"	2.1	-	M12x1.5	26	14	
RTSFD14150R	1/12"	2.1	-	M14x1.5	26	19	
RTSFD20150R	1/12"	2.1	-	M20x1.5	34	24	
RPF140RDN3	1/8"	3.0	02	1/4"-19	30	19	
RPF120RDN3	1/8"	3.0	02	1/2"-14	38	27	
RPF20150RDN3	1/8"	3.0	02	M20x1.5	38	24	
RPF140R48	5/32"	4.0	02.5	1/4"-19	37	19	
RPF120R48	5/32"	4.0	02.5	1/2"-14	37	27	
RPF20150R48	5/32"	4.0	02.5	M20x1.5	37	24	

FEMMINA 90° GIREVOLE SEDE PIANA CON O-RING PER MANOMETRO
SWIVEL 90° FEMALE FLAT SEAT WITH O-RING FOR PRESSURE GAUGE

Materiale Material	Finitura superficiale Surface Finishing
Acciaio AVP Carbon Steel	Zincatura trivalente Zinc Plating



Codice Part Number	Diametro tubo Hose Size			Filetto Thread	Dimensioni Dimensions (mm)			
	Inch	mm	size	T	L	D	E	
RTSF90140R	1/12"	2.1	-	1/4"-19	38	25	19	
RTSF90120R	1/12"	2.1	-	1/2"-14	42	38	27	
RTSF9020150R	1/12"	2.1	-	M20x1.5	42	38	24	
RPF90140RDN3	1/8"	3.0	02	1/4"-19	38	25	19	
RPF90120RDN3	1/8"	3.0	02	1/2"-14	42	38	27	
RPF9020150RDN3	1/8"	3.0	02	M20x1.5	42	38	24	
RPF90140R48	5/32"	4.0	02.5	1/4"-19	43	25	19	
RPF90120R48	5/32"	4.0	02.5	1/2"-14	47	38	27	
RPF9020150R48	5/32"	4.0	02.5	M20x1.5	47	38	24	



Test Point Hoses



THERMOPLASTIC TUBING AND HOSES
MADE IN ITALY

ZEC Solutions for Measuring Systems

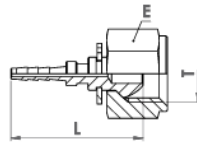
Fittings for TS7/TS8 Series MICRO BORE HOSES



Swage Fittings for TS7/TS8 Hoses

FEMMINA CON SVASATURA CONICA 60°
FEMALE WITH 60° CONICAL BORE

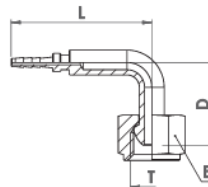
Materiale Material	Finitura superficiale Surface Finishing
Acciaio AVP Carbon Steel	Zincatura trivalente Zinc Plating



Codice Part Number	Diametro tubo Hose Size			Filetto Thread	Dimensioni Dimensions (mm)	
	Inch	mm	size	T	L	E
RTSFD18	1/12"	2.1	-	1/8"-28	24	13
RTSFD14	1/12"	2.1	-	1/4"-19	27	17
RTSFD38	1/12"	2.1	-	3/8"-19	27	22
RTSFD101	1/12"	2.1	-	M10x1	24	12
RTSFD1215	1/12"	2.1	-	M12x1.5	24	14
RTSFD1415	1/12"	2.1	-	M14x1.5	27	17
RTSFD1425	1/10"	2.5	-	1/4"-19	27	17
RPPFD18DN3	1/8"	3.0	02	1/8"-28	28	14
RTSFD1430	1/8"	3.0	02	1/4"-19	27	17
RPPFD101DN3	1/8"	3.0	02	M10x1	28	12
RPPFD1848	5/32"	4.0	02.5	1/8"-28	32	14
RPPFD1448	5/32"	4.0	02.5	1/4"-19	32	17

FEMMINA BSPP 90° CON SVASATURA CONICA 60°
BSPP 90° FEMALE WITH 60° CONICAL BORE

Materiale Material	Finitura superficiale Surface Finishing
Acciaio AVP Carbon Steel	Zincatura trivalente Zinc Plating



Codice Part Number	Diametro tubo Hose Size			Filetto Thread	Dimensioni Dimensions (mm)		
	Inch	mm	size	T	L	D	E
RTSF9018	1/12"	2.1	-	1/8"-28	26	16.5	13
RTSF9014	1/12"	2.1	-	1/4"-19	26	19	17
RPF9018DN3	1/8"	3.0	02	1/8"-28	39	26	14
RPF9014DN3	1/8"	3.0	02	1/4"-19	37	28	17
RPF901848	5/32"	4.0	02.5	1/8"-28	38	20	14
RPF901448	5/32"	4.0	02.5	1/4"-19	41	28	17



Test Point Hoses

ZEC Solutions for Measuring Systems



THERMOPLASTIC TUBING AND HOSES
MADE IN ITALY

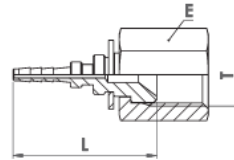
Fittings for TS7/TS8 Series MICRO BORE HOSES



Swage Fittings for TS7/TS8 Hoses

FEMMINA JIC SVASATURA CONICA 74°
JIC FEMALE WITH 74° CONICAL BORE

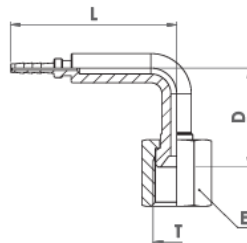
Materiale Material	Finitura superficiale Surface Finishing
Acciaio AVP Carbon Steel	Zincatura trivalente Zinc Plating



Codice Part Number	Diametro tubo Hose Size			Filetto Thread	Dimensioni Dimensions (mm)		
	Inch	mm	size		L	E	
RTSFD38J	1/12"	2.1	-	3/8"-24	25		12
RTSFD716J	1/12"	2.1	-	7/16"-20	23		14
RTSFD12J	1/12"	2.1	-	1/2"-20	26		17
RTSFD916J	1/12"	2.1	-	9/16"-18	29		17
RPF038JDN3	1/8"	3.0	02	3/8"-24	27		12
RPF0716JDN3	1/8"	3.0	02	7/16"-20	29		14
RPF012JDN3	1/8"	3.0	02	1/2"-20	30		17
RPF0916JDN3	1/8"	3.0	02	9/16"-18	33		17
RPF038J48	5/32"	4.0	02.5	3/8"-24	29		12
RPF0716J48	5/32"	4.0	02.5	7/16"-20	28		14
RPF012J48	5/32"	4.0	02.5	1/2"-20	30		17

FEMMINA JIC 90° CON SVASATURA CONICA 74°
JIC FEMALE 90° WITH 74° CONICAL BORE

Materiale Material	Finitura superficiale Surface Finishing
Acciaio AVP Carbon Steel	Zincatura trivalente Zinc Plating



Codice Part Number	Diametro tubo Hose Size			Filetto Thread	Dimensioni Dimensions (mm)		
	Inch	mm	size		L	D	E
RTSF9038J	1/12"	2.1	-	3/8"-24	40	24	12
RTSF90716J	1/12"	2.1	-	7/16"-20	39	23	14
RTSF9012J	1/12"	2.1	-	1/2"-20	39	23	17
RPF9038JDN3	1/8"	3.0	02	3/8"-24	40	24	12
RPF90716JDN3	1/8"	3.0	02	7/16"-20	47	23	14
RPF9012JDN3	1/8"	3.0	02	1/2"-20	44	23	17
RPF9038J48	5/32"	4.0	02.5	3/8"-24	40	24	12
RPF90716J48	5/32"	4.0	02.5	7/16"-20	44	23	14
RPF9012J48	5/32"	4.0	02.5	1/2"-20	44	23	17



Test Point Hoses

ZEC Solutions for Measuring Systems



THERMOPLASTIC TUBING AND HOSES
MADE IN ITALY

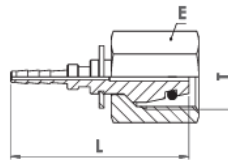
Fittings for TS7/TS8 Series MICRO BORE HOSES



Swage Fittings for TS7/TS8 Hoses

FEMMINA METRICA CON CONO / O-RING 24° SERIE LEGGERA DKOL
METRIC FEMALE WITH 24° TAPER / O-RING LIGHT DKOL SERIES

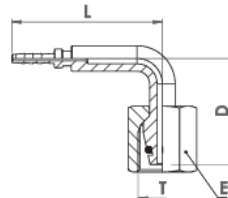
Materiale Material	Finitura superficiale Surface Finishing
Acciaio AVP Carbon Steel	Zincatura trivalente Zinc Plating



Codice Part Number	Diametro tubo Hose Size			Filetto Thread	Codolo Pipe	Dimensioni Dimensions (mm)	
	Inch	mm	size	T		L	E
RTSFD12156DIN	1/12"	2.1	-	M12x1.5	6	32	14
RTSFD14158DIN	1/12"	2.1	-	M14x1.5	8	32	17
RTSFD161510DIN	1/12"	2.1	-	M16x1.5	10	32	19
RTSFD181512DIN	1/12"	2.1	-	M18x1.5	12	34	22
RPFDKOL12156DN3	1/8"	3.0	02	M12x1.5	6	35	14
RPFDKOL14158DN3	1/8"	3.0	02	M14x1.5	8	35	17
RPFDKOL161510DN3	1/8"	3.0	02	M16x1.5	10	37	19
RPFDKOL12156326	5/32"	4.0	02.5	M12x1.5	6	36	14
RPFDKOL1415488	5/32"	4.0	02.5	M14x1.5	8	36	17
RPFDKOL16154810	5/32"	4.0	02.5	M16x1.5	10	37	19
RPFDKOL18154812	5/32"	4.0	02.5	M18x1.5	12	38	22

FEMMINA METRICA 90° CON CONO / O-RING 24° SERIE LEGGERA DKOL
METRIC FEMALE 90° WITH 24° TAPER / O-RING LIGHT DKOL SERIES

Materiale Material	Finitura superficiale Surface Finishing
Acciaio AVP Carbon Steel	Zincatura trivalente Zinc Plating



Codice Part Number	Diametro tubo Hose Size			Filetto Thread	Codolo Pipe	Dimensioni Dimensions (mm)		
	Inch	mm	size	T		L	D	E
RTSF901215DIN	1/12"	2.1	-	M12x1.5	6	26	25	14
RTSF9014158DIN	1/12"	2.1	-	M14x1.5	8	41	36	17
RTSF90161510DIN	1/12"	2.1	-	M16x1.5	10	42	40	19
RPF90DKOL1215DN3	1/8"	3.0	02	M12x1.5	6	38	25	14
RPF90DKOL1415DN3	1/8"	3.0	02	M14x1.5	8	41	36	17
RPF90DKOL1615DN3	1/8"	3.0	02	M16x1.5	10	47	40	19
RPF90DKOL12156326	5/32"	4.0	02.5	M12x1.5	6	38	25	14
RPF90DKOL1415488	5/32"	4.0	02.5	M14x1.5	8	46	36	17
RPF90DKOL16154810	5/32"	4.0	02.5	M16x1.5	10	47	40	19
RPF90DKOL18154812	5/32"	4.0	02.5	M18x1.5	12	47	40	22



Test Point Hoses

ZEC Solutions for Measuring Systems



THERMOPLASTIC TUBING AND HOSES
MADE IN ITALY

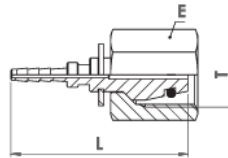
Fittings for TS7/TS8 Series MICRO BORE HOSES



Swage Fittings for TS7/TS8 Hoses

FEMMINA METRICA CON CONO / O-RING 24° SERIE PESANTE DKOS
METRIC FEMALE WITH 24° TAPER / O-RING HEAVY DKOS SERIES

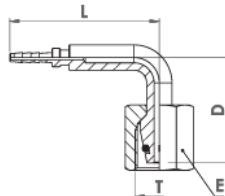
Materiale Material	Finitura superficiale Surface Finishing
Acciaio AVP Carbon Steel	Zincatura trivalente Zinc Plating



Codice Part Number	Diametro tubo Hose Size			Filetto Thread	Codolo Pipe	Dimensioni Dimensions (mm)	
	Inch	mm	size	T		L	E
RTSFD14156DIN	1/12"	2.1	-	M14x1.5	6	32	17
RTSFD16158DIN	1/12"	2.1	-	M16x1.5	8	35	19
RTSFD181510DIN	1/12"	2.1	-	M18x1.5	10	32	22
RTSFD201512DIN	1/12"	2.1	-	M20x1.5	12	34	24
RPFDKOS1415DN3	1/8"	3.0	02	M14x1.5	6	35	17
RPFDKOS1615DN3	1/8"	3.0	02	M16x1.5	8	35	19
RPFDKOS1815DN3	1/8"	3.0	02	M18x1.5	10	37	22
RPFDKOS1415486	5/32"	4.0	02.5	M14x1.5	6	36	17
RPFDKOS1615488	5/32"	4.0	02.5	M16x1.5	8	36	19
RPFDKOS18154810	5/32"	4.0	02.5	M18x1.5	10	37	22
RPFDKOS20154812	5/32"	4.0	02.5	M20x1.5	12	40	24

FEMMINA METRICA 90° CON CONO / O-RING 24° SERIE PESANTE DKOS
METRIC FEMALE 90° WITH 24° TAPER / O-RING HEAVY DKOS SERIES

Materiale Material	Finitura superficiale Surface Finishing
Acciaio AVP Carbon Steel	Zincatura trivalente / Zinc Plating



Codice Part Number	Diametro tubo Hose Size			Filetto Thread	Codolo Pipe	Dimensioni Dimensions (mm)		
	Inch	mm	size	T		L	D	E
RTSF901415DIN	1/12"	2.1	-	M14x1.5	6	25	25	17
RTSF901615DIN	1/12"	2.1	-	M16x1.5	8	25	25	19
RTSF90181510DIN	1/12"	2.1	-	M18x1.5	10	42	40	22
RPF90DKOS1415DN3	1/8"	3.0	02	M14x1.5	6	39	25	17
RPF90DKOS1615DN3	1/8"	3.0	02	M16x1.5	8	41	36	19
RPF90DKOS1815DN3	1/8"	3.0	02	M18x1.5	10	47	40	22
RPF90DKOS1415486	5/32"	4.0	02.5	M14x1.5	6	39	25	17
RPF90DKOS1615488	5/32"	4.0	02.5	M16x1.5	8	46	36	19
RPF90DKOS18154810	5/32"	4.0	02.5	M18x1.5	10	47	40	22
RPF90DKOS20154812	5/32"	4.0	02.5	M20x1.5	12	47	40	24



Test Point Hoses

ZEC Solutions for Measuring Systems



THERMOPLASTIC TUBING AND HOSES
MADE IN ITALY

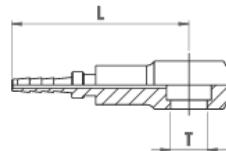
Fittings for TS7/TS8 Series MICRO BORE HOSES



Swage Fittings for TS7/TS8 Hoses

RACCORDO OCCHIO BANJO FITTING

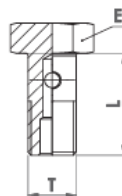
Materiale Material	Finitura superficiale Surface Finishing
Acciaio AVP Carbon Steel	Zincatura trivalente Zinc Plating



Codice Part Number	Diametro tubo Hose Size			Foro Hole	Dimensioni Dimensions (mm)
	Inch	mm	size	T	L
OP8M112	1/12"	2.1	-	8	30
OP18112	1/12"	2.1	-	1/8"	32
OP10M112	1/12"	2.1	-	10	32
OP8MDN3	1/8"	3.0	02	8	37
OP18DN3	1/8"	3.0	02	1/8"	32
OP10MDN3	1/8"	3.0	02	10	32
OP8M48	5/32"	4.0	02.5	8	35
OP1848	5/32"	4.0	02.5	1/8"	37
OP10M48	5/32"	4.0	02.5	10	37

BULLONE FORATO BORED BOLT

Materiale Material	Finitura superficiale Surface Finishing
Acciaio AVP Carbon Steel	Zincatura trivalente Zinc Plating



Codice Part Number	Filetto Thread	Dimensioni Dimensions (mm)	
	T	L	E
VC81	M8x1	17	12
VC101	M10x1	20	14
VC18	1/8"-28	18	14



Test Point Hoses



THERMOPLASTIC TUBING AND HOSES
MADE IN ITALY

ZEC Solutions for Measuring Systems

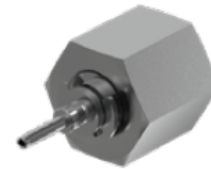
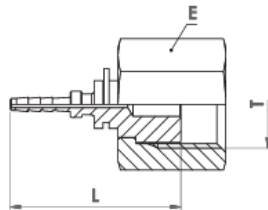


Fittings for TS7/TS8 Series MICRO BORE HOSES

Swage Fittings for TS7/TS8 Hoses

FEMMINA ORFS O-RING FACE SEAL
ORFS FEMALE O-RING FACE SEAL

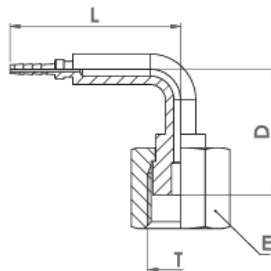
Materiale Material	Finitura superficiale Surface Finishing
Acciaio AVP Carbon Steel	Zincatura trivalente Zinc Plating



Codice Part Number	Diametro tubo Hose Size			Filetto Thread	Dimensioni Dimensions (mm)		
	Inch	mm	size	T	L	E	
RTSFD916ORFS	1/12"	2.1	-	9/16"-18	25	19	
RTSFD1116ORFS	1/12"	2.1	-	11/16"-16	33	22	
RPF916ORFSDN3	1/8"	3.0	02	9/16"-18	27	19	
RPF1116ORFSDN3	1/8"	3.0	02	11/16"-16	35	22	
RPF916ORFS48	5/32"	4.0	02.5	9/16"-18	31	19	

FEMMINA 90° ORFS O-RING FACE SEAL
90° ORFS FEMALE O-RING FACE SEAL

Materiale Material	Finitura superficiale Surface Finishing
Acciaio AVP Carbon Steel	Zincatura trivalente Zinc Plating



Codice Part Number	Diametro tubo Hose Size			Filetto Thread	Dimensioni Dimensions (mm)		
	Inch	mm	size	T	L	D	E
RTSF90916ORFS	1/12"	2.1	-	9/16"-18	40	24	19
RPF90916ORFSDN3	1/8"	3.0	02	9/16"-18	40	24	19
RPF90916ORFS48	5/32"	4.0	02.5	9/16"-18	40	24	19



Test Point Hoses

ZEC Solutions for Measuring Systems



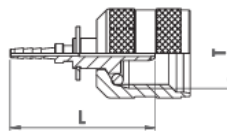
Fittings for TS7/TS8 Series MICRO BORE HOSES



Swage Fittings for TS7/TS8 Hoses

FEMMINA GIREVOLE A SPINA PER RACCORDO DI CONTROLLO CON ZIGRINATURA
KNURLED SWIVEL PIN FEMALE TEST COUPLING FITTING

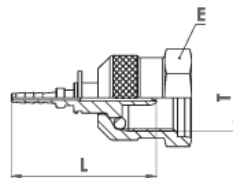
Materiale Material	Finitura superficiale Surface Finishing
Acciaio AVP Carbon Steel	Zincatura trivalente Zinc Plating



Codice Part Number	Diametro tubo Hose Size			Filetto Thread	Dimensioni Dimensions (mm)	
	Inch	mm	size	T	L	
RTSFD162SPZ	1/12"	2.1	-	M16x2	33	
RTSFD1615SPZ	1/12"	2.1	-	M16x1.5	33	
RTSFD162SPZDN3	1/8"	3.0	02	M16x2	37	
RTSFD1615SPZDN3	1/8"	3.0	02	M16x1.5	37	
RTSFD162SPZ48	5/32"	4.0	02.5	M16x2	37	
RTSFD1615SPZ48	5/32"	4.0	02.5	M16x1.5	37	

FEMMINA GIREVOLE A SPINA PER RACCORDO DI CONTROLLO CON ESAGONO
SWIVEL PIN FEMALE TEST COUPLING FITTING WITH HEXAGON

Materiale Material	Finitura superficiale Surface Finishing
Acciaio AVP Carbon Steel	Zincatura trivalente Zinc Plating



Codice Part Number	Diametro tubo Hose Size			Filetto Thread	Dimensioni Dimensions (mm)		
	Inch	mm	size	T	L	E	
RTSFD162SP	1/12"	2.1	-	M16x2	33	19	
RTSFD1615SP	1/12"	2.1	-	M16x1.5	33	19	
RTSFD162SPDN3	1/8"	3.0	02	M16x2	37	19	
RTSFD1615SPDN3	1/8"	3.0	02	M16x1.5	37	19	
RTSFD162SP48	5/32"	4.0	02.5	M16x2	37	19	
RTSFD1615SP48	5/32"	4.0	02.5	M16x1.5	37	19	



Test Point Hoses



THERMOPLASTIC TUBING AND HOSES
MADE IN ITALY

ZEC Solutions for Measuring Systems

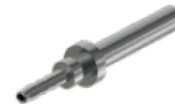
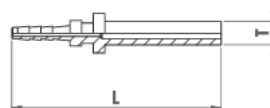
Fittings for TS7/TS8 Series MICRO BORE HOSES



Swage Fittings for TS7/TS8 Hoses

CODOLO LISCIO DIRITTO
STRAIGHT STANDPIPE

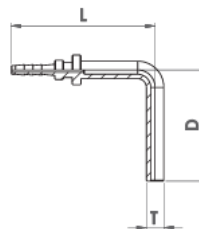
Materiale Material	Finitura superficiale Surface Finishing
Acciaio AVP Carbon Steel	Zincatura trivalente Zinc Plating



Codice Part Number	Diametro tubo Hose Size			Codolo Pipe T	Dimensioni Dimensions (mm)	
	Inch	mm	size		L	
RTSEP4	1/12"	2.1	-	4	36	
RTSEP6	1/12"	2.1	-	6	35	
RTSEP8	1/12"	2.1	-	8	35	
EP4DN3	1/8"	3.0	02	4	41	
EP6DN3	1/8"	3.0	02	6	36	
EP8DN3	1/8"	3.0	02	8	38	
EP448	5/32"	4.0	02.5	4	44	
EP648	5/32"	4.0	02.5	6	46	
EP848	5/32"	4.0	02.5	8	41	

CODOLO LISCIO A 90°
ELBOW 90° STANDPIPE

Materiale Material	Finitura superficiale Surface Finishing
Acciaio AVP Carbon Steel	Zincatura trivalente Zinc Plating



Codice Part Number	Diametro tubo Hose Size			Codolo Pipe T	Dimensioni Dimensions (mm)	
	Inch	mm	size		L	D
RTSEP904	1/12"	2.1	-	4	25	28
RTSEP906	1/12"	2.1	-	6	25	28
RTSEP908	1/12"	2.1	-	8	25	28
EP904DN3	1/8"	3.0	02	4	33	26
EP906DN3	1/8"	3.0	02	6	32	28
EP908DN3	1/8"	3.0	02	8	41	37
EP90448	5/32"	4.0	02.5	4	41	32
EP90648	5/32"	4.0	02.5	6	41	32
EP90848	5/32"	4.0	02.5	8	46	37



Test Point Hoses



THERMOPLASTIC TUBING AND HOSES
MADE IN ITALY

ZEC Solutions for Measuring Systems

Fittings for TS7/TS8 Series

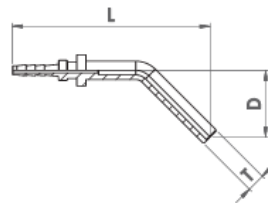
MICRO BORE HOSES



Swage Fittings for TS7/TS8 Hoses

CODOLO LISCIO A 45°
ELBOW 45° STANDPIPE

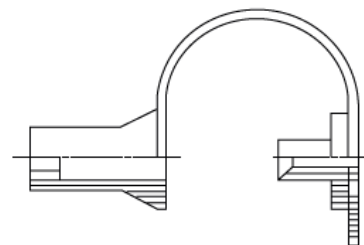
Materiale Material	Finitura superficiale Surface Finishing
Acciaio AVP Carbon Steel	Zincatura trivalente Zinc Plating



Codice Part Number	Diametro tubo Hose Size			Codolo Pipe	Dimensioni Dimensions (mm)		
	Inch	mm	size		T	L	D
RTSEP454	1/12"	2.1	-	4	43	15	
RTSEP456	1/12"	2.1	-	6	44	17	
RTSEP458	1/12"	2.1	-	8	52	20	
EP454DN3	1/8"	3.0	02	4	43	15	
EP456DN3	1/8"	3.0	02	6	44	17	
EP458DN3	1/8"	3.0	02	8	52	20	
EP45448	5/32"	4.0	02.5	4	48	20	
EP45648	5/32"	4.0	02.5	6	49	20	
EP45848	5/32"	4.0	02.5	8	57	20	

CAPPUCCIO PARAPOLVERE
DUST PROTECTION CAP

Codice Part Number
RTSPARAPOLVERE





Test Point Hoses

ZEC Solutions for Measuring Systems



THERMOPLASTIC TUBING AND HOSES
MADE IN ITALY

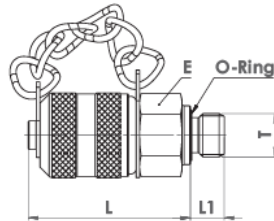
Test Couplings for TS7/TS8 Series MICRO BORE HOSES



Test Couplings

MINIPRESA M16X2 MASCHIO FILETTATURA CILINDRICA - TENUTA O-RING SOTTOTESTA
TEST COUPLING M16X2 MALE PARALLEL THREAD - UNDER HEAD O-RING SEALING

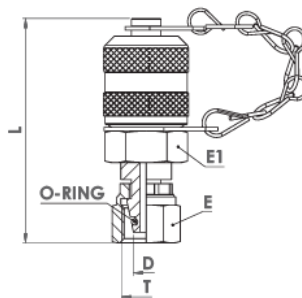
Materiale Material	Finitura superficiale Surface Finishing
Acciaio AVP Carbon Steel	Zincatura trivalente Zinc Plating



Codice Part Number	Filetto Thread	Dimensioni Dimensions (mm)		
		L	L1	E
RTSMM18OR	1/8"-28	37	8	17
RTSMM14OR	1/4"-19	37	12	19
RTSMM38OR	3/8"-19	37	12	22
RTSMM12OR	1/2"-14	37	14	27
RTSMM101SOR	M10x1	37	8	17
RTSMM1215OR	M12x1.5	37	12	17
RTSMM1415OR	M14x1.5	37	12	19

MINIPRESA M16X2 FEMMINA - TENUTA DKO 24° O-RING
TEST COUPLING M16X2 FEMALE - DKO 24° O-RING SEALING

Materiale Material	Finitura superficiale Surface Finishing
Acciaio AVP Carbon Steel	Zincatura trivalente Zinc Plating



Codice Part Number	Filetto Thread	Tipo Type	Dimensioni Dimensions (mm)			
			D	L	E	E1
RTSMF12156DIN	M12x1.5	L	6	53	14	17
RTSMF14158DIN	M14x1.5	L	8	55	17	17
RTSMF161510DIN	M16x1.5	L	10	56	19	19
RTSMF181512DIN	M18x1.5	L	12	57	22	19
RTSMF221515DIN	M22x3.5	L	15	59	27	22
RTSMF261518DIN	M26x1.5	L	18	59	32	22
RTSMF30222DIN	M30x2	L	22	59	36	27
RTSMF14156DIN	M14x1.5	S	6	54	17	17
RTSMF16158DIN	M16x1.5	S	8	56	19	17
RTSMF181510DIN	M18x1.5	S	10	57	22	19
RTSMF201512DIN	M20x1.5	S	12	58	24	19
RTSMF241516DIN	M24x1.5	S	16	56	30	22
RTSMF30220DIN	M30x2	S	20	57	36	27



Test Point Hoses



THERMOPLASTIC TUBING AND HOSES
MADE IN ITALY

ZEC Solutions for Measuring Systems

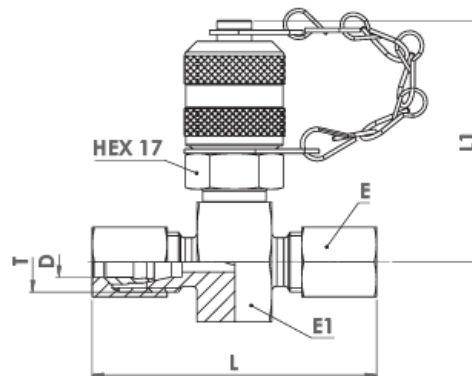
Test Couplings for TS7/TS8 Series MICRO BORE HOSES



Test Couplings

MINIPRESA M16X2 FEMMINA INTERMEDIA - TENUTA CEL-S 24°
TEST COUPLING M16X2 INTERMEDIATE FEMALE - CEL-S 24° SEALING

Materiale Material	Finitura superficiale Surface Finishing
Acciaio AVP Carbon Steel	Zincatura trivalente Zinc Plating



Codice Part Number	Filetto Thread	Tipo Type	Dimensioni Dimensions (mm)				
			D	L	L1	E	E1
RTSMFF12156DIN	M12x1.5	L	6	57	49	14	24
RTSMFF14158DIN	M14x1.5	L	8	51	49	17	24
RTSMFF161510DIN	M16x1.5	L	10	53	49	19	24
RTSMFF181512DIN	M18x1.5	L	12	53	49	22	24
RTSMFF221515DIN	M22x1.5	L	15	55	51	27	27
RTSMFF261518DIN	M26x1.5	L	18	57	53	32	32
RTSMFF30222DIN	M30x2	L	22	61	53	36	32
RTSMFF14156DIN	M14x1.5	S	6	55	49	17	24
RTSMFF16158DIN	M16x1.5	S	8	55	49	19	24
RTSMFF181510DIN	M18x1.5	S	10	57	49	22	24
RTSMFF201512DIN	M20x1.5	S	12	57	49	24	24
RTSMFF241516DIN	M24x1.5	S	16	63	52	30	27
RTSMFF30220DIN	M30x2	S	20	69	53	36	32



Test Point Hoses

ZEC Solutions for Measuring Systems



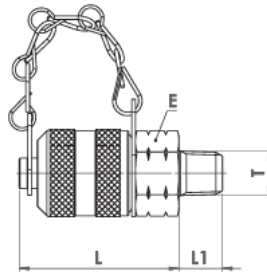
Test Couplings for TS7/TS8 Series MICRO BORE HOSES



Test Couplings

MINIPRESA M16X2 MASCHIO FILETTATURA CONICA - TENUTA SUL FILETTO
TEST COUPLING M16X2 MALE TAPER THREAD - THREAD SEALING

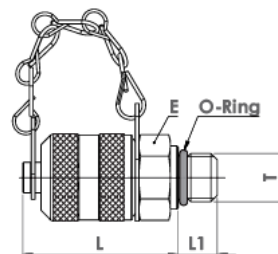
Materiale Material	Finitura superficiale Surface Finishing
Acciaio AVP Carbon Steel	Zincatura trivalente Zinc Plating



Codice Part Number	Filetto Thread		Dimensioni Dimensions (mm)		
	T		L	L1	E
RTSMMR18K	1/8"-28	R-ISO 7/1	37	10	17
RTSMMR14K	1/4"-19	R-ISO 7/1	37	12	19
RTSMMR38K	3/8"-19	R-ISO 7/1	37	14	22
RTSMM18NPT	1/8"-27	NPTF	37	10	17
RTSMM14NPT	1/4"-18	NPTF	37	17	17
RTSMM38NPT	3/8"-18	NPTF	37	16	22
RTSMM12NPT	1/2"-14	NPTF	37	17	24

MINIPRESA M16X2 MASCHIO FILETTATURA CILINDRICA - TENUTA O-RING RADIALE
TEST COUPLING M16X2 MALE PARALLEL THREAD - RADIAL O-RING SEALING

Materiale Material	Finitura superficiale Surface Finishing
Acciaio AVP Carbon Steel	Zincatura trivalente Zinc Plating



Codice Part Number	Filetto Thread		Dimensioni Dimensions (mm)		
	T		L	L1	E
RTSMM810R	M8x1		37	8,5	17
RTSMM1010R	M10x1		37	8,5	17
RTSMM716OR	7/16"-20		37	9	17
RTSMM120RU	1/2"-20		37	10	17
RTSMM916OR	9/16"-18		37	10	19



Test Point Hoses

ZEC Solutions for Measuring Systems



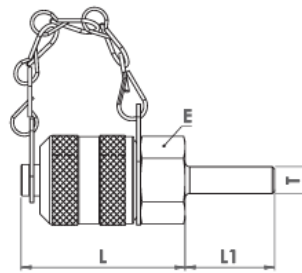
Test Couplings for TS7/TS8 Series MICRO BORE HOSES



Test Couplings

MINIPRESA M16X2 CODOLO LISCIO
TEST COUPLING M16X2 STANDPIPE

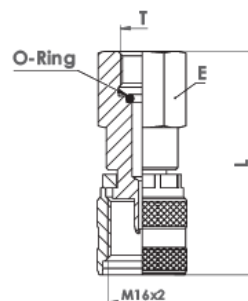
Materiale Material	Finitura superficiale Surface Finishing
Acciaio AVP Carbon Steel	Zincatura trivalente Zinc Plating



Codice Part Number	Codolo Pipe	Dimensioni Dimensions (mm)		
		L	L1	E
RTSME6	6	37	20	17
RTSME8	8	37	20	17
RTSME10	10	37	20	17
RTSME12	12	37	20	17
RTSME14	14	37	20	17
RTSME15	15	37	20	17
RTSME16	16	37	20	17

NIPLES PER COLLEGAMENTO MANOMETRO M16X2
NIPPLE FOR PRESSURE GAUGE CONNECTION M16X2

Materiale Material	Finitura superficiale Surface Finishing
Acciaio AVP Carbon Steel	Zincatura trivalente Zinc Plating



Codice Part Number	Filetto Thread	Dimensioni Dimensions (mm)	
	T	L	E
RTSN14	1/4"-19	50	19
RTSN12	1/2"-14	55	27
RTSN1418NPTF	1/4"-18	50	19