



Oil Spill Containment

溢油托盤

Compliance



Configuration	Sump Capacity		Load Bearing Capacity (kg)	External Dimensions (mm)
	Litre	Gallon		
1 Drum centre	45	12	567	635 x 635 x 140
2 Drum centre	90	24	1,134	1,245 x 635 x 140
4 Drum centre	185	49	2,268	1,245 x 1,245 x 140
6 Drum centre	276	73	3,402	1,854 x 1,245 x 140
8 Drum centre	371	98	4,536	2,464 x 1,245 x 140



Color



Black Silver Yellow



Configuration	Sump Capacity		Load Bearing Capacity (kg)	External Dimensions (mm)
	Litre	Gallon		
2 Drum in-line	250	66	1,134	1,245 x 635 x 457
3 Drum in-line	284	75	1,701	1,854 x 635 x 295
4 Drum in-line	284	75	2,268	2,464 x 635 x 229
4 Drum Square	276	73	2,268	1,245 x 1,245 x 260



Description	Dimensions (mm)	Load Bearing Capacity (kg)
Oil Pallet Ramp	260 x 1,245 x 838	454



Oil Spill Containment

溢油托盤

Stainless Steel



Compliance



Configuration	Sump Capacity		Load Bearing Capacity (kg)	External Dimensions (mm)
	Litre	Gallon		
Steel 2 Drum in-line	200	55	2,000	1,250 x 700 x 360
Steel 3 Drum in-line	360	95	2,700	2,050 x 820 x 330
Steel 4 Drum in-line	350	92	3,500	1,250 x 1250 x 360

Without Drain



Configuration	Sump Capacity		Load Bearing Capacity (kg)	External Dimensions (mm)
	Litre	Gallon		
2 Drum in-line	200	55	1,134	1,245 x 457 x 635



Flexible Oil Spill Containment Berm

彈性溢油護堤

Compliance



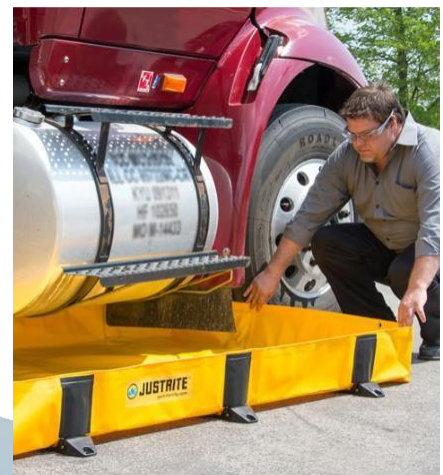
Sturdy portable berms works with drive-in and wide oil spill applications. Stainless steel braces **lock at 90°** offering strong structural integrity.



28372



Capacity		Interior Dimensions (Metre)
Litre	Gallon	
662	175	1.2 x 1.8 x 0.305
890	235	1.2 x 2.4 x 0.305
1,344	355	1.8 x 2.4 x 0.305
1,798	475	2.4 x 2.4 x 0.305
2,820	745	3.0 x 3.0 x 0.305
4,069	1,075	3.7 x 3.7 x 0.305
5,432	1,435	3.7 x 4.9 x 0.305
6,795	1,795	3.7 x 6.1 x 0.305
7,230	1,910	4.9 x 4.9 x 0.305
9,047	2,390	4.9 x 6.1 x 0.305
11,318	2,990	6.1 x 6.1 x 0.305



Compact Flexible Spill Berm

小型彈性溢油護堤

Compliance



PVC Pop-up Pool

Capacity: 250L / 66 Gallon

Outer Dia., mm: 356 x 1,168 x 1,168

Capacity		Interior Dimensions (Metre)	Sidewall Height (mm)
Litre	Gallon		
9	5	0.6 x 0.6	51
38	10		102
38	10	0.6 x 1.2	51
76	20		102
151	20	0.6 x 2.4	102
76	40	1.2 x 1.2	51
151	20		102
227	60	1.2 x 1.8	102
151	40	1.2 x 2.4	51
303	80		102
167	44	1.8 x 1.8	51
341	90		102
511	135	3.0 x 3.4	51
833	200	3.0 x 5.5	51



專業訂制 歡迎提供所需尺寸！

Tell us the size you need We'll fix it!

Oil Spill Kit

溢油套裝



Comply with the regulations of EPA 40 CFR 264.175 of EPA and SPCC as well as U.S. NPDES.

45 gallon



20 gallon



95 gallon



65 gallon



Model	Sump Capacity		Dimensions (mm)	Weight (kg)	Contents
	Litre	Gallon			
20 gallon	81	21.50	605 x 660	11.30	1pc 20-gallon drum 防溢桶, 25pcs 50cm x 40cm absorbent pad 吸油紙, 6pcs 7.6cm x 120cm absorbent sock 吸油條, 5pcs 45cmx45cm absorbent pillow 吸油枕, 3pcs hazamat disposal bags 防化處理袋, 1 pair safety goggles 防化眼鏡, 1 pair of safety gloves 丁睛手套
45 gallon	170	45.00	730 x 590 x 1,130	24.10	1pc 240L drum 防溢桶, 125pcs 50cm x 40cm absorbent pad 吸油紙, 12pcs 7.6cm x 120cm absorbent sock 吸油條, 5pcs 45cmx45cm absorbent pillow 吸油枕, 5pcs hazamat disposal bags 防化處理袋, 1 pair safety goggles 防化眼鏡, 1 pair of safety gloves 丁睛手套
65 gallon	228	60.00	1,170 x 710 x 785	25.50	1pc 65-gallon drum 防溢桶, 125pcs 50cm x 40cm absorbent pad 吸油紙, 20pcs 7.6cm x 120cm absorbent sock 吸油條, 10pcs 45cmx45cm absorbent pillow 吸油枕, 10pcs hazamat disposal bags 防化處理袋, 1 pair safety goggles 防化眼鏡, 1 pair of safety gloves 丁睛手套
95 gallon	302	80.00	1,040 x 785	41.00	1pc 95-gallon drum 防溢桶, 125pcs 50cm x 40cm absorbent pad 吸油紙, 24pcs 7.6cm x 120cm absorbent sock 吸油條, 15pcs 45cmx45cm absorbent pillow 吸油枕, 10pcs hazamat disposal bags 防化處理袋, 1 pair safety goggles, 1 pair of safety gloves

Safety Cabinet

安全櫃



- Yellow for flammable liquids
- Red for paints, inks, and other combustible liquids
- Blue for corrosives and hazardous liquids
- Green for pesticides and insecticides
- Silver or neutral colors for laboratory settings
- White, beige or gray for waste or outdoor lockers



Outdoor 户外



Capacity 容量 Litre 升	No. of Doors 門 Style 款式	Dimensions (H*W*D) 尺寸		Adj Shelves 可裝層數	Sump Capacity 污水坑容量 Litre 升	Pack. Wgt. 包裝重量 kg 公斤
		Exterior 外(mm)	Interior 內(mm)			
114	2 door 門, 手動	1118*1092*457	1006*1003*370	1	19.7	105
	2 door 門, 自動關門					108
170	2 door 門, 手動	1651*1092*457	1537*1003*370	1	19.7	141
	2 door 門, 自動關門					142
227	2 door 門, 手動	1651*864*864	1537*781*771	2	31.5	176
	2 door 門, 自動關門					178
341	2 door 門, 手動	1651*1092*864	1537*1003*771	2	40.6	218
	2 door 門, 自動關門					

Check with us for other sizes! 歡迎查詢其他尺寸!



Silt Protector / Marine Silt Curtain

MP MSP Series



What is MP Silt Protector?

MP Silt Protector is a silt curtain installed in water for preventing spread of environmental contaminants induced by coastal and riverside construction.

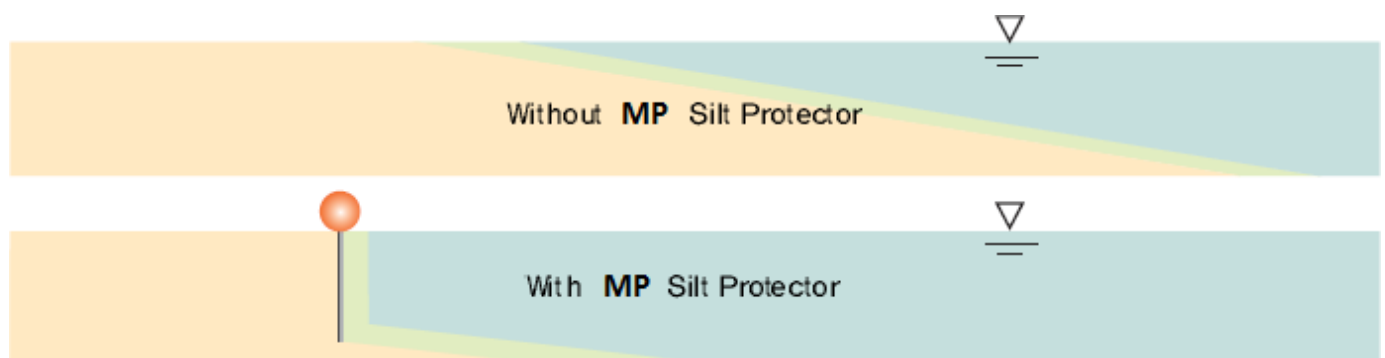
It is proven that the preventive effect of contaminant spread by MP Silt Protector is at a minimum of 45% to a maximum of 95%. Waterflow per minute 6 - 25 liter

Silt protectors usually consist of float, canvas and anchor parts and MP Silt Protector is supplied in the unit set of assembled float and canvas parts. MP Silt Protector is made secure in structure so that it can well stand large surges of energy such as tides, waves and wind.

No recycled materials are used for MP Silt Protector. Especially, floats made of recycled materials may cause a serious loss of buoyancy due to faster absorption of water after the installation of silt protector.



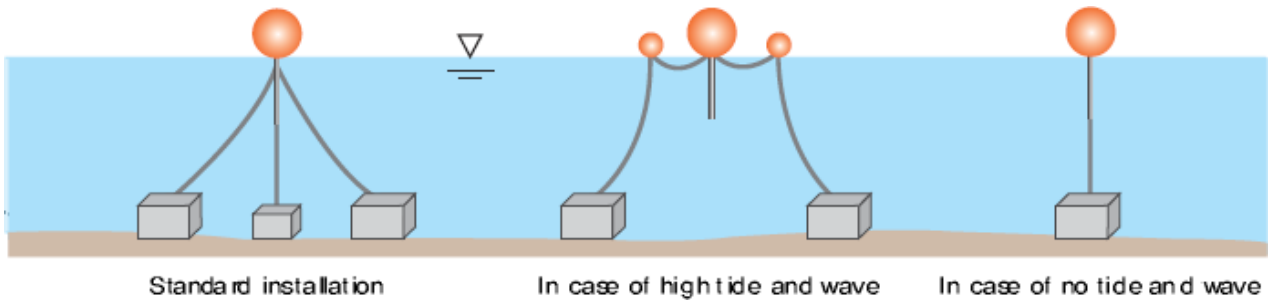
Function of MP Silt Protector





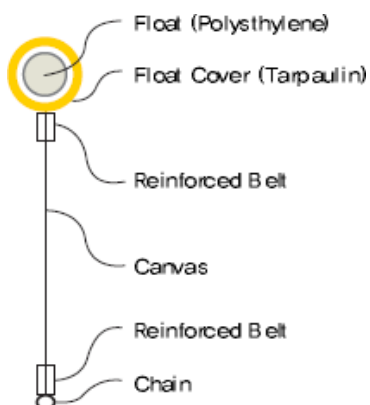
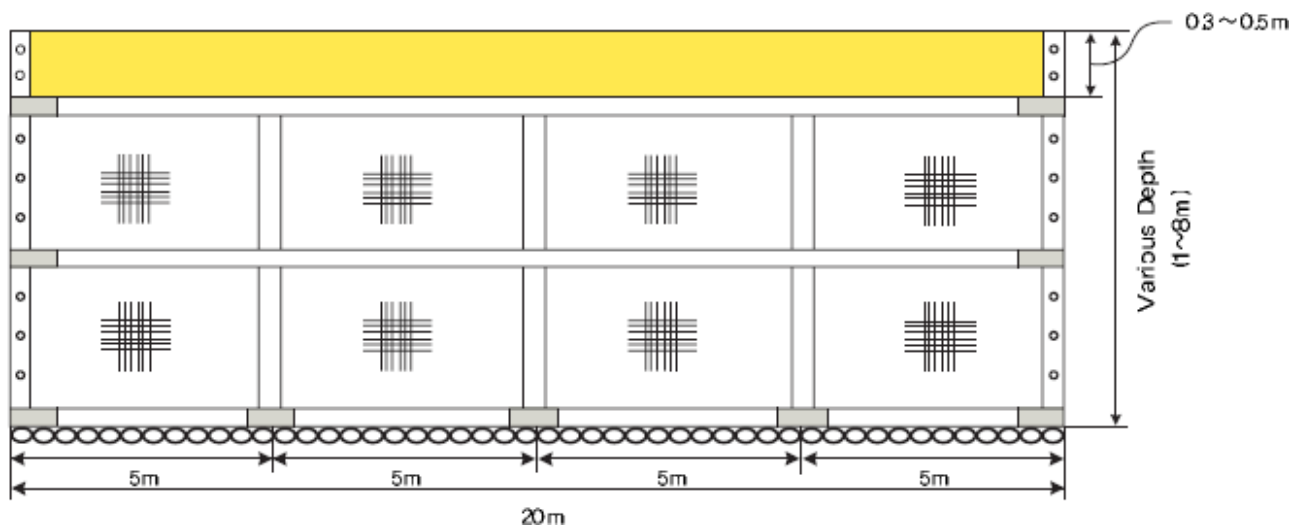
Silt Protector / Marine Silt Curtain

Installation of MP Silt Protector



Types of MP Silt Protector

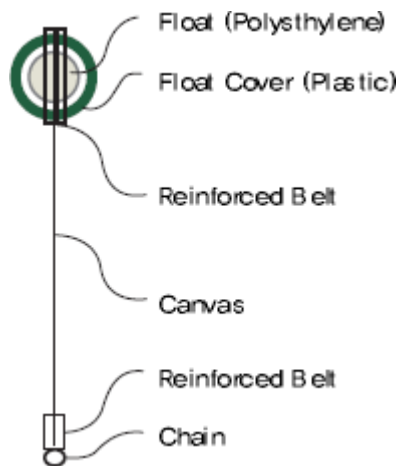
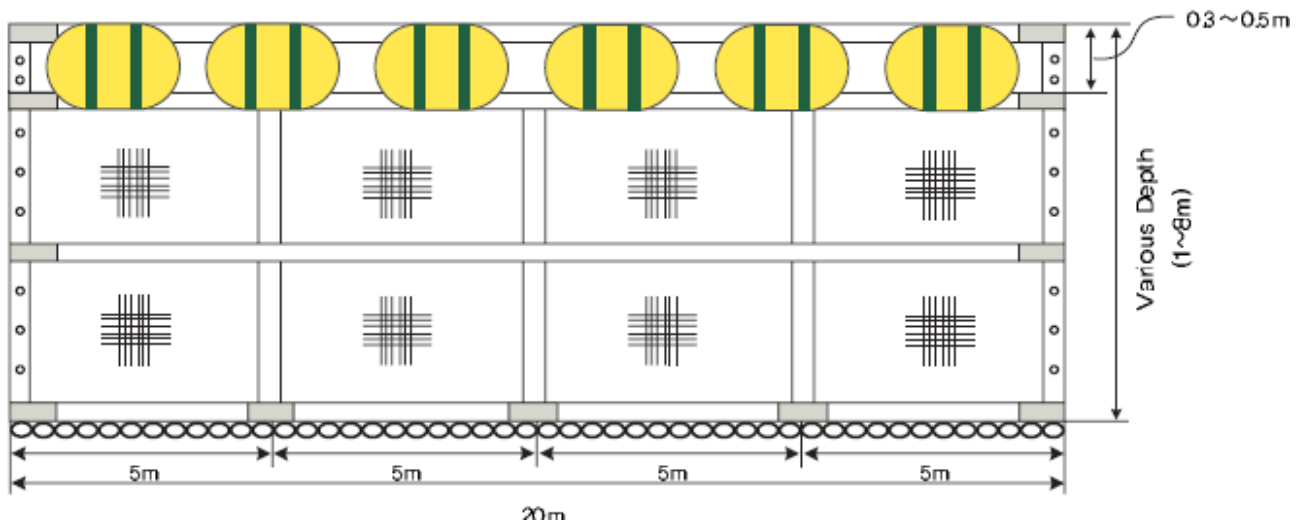
Tube Type for the high external force of tide, wave and wind





Silt Protector / Marine Silt Curtain

Covering Head Type for the low external force



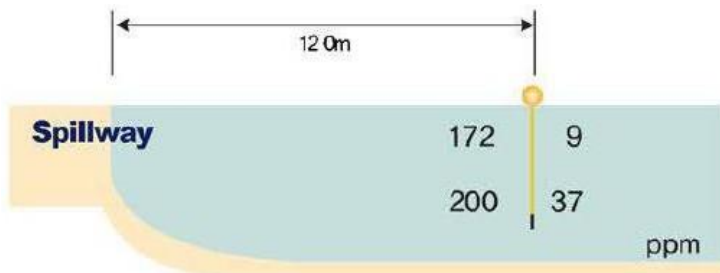
Application of MP Silt Protector

- Prevention of spreading fine soils and sands induced by coastal landfill construction
- Prevention of contamination nearby seaport and revetment construction area
- Prevention of contaminant spread in the area of river dredging and development
- Protection of seafarming and swimming beach area nearby coastal construction



Silt Protector / Marine Silt Curtain

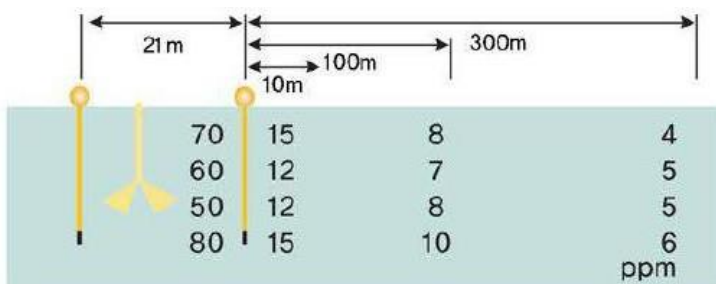
Preventive Effect of MP Silt Protector



Case 1: Reclaiming work

$$\frac{172-9}{172} \times 100 = 94.8\%$$

$$\frac{200-37}{200} \times 100 = 81.8\%$$



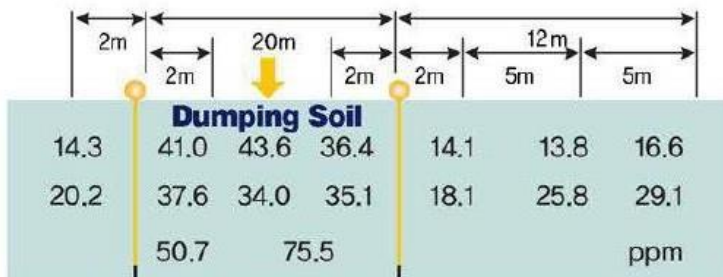
Case 2: Dredging work

$$\frac{70-15}{70} \times 100 = 78.6\%$$

$$\frac{60-12}{60} \times 100 = 80.0\%$$

$$\frac{50-12}{50} \times 100 = 76.0\%$$

$$\frac{80-15}{80} \times 100 = 81.3\%$$



Case 3: Dumping at sea

$$\frac{41.0-14.3}{41.0} \times 100 = 65.1\% \text{ (upper layer, left side)}$$

$$\frac{36.4-14.1}{36.4} \times 100 = 61.3\% \text{ (upper layer, right side)}$$

$$\frac{37.6-20.2}{37.6} \times 100 = 46.3\% \text{ (mid. layer, left side)}$$

$$\frac{35.1-18.1}{35.1} \times 100 = 48.4\% \text{ (mid. layer, right side)}$$





Silt Protector / Marine Silt Curtain

Specifications of MP Silt Protector

Property	Unit	Test Method	MSP15	MSP20	MSP25	MSP30
Canvas Unit Weight	g/m ²	ASTM D 5261	450	650	750	900
Canvas Tensile Strength (Grab)	N	ASTM D 4632	3800	5000	6300	7500
Canvas Tensile Strength	kN/m	ASTM D 4595	150	200	250	300
Canvas Elongation (Grab)	%	ASTM D 4632	10~30	10~30	10~30	10~30
Canvas Permeability	cm/s	ASTM D 4491	$\alpha \times 10^{-2 \sim 4}$ ($\alpha = 1 \sim 9.9$)			
Rate of Contraction	%	ISO 7771	± 0.2			
Material of Canvas		ASTM D 276	Polyester			
Float	Diameter	300mm, 400mm, 500mm				
	Material	No recycled materials are used since recycled materials may cause a serious loss of the buoyancy of the float due to comparatively faster absorption of water after the installation of Silt Protector.				