

1 January 2023

Euroflex SAE 100 R6 / EN 854 1TE Braided Hose

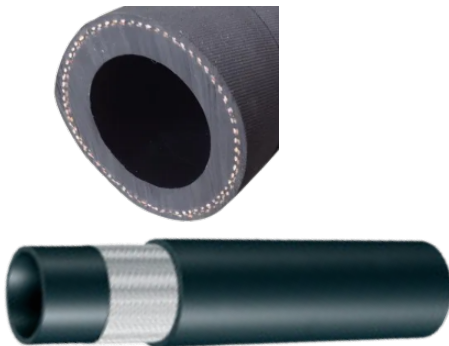
Key Features:

- * High flexibility
- * Wide range of fluid compatibility



Application & Fluids:

- * Hydraulics: low pressure lines, return lines
- * Mineral oils, vegetable and rape seed oils, glycol and polyglycol based oils, synthetic ester based oils, oils in aqueous emulsion, water



Continuous Service Temperature Range

-40°C, -40°F
 125°C, 257°F

Tube

Oil resistant synthetic rubber

Reinforcement








One high resistance textile braids

Cover

Weather resistant synthetic rubber

Applicable Specs

SAE 100 R6; EN 854 R6 / 1TE; ISO 4079 R6 / 1TE;
 Exceeds the performance of SAE 100 R6

|  | | |  | |  | |  | |  | |  | |  | |
|---|------|-------|---|------|---|------|---|-----|---|------|---|------|---|-------|
| HOSE SIZE | | | R.O.D. | | O.D. | | MAX W.P. | | BURST | | MIN. BEND | | WEIGHT | |
| DN | dash | inch | mm | inch | mm | inch | bar | psi | bar | psi | mm | inch | g/m | lb/ft |
| 5 | - 3 | 3/16" | | | 11,0 | 0,43 | 35 | 500 | 140 | 2030 | 35 | 1,38 | 90 | 0,06 |
| 6 | - 4 | 1/4" | | | 12,6 | 0,50 | 30 | 430 | 120 | 1740 | 45 | 1,77 | 115 | 0,08 |
| 8 | - 5 | 5/16" | | | 14,1 | 0,56 | 30 | 430 | 120 | 1740 | 65 | 2,56 | 140 | 0,09 |
| 10 | - 6 | 3/8" | | | 15,8 | 0,62 | 30 | 430 | 120 | 1740 | 75 | 2,95 | 160 | 0,11 |
| 12 | - 8 | 1/2" | | | 19,4 | 0,76 | 30 | 430 | 120 | 1740 | 90 | 3,54 | 210 | 0,14 |
| 16 | - 10 | 5/8" | | | 23,0 | 0,91 | 30 | 430 | 120 | 1740 | 115 | 4,53 | 290 | 0,19 |
| 19 | - 12 | 3/4" | | | 26,0 | 1,02 | 30 | 430 | 120 | 1740 | 140 | 5,51 | 325 | 0,22 |
| 25 | - 16 | 1" | | | 32,0 | 1,26 | 30 | 430 | 120 | 1740 | 150 | 5,91 | 400 | 0,27 |

Euroflex EN 854 2TE Braided Hose

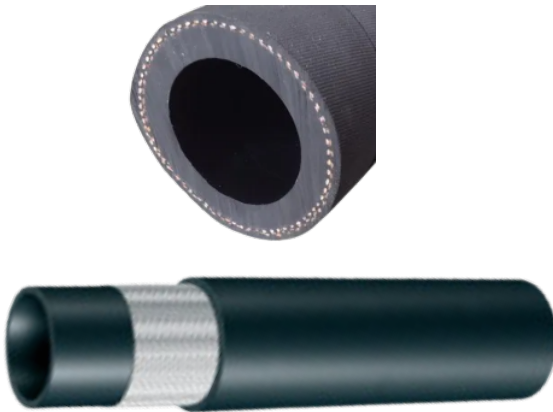
Key Features:

- * Wide range of fluid compatibility
- * High flexibility of hose structure



Application & Fluids:

- * Hydraulics: low pressure lines, return lines
- * Mineral oils, vegetable and rape seed oils, glycol and polyglycol based oils, synthetic ester based oils, oils in aqueous emulsion, water



Continuous Service Temperature Range

-40°C, -40°F
 125°C, 257°F

Tube

Oil resistant synthetic rubber

Reinforcement

One high resistance textile braids

Cover

Weather resistant synthetic rubber

Applicable Specs

EN 854 2TE, ISO 4079 2TE, Exceeds the performance of SAE 100 R6

Type Approvals

DNV-GL

| HOSE SIZE | | | R.O.D. | | O.D. | | MAX W.P. | | BURST | | MIN. BEND | | WEIGHT | |
|-----------|------|--------|--------|------|------|------|----------|------|-------|------|-----------|------|--------|-------|
| DN | dash | inch | mm | inch | mm | inch | bar | psi | bar | psi | mm | inch | g/m | lb/ft |
| 6 | - 4 | 1/4" | | | 13,0 | 0,51 | 75 | 1080 | 300 | 4350 | 40 | 1,57 | 125 | 0,08 |
| 8 | - 5 | 5/16" | | | 14,6 | 0,57 | 68 | 980 | 272 | 3940 | 50 | 1,97 | 150 | 0,10 |
| 10 | - 6 | 3/8" | | | 16,1 | 0,63 | 63 | 910 | 252 | 3650 | 60 | 2,36 | 180 | 0,12 |
| 12 | - 8 | 1/2" | | | 19,2 | 0,76 | 58 | 840 | 232 | 3360 | 70 | 2,76 | 220 | 0,15 |
| 16 | - 10 | 5/8" | | | 23,6 | 0,93 | 50 | 720 | 200 | 2900 | 90 | 3,54 | 290 | 0,19 |
| 19 | - 12 | 3/4" | | | 26,5 | 1,04 | 45 | 650 | 180 | 2610 | 110 | 4,33 | 360 | 0,24 |
| 25 | - 16 | 1" | | | 33,4 | 1,31 | 40 | 580 | 160 | 2320 | 130 | 5,12 | 440 | 0,30 |
| 31 | - 20 | 1.1/4" | | | 41,5 | 1,63 | 35 | 500 | 140 | 2030 | 140 | 5,51 | 650 | 0,44 |



Euroflex SAE 100 R3 / EN 854 3TE Braided Hose

Key Features:

- * Wide range of fluid compatibility
- * High flexibility of hose structure
- * Low bend radii and compactness
- * Exceeds performance of SAE 100 R3

Application & Fluids:

- * Hydraulics: low-medium pressure lines, return lines
- * Mineral oils, vegetable and rape seed oils, glycol and polyglycol based oils, synthetic ester based oils, oils in aqueous emulsion, water



Continuous Service Temperature Range

-40°C, -40°F
 125°C, 257°F

Tube

Oil resistant synthetic rubber

Reinforcement

Two high resistance textile braids

Cover

Weather resistant synthetic rubber

Applicable Specs

EN 854 3TE, ISO 4079 3TE, Exceeds the performance of SAE 100 R3

Type Approvals

DNV-GL



| HOSE SIZE | | | R.O.D | | O.D | | MAX. W.P | | BURST | | MIN. BEND | | WEIGHT | |
|-----------|------|--------|-------|------|------|------|----------|-------|-------|-------|-----------|-------|--------|-------|
| DN | dash | inch | mm | inch | mm | inch | bar | psi | bar | psi | mm | inch | g/m | lb/ft |
| 6 | -4 | 1/4" | - | - | 14.2 | 0.56 | 145 | 2,100 | 580 | 8,410 | 45 | 1.77 | 150 | 0.10 |
| 8 | -5 | 5/16" | - | - | 16.6 | 0.65 | 130 | 1,880 | 520 | 7,540 | 55 | 2.17 | 210 | 0.14 |
| 10 | -6 | 3/8" | - | - | 18.2 | 0.72 | 110 | 1,590 | 440 | 6,380 | 70 | 2.76 | 230 | 0.15 |
| 12 | -8 | 1/2" | - | - | 21.5 | 0.85 | 93 | 1,340 | 372 | 5,390 | 85 | 3.35 | 290 | 0.19 |
| 16 | -10 | 5/8" | - | - | 25.6 | 1.01 | 80 | 1,160 | 320 | 4,640 | 105 | 4.13 | 395 | 0.27 |
| 19 | -12 | 3/4" | - | - | 28.8 | 1.13 | 70 | 1,010 | 280 | 4,060 | 130 | 5.12 | 455 | 0.31 |
| 25 | -16 | 1" | - | - | 35.4 | 1.39 | 55 | 790 | 220 | 3,190 | 150 | 5.91 | 580 | 0.39 |
| 31 | -20 | 1.1/4" | - | - | 42.5 | 1.67 | 45 | 650 | 180 | 2,610 | 190 | 7.48 | 740 | 0.50 |
| 38 | -24 | 1.1/2" | - | - | 49.4 | 1.94 | 40 | 580 | 160 | 2,320 | 240 | 9.45 | 920 | 0.62 |
| 51 | -32 | 2" | - | - | 62.2 | 2.45 | 33 | 470 | 132 | 1,910 | 300 | 11.81 | 1,140 | 0.77 |

Euroflex SAE 100 R7 / EN 855 R7 Braided Hose

Key Features:

- * High flexibility
- * Tight Bend Radius
- * Excellent abrasion resistance



Euroflex SAE 100 R7 / EN 855 R7

Application & Fluids:

- * Hydraulics: medium pressure hydraulic applications, hoisting, hydraulic transmission
- * Mineral & biological oils, ASTM 1, ASTM 3, polyglycol based oils, water, water oil emulsions



Continuous Service Temperature Range

-40°F / 212°F
 -40°C / 100°C

Max. Operating Temperature

100°C, 212°F

Tube

Oil resistant thermoplastic elastomer

Reinforcement

Two polyester braids

Cover

Thermoplastic elastomer with high ozone and abrasion resistance

Applicable Specs

EN 855 R7; SAE 100 R7

Type Approvals

CU-TR

| HOSE SIZE | | | R.O.D. | | O.D. | | MAX W.P. | | BURST | | MIN BEND | | WEIGHT | |
|-----------|------|-------|--------|------|------|-------|----------|------|-------|--------|----------|------|--------|-------|
| DN | dash | inch | mm | inch | mm | inch | bar | psi | bar | psi | mm | inch | g/m | lb/ft |
| 3 | -2 | 1/8 | | | 8.1 | 0.320 | 210 | 3000 | 840 | 24000 | 25 | 1.0 | 57 | 0.04 |
| 5 | -3 | 3/16 | | | 10.3 | 0.405 | 210 | 3000 | 840 | 20000 | 25 | 1.0 | 80 | 0.05 |
| 6 | -4 | 1/4 | | | 12.4 | 0.490 | 190 | 2750 | 760 | 20000 | 32 | 1.3 | 114 | 0.08 |
| 8 | -5 | 5/16 | | | 14.2 | 0.560 | 175 | 2500 | 700 | 17200 | 45 | 1.8 | 142 | 0.10 |
| 10 | -6 | 3/8 | | | 15.7 | 0.620 | 155 | 2250 | 620 | 160000 | 55 | 2.2 | 164 | 0.11 |
| 12 | -8 | 1/2 | | | 19.3 | 0.760 | 140 | 2050 | 560 | 14000 | 77 | 3.0 | 229 | 0.15 |
| 16 | -10 | 5/8 | | | 23.1 | 0.910 | 105 | 1500 | 420 | 11600 | 110 | 4.3 | 295 | 0.20 |
| 20 | -12 | 3/4 | | | 26.4 | 1.040 | 90 | 1300 | 360 | 9200 | 140 | 5.5 | 356 | 0.24 |
| 25 | -16 | 1 | | | 33.3 | 1.310 | 70 | 1000 | 280 | 8000 | 200 | 8.0 | 504 | 0.34 |
| 32 | -20 | 1-1/4 | | | 42.0 | 1.654 | 70 | 1000 | 280 | 6000 | 350 | 12.0 | 737 | 0.50 |



Euroflex SAE 100 R8 / EN 855 R8 Braided Hose

Key Features:

* High pressure hydraulic lines up to 420bar

* Suitable for hydraulic application with increased resistance to abrasion and low change in length

Application & Fluids:

* For use with petroleum, synthetic or water based fluids in hydraulic systems.

* Suitable for Agricultural machinery, Earthmoving, Telescopic booms, Material handling equipments and industrial gases.



Continuous Service Temperature Range

-40°F / 212°F
 -40°C / 100°C (not to exceed 70°C for Air and water based fluids)

Max. Operating Temperature

100°C, 212°F

Tube

Oil resistant thermoplastic elastomer

Reinforcement

1 braid of aramid fibre

Cover

Thermoplastic elastomer with high ozone and abrasion resistance

Applicable Specs

SAE 100 R8 / EN 855 R8

Type Approvals

CU-TR



| HOSE SIZE | | | R.O.D. | | O.D. | | MAX W.P. | | BURST | | MIN.BEND | | WEIGHT | |
|-----------|------|-------|--------|------|------|-------|----------|------|-------|--------|----------|------|--------|-------|
| DN | dash | inch | mm | inch | mm | inch | bar | psi | bar | psi | mm | inch | g/m | lb/ft |
| 3 | -2 | 1/8 | | | 8.1 | 0.320 | 420 | 6000 | 1680 | 24000 | 25 | 1.0 | 57 | 0.04 |
| 5 | -3 | 3/16 | | | 10.3 | 0.405 | 350 | 5000 | 1400 | 20000 | 25 | 1.0 | 87 | 0.06 |
| 6 | -4 | 1/4 | | | 12.4 | 0.490 | 350 | 5000 | 1400 | 20000 | 32 | 1.3 | 118 | 0.08 |
| 8 | -5 | 5/16 | | | 14.2 | 0.560 | 300 | 4300 | 1200 | 17200 | 45 | 1.8 | 147 | 0.10 |
| 10 | -6 | 3/8 | | | 15.7 | 0.620 | 280 | 4000 | 1120 | 160000 | 55 | 2.2 | 170 | 0.11 |
| 12 | -8 | 1/2 | | | 19.3 | 0.760 | 245 | 3500 | 980 | 14000 | 77 | 3.1 | 219 | 0.15 |
| 16 | -10 | 5/8 | | | 23.1 | 0.910 | 200 | 2900 | 800 | 11600 | 110 | 4.4 | 295 | 0.20 |
| 20 | -12 | 3/4 | | | 26.4 | 1.040 | 165 | 2300 | 660 | 9200 | 140 | 5.6 | 372 | 0.25 |
| 25 | -16 | 1 | | | 33.3 | 1.310 | 140 | 2000 | 560 | 8000 | 200 | 8.0 | 511 | 0.34 |
| 32 | -20 | 1-1/4 | | | 42.0 | 1.654 | 100 | 1500 | 400 | 6000 | 350 | 14.0 | 750 | 0.50 |



Euroflex SAE 100 R15 Super / EN 856 R15 Steel Spiral Hose

Key Features:

* High pressure hydraulic lines up to 500bar

* Suitable for hydraulic application with increased resistance to abrasion and low change in length

Application & Fluids:

* For use with petroleum, synthetic or water based fluids in hydraulic systems.

* Suitable for Agricultural machinery, Earthmoving, Telescopic booms, Material handling equipments and industrial gases.



Continuous Service Temperature Range

-40°F / 212°F

-40°C / 100°C (not to exceed 70°C for Air and water based fluids)

Max. Operating Temperature

100°C, 212°F

Tube

Oil resistant thermoplastic elastomer

Reinforcement

4 or 6 high tensile steel spiral

Cover

Thermoplastic elastomer with high ozone and abrasion resistance

Applicable Specs

SAE 100 R15; EN 856 R15; Exceeds the performance of SAE 100 R15

Type Approvals

CU-TR



| HOSE SIZE | | | R.O.D. | | O.D. | | MAX W.P. | | BURST | | MIN.BEND | | WEIGHT | |
|-----------|------|--------|--------|------|------|------|----------|-------|-------|--------|----------|-------|--------|-------|
| DN | dash | inch | mm | inch | mm | inch | bar | psi | bar | psi | mm | inch | g/m | lb/ft |
| 25 | 16 | 1" | 35.1 | 1.38 | 38.1 | 1.50 | 500 | 7,250 | 2,000 | 29,000 | 267 | 10.51 | 2,040 | 1.37 |
| 31 | 20 | 1.1/4" | 46.3 | 1.82 | 49.5 | 1.95 | 500 | 7,250 | 2,000 | 29,000 | 267 | 10.51 | 3,660 | 2.46 |
| 38 | 24 | 1.1/2" | 54.6 | 2.15 | 57.5 | 2.26 | 500 | 7,250 | 2,000 | 29,000 | 315 | 12.40 | 4,700 | 3.16 |
| 51 | 32 | 2" | 68.9 | 2.71 | 72.4 | 2.85 | 500 | 7,250 | 2,000 | 29,000 | 315 | 12.40 | 7,310 | 4.91 |