



onza

AQUILA



nza®

AQUILA

29 2.5

THE EAGLE HAS LANDED

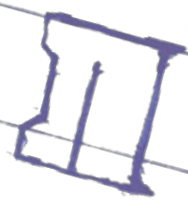
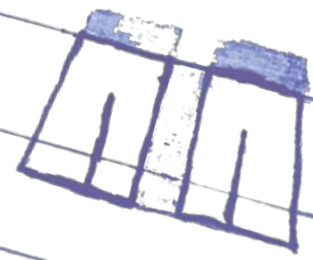
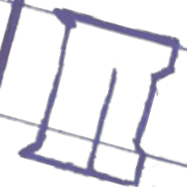
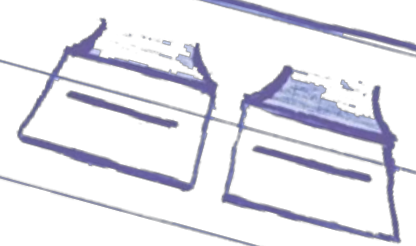
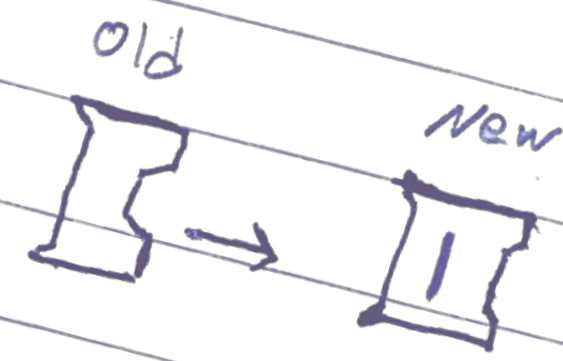
The eagle glides through the skies with agility and grace. Soaring above all else, an eagle will lose altitude at great speed, honing in on their target with precision and determination. There's no stopping them - like gravity pilots on this new tire. Enduro and Downhill tracks of the world, be warned. The AQUILA has landed.

L BEX -

- Fill in Sidewall

Knob gap - Every other
Knob →

- Ramp knobs to the
top

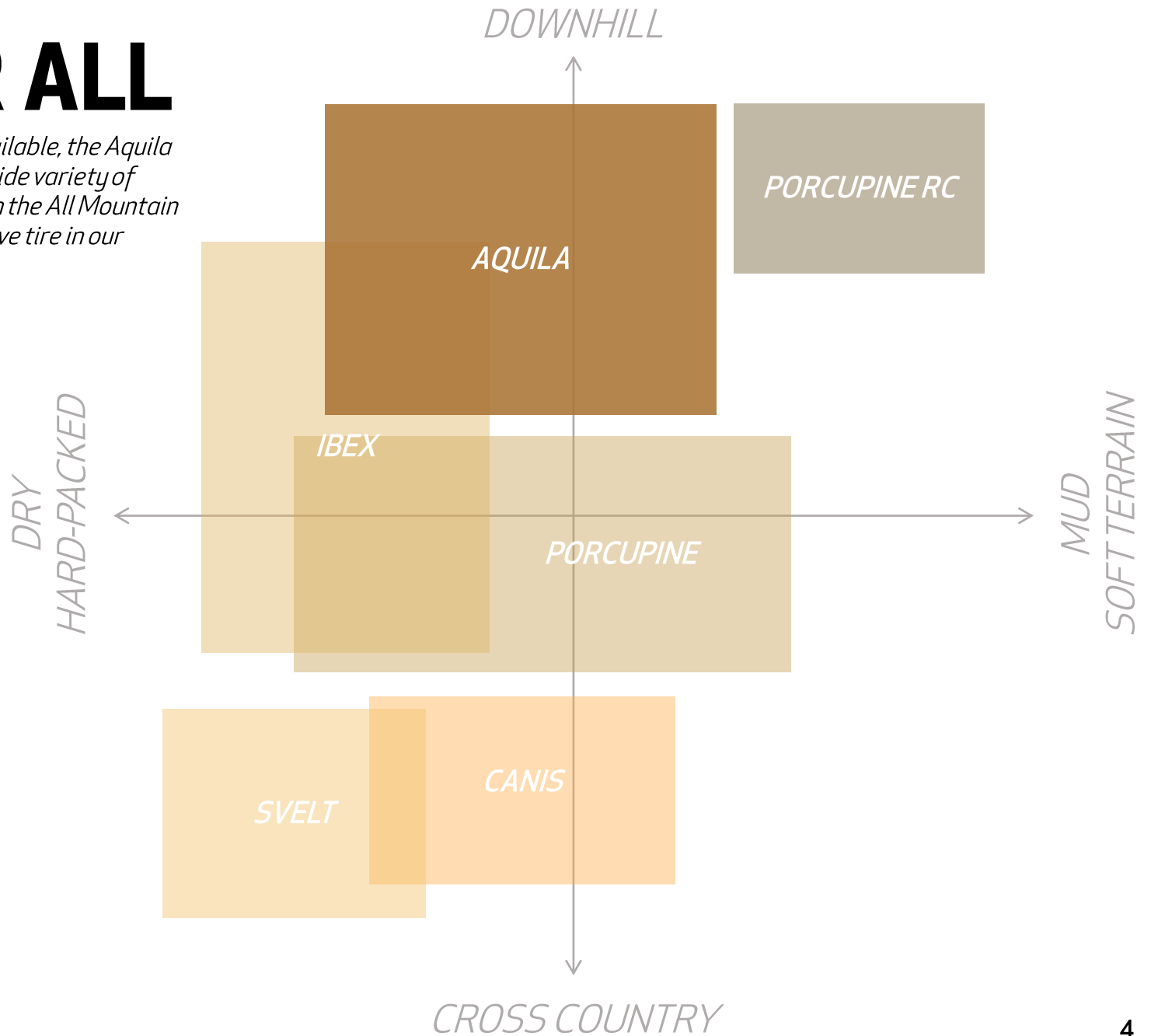


RICH HISTORY

What started a few years back with a World Cup Team sponsoring and a quick n'dirty hotel notepad drawing, quickly developed into one of Downhills most successful tires to date. The extensive product development with some of the world's fastest racers has set the foundation for many of our current and future products.

ONE FOR ALL

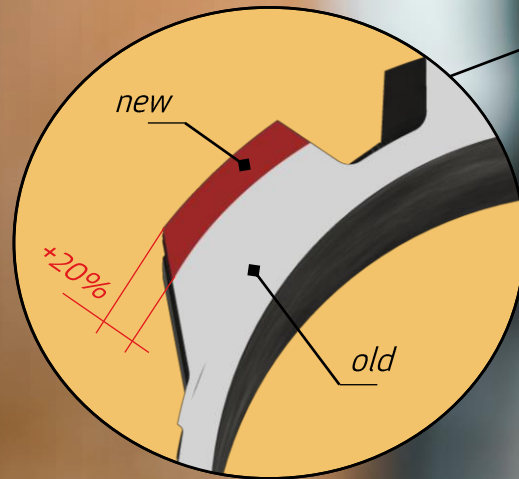
With different casing options available, the Aquila is our allround gravity tire for a wide variety of terrains and bridges the gap from the All Mountain rated Ibex and the most aggressive tire in our lineup, the Porcupine RC.



UPGRADES

Over the years, we gained many great media reviews and rider feedback around the Aquila. Although riders loved the model, we knew there is further room for improvement, so we set out to make this versatile gravity tire even better suited to changing terrain while keeping the outstanding predictability and high rolling speed that our Aquila is known for.

- *More aggressive knobs for better (braking) traction on steep and loose ground*
- *Improved, softer rubber compound for the AM/Enduro version*
- *Modernized sizing: from 2.4 to 2.5*



Sipings improve traction and braking performance in the respective directions

Wide and pronounced center tread for highest braking performance

Ramped knobs for lowest rolling resistance and continuous ground contact

Continuous, uninterrupted channel between lugs for highest predictability

Improved tread height for better traction on steep and loose terrain

CHARACTERISTICS

With further improvements undertaken to underline its great characteristics, the Aquila inspires riders to go faster and to hit new lines with confidence.

STYLE POINTS

Performance is the highest threat of a mountainbike tire, however looks play an important role for many riders as well. Skinwall tires are one of the trademarks of ONZA Tires, so it is no surprise that the new Aquila is offered both, in all black and Skinwall options in all casings.



***SEE YOU
ON THE TRAILS!***



onza

www.onza-tires.com

contact@onza-tires.com

Apex Sports LLC

Tramstrasse 66

CH-4142 Münchenstein