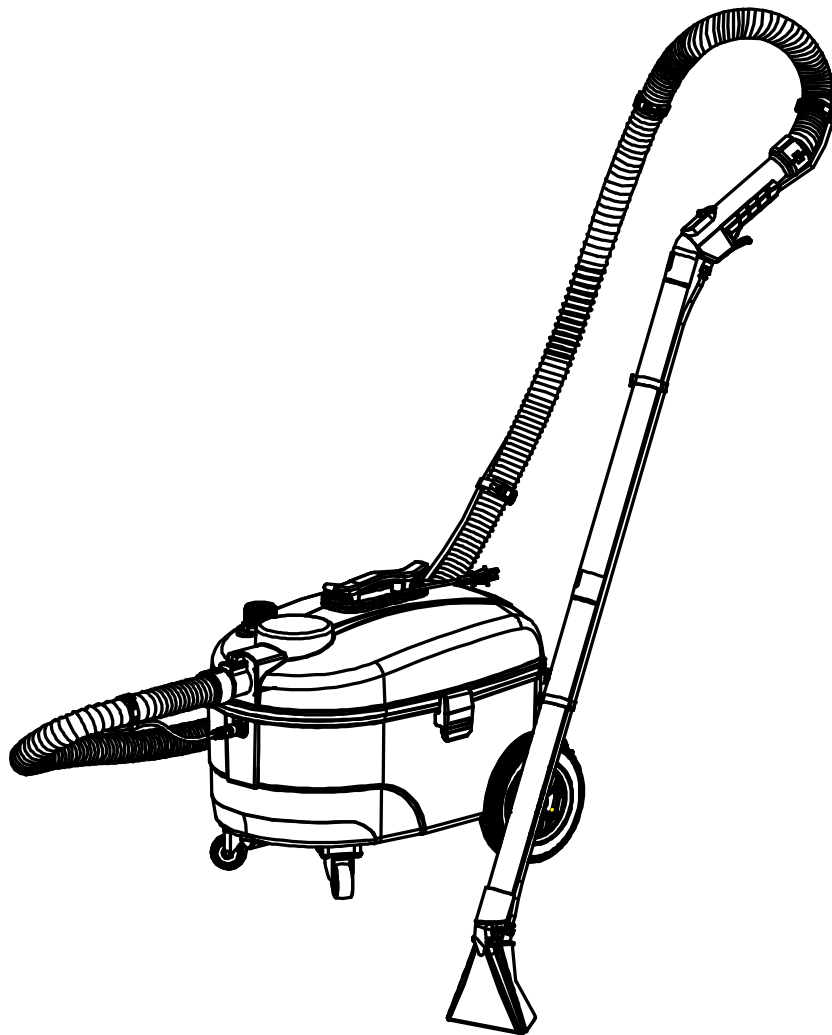




INSTRUCTION MANUAL



Please read the operation instructions and precautions in this Manual before using the Cleaner.



Equipmart Limited

Kiam House, Birchill Road, Knowsley Industrial Park North, Merseyside, L33 7TD.

T: 0151 548 5500 F:0151 548 5599 email: kiamproducts@aol.com www.equip2clean.co.uk

IMPORTANT - READ THIS INFORMATION BEFORE OPERATING THE MACHINE

The Kiam Aquarius Pro Valet is designed for the spray / extraction cleaning of soiled carpets & upholstery. Widely used by professional cleaners, valeting companies and around the home, the Aquarius gives reliable performance & long life.

WARNING

Please ensure that when using electrical equipment, care and attention must be exercised at all times during its use.

Do not use the machine where it is suspected that the carpet or upholstery contains health endangering dust or debris such as asbestos or chemical waste. If this is suspected do not proceed, contact your supervisor or Equipmart Ltd for advice. The machine must only be used for the manufacturer's approved application – i.e. for the cleaning of normal carpet & upholstery dirt. The following instructions contain important information about the machine and safety advice for the operator. Equipment must be operated, serviced and maintained in accordance with the manufacturer's instructions. If in doubt contact the supplier of your machine.

CAUTION

Before using the Kiam Aquarius cleaner - basic safety precautions should be followed including...

- Read all instructions carefully before use.
- **Do not** use where hazardous dust is present.
- **Do not** use in an explosive atmosphere.
- Keep children and unauthorised persons away from the machine when in use.
- **Be careful** when using a machine near the top of stairs to avoid overbalancing.
- **Do not** leave the machine connected to the electricity supply when not in use; always remove the plug from the socket-outlet.
- **Switch off** the machine before removing the plug.
- **Do not** touch or operate the switches with wet hands as this may cause electric shock.
- **Do not** operate the machine with a damaged supply cable or plug, or after the machine malfunctions or is damaged in any way. Contact Equipmart on **0151 548 5500** for repair or service.
- **Do not** pick up oil or other flammable material with the machine
- The plug of the power supply cable must be removed from the socket-outlet before starting cleaning of the machine or undertaking maintenance operations.
- The power supply cable must be regularly inspected for signs of damage. If the power cord is damaged, it must be replaced.
- Keep cleaning solutions away from children and pets at all times
- **Do not** leave the machine running unattended
- This machine should only be used Indoors and should not be used or stored outdoors or in wet conditions.

WARNING – Should water emit from the machine exhaust **switch off immediately** and refer to instructions for **Using the Machine**

CARRYING THE MACHINE

- Detach the hose and wand from machine before carrying. Please ensure that all components, tanks and removable parts are securely fastened, and that the supply cable and plug are coiled up, and not trailing.
- All liquid should be removed from the machine before lifting.
- Take extreme care when moving the machine up or down steps or stairs.

CAUTION – Incorrect lifting techniques may result in personal injury. We advise that the manual handling regulations are followed.

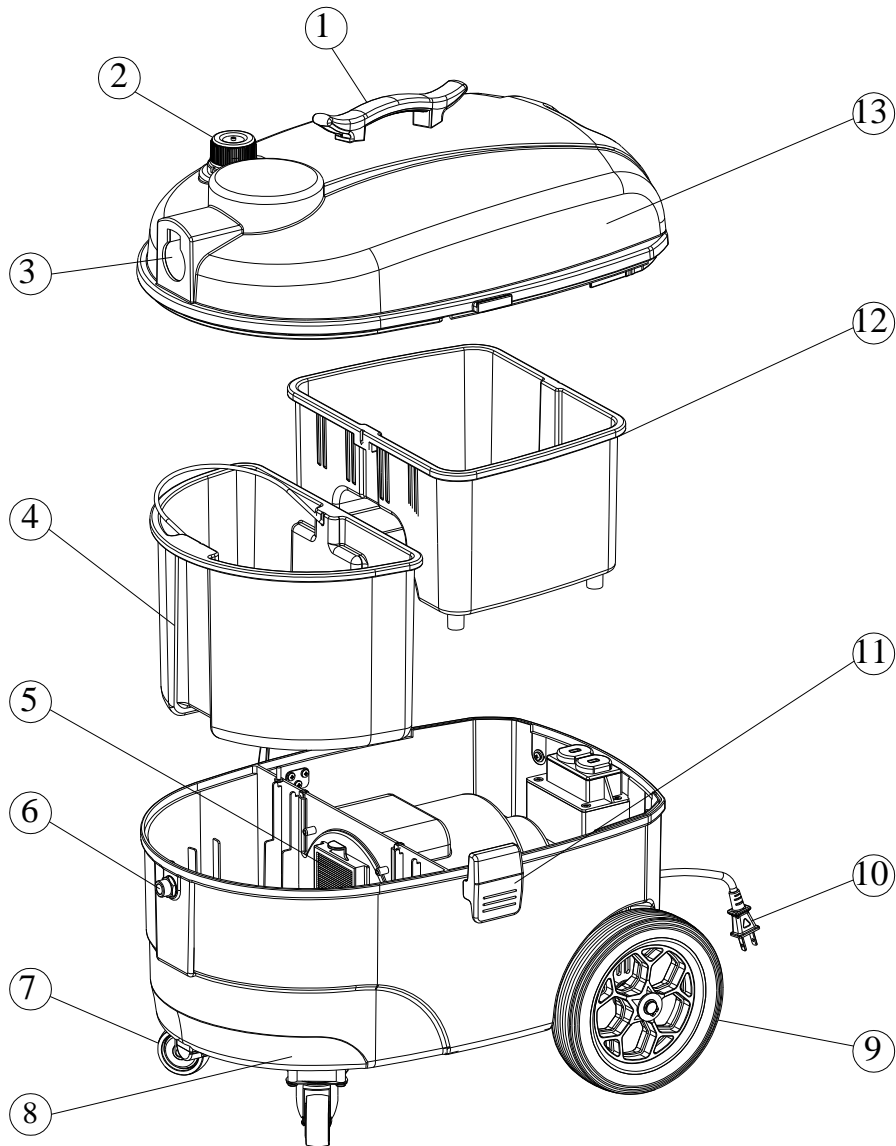
ELECTRICAL SAFETY

- Before connecting the machine to the power supply, refer to the specification label to ensure that your supply voltage is correct for this particular model.
- The supply cable is fitted with a non rewirable plug containing a 13 amp fuse. Should the fuse require replacement it must only be replaced by a 13 amp fuse conforming to BS1362, and the fuse cover must be refitted. If the fuse cover is lost, the plug must not be used until the correct replacement cover is fitted.

IMPORTANT

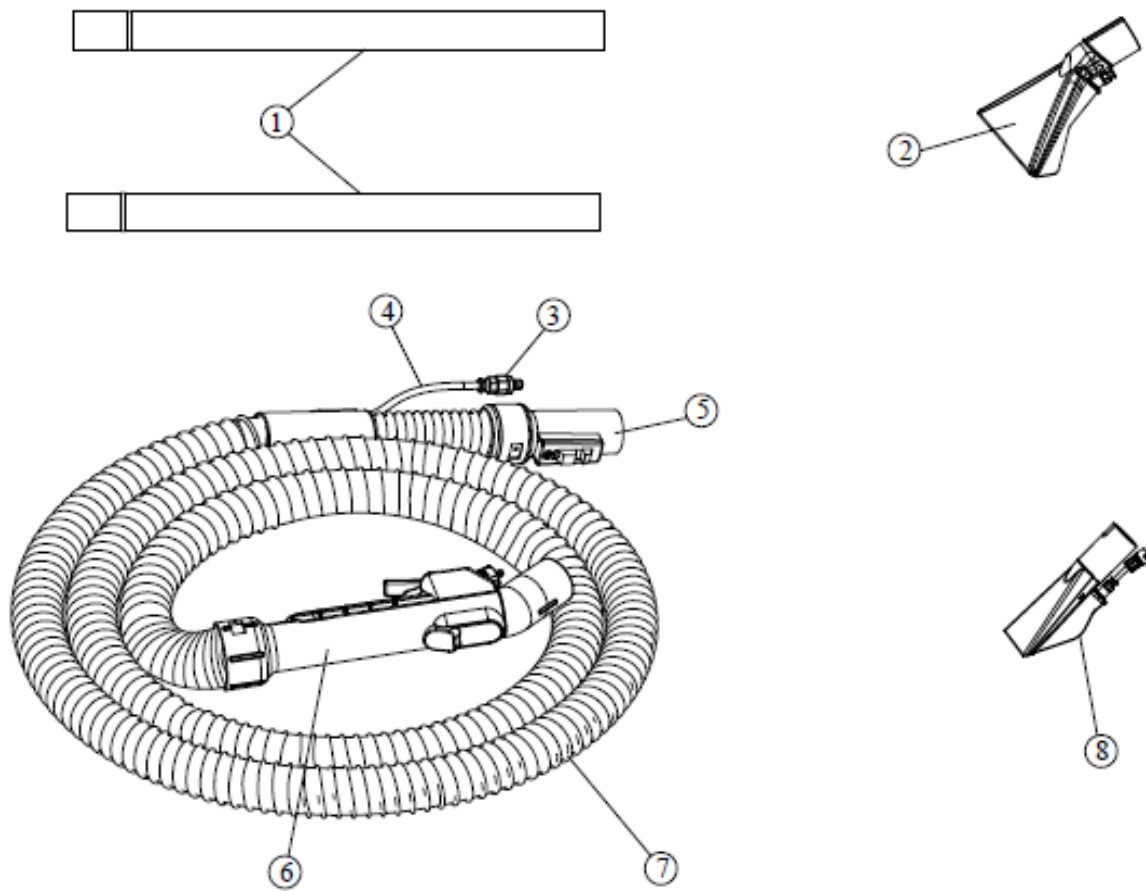
If the supply cable is damaged, it must only be replaced by a special cable available from the manufacturer or an authorised service agent. Should an extension lead be used, ensure cable rating is adequate for the equipment. Do not use an extension lead in coiled condition as this could result in overheating of the cable, and damage to the motor.

Parts Name



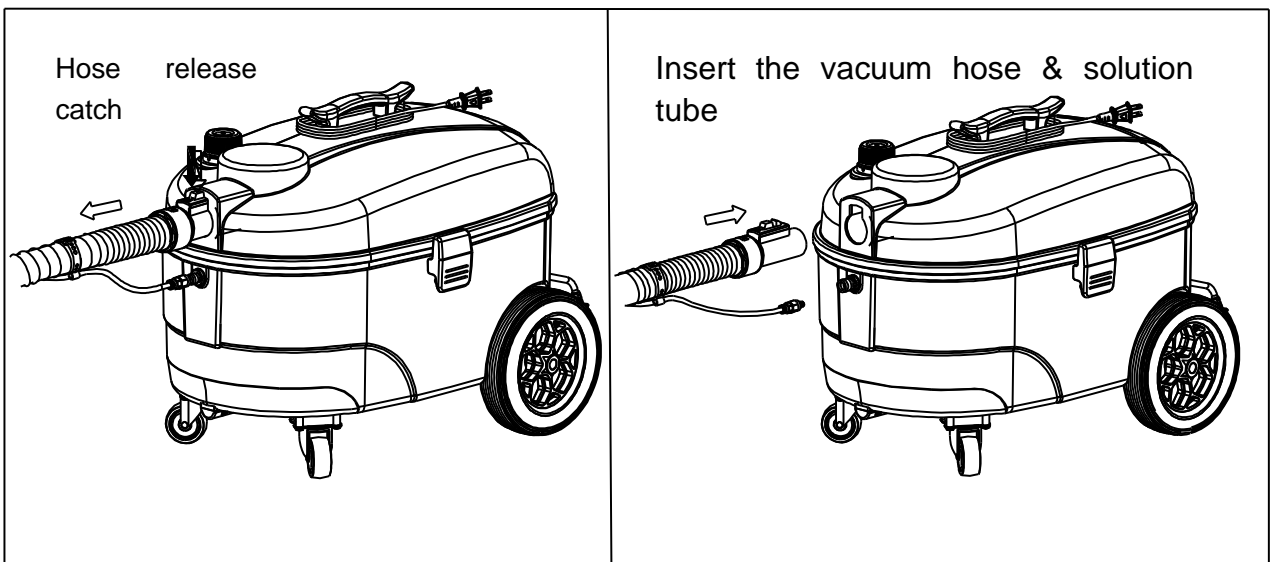
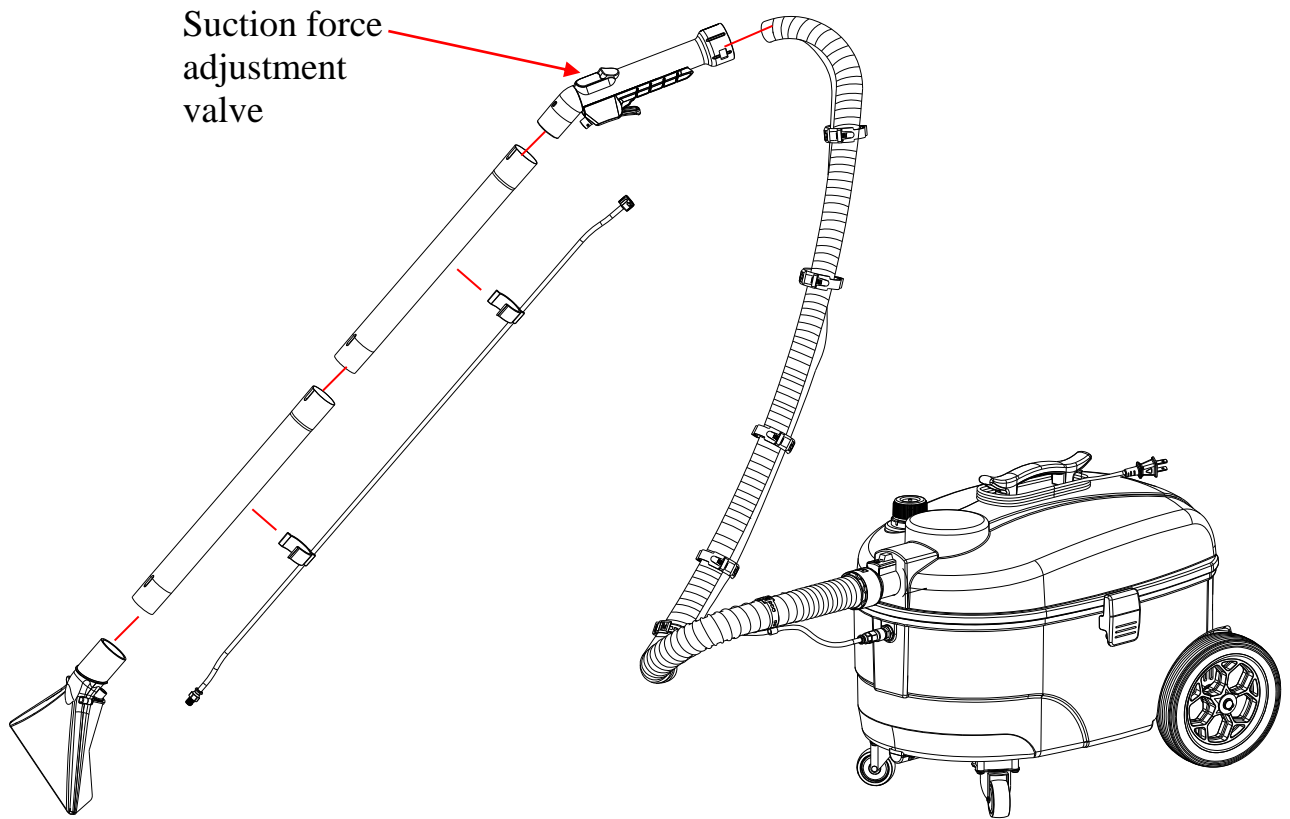
1	Handle	2	Defoamer	3	Hose inlet
4	Waste water tank	5	Filter	6	Quick joint (female)
7	Front wheel	8	Body tank	9	Rear wheel
10	Power cable	11	Clip	12	Clean water tank
13	Body cover				

Accessories & Tools



1	Extension wand	2	Floor Tool	3	Quick joint (male)
4	water tube	5	Connector	6	Bend connector
7	Hose	8	Upholstery tool		

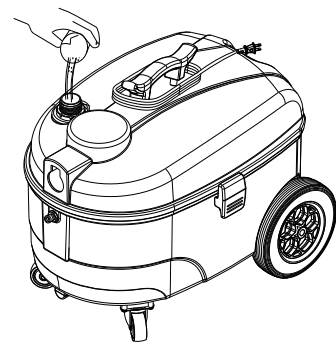
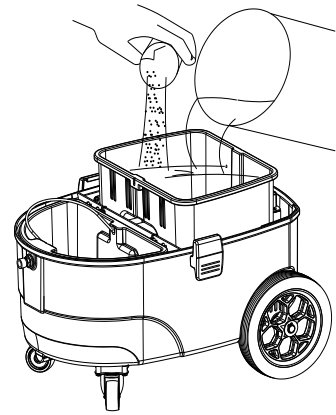
Assembly



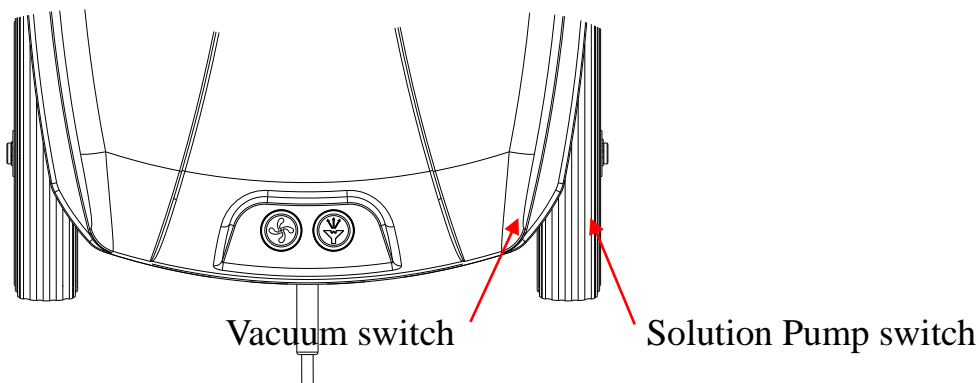
Before Using the Machine

Make sure both tanks are clean and free from debris / hair etc.

- Connect the vacuum hose and the solution hose to the carpet cleaning wand or the upholstery tool.
- Connect the flexible vacuum hose onto the vacuum hose inlet and the high pressure spray hose onto the solution outlet.
- Fill the clean water tank with the low-foaming Kiam detergent and warm water up to 50 C. (NOT BOILING WATER - as boiling water will damage the internal pipework.) Take care to use correct dilution rate for the detergent. Never over fill.
- Fill the anti-foam tank with an appropriate defoamer solution.
- IMPORTANT – If using foaming carpet cleaning chemical, or if foam develops due to residues in the carpet, ensure that an appropriate de-foamer is used in the anti-foam tank.
- Incorrect chemicals could cause damage to the carpets being cleaned or cause the machine to malfunction..

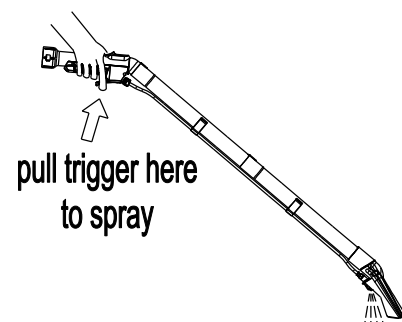


Operating Controls



TO START THE MACHINE

- Plug the machine into the 240 volt mains supply.
- Ensure the slider on top of the trigger unit is in the closed position.
- Switch on the unit solution pump spray switch and / or vacuum switch. These two switches can be used independently.
- Squeeze the trigger to spray solution onto the upholstery / carpet. Move the floor wand back and forth evening maintaining the pressure of the wand / tool onto the surface to be cleaned.



CLEANING TIPS...

To dry the surface being cleaned more thoroughly, complete the cleaning with a second pass with the vacuum (and no spray). Never soak the textile being cleaned while spraying.

NEVER overfill the waste tank – as it may overflow, and damage the motor. (This can only occur, if you refill the solution tank WITHOUT emptying the waste tank.)

CLEANING UPHOLSTERY & CARPETS

Firstly...

- Vacuum carpet thoroughly to remove any residual dust or debris.
- **Colour fastness** - Always test carpet / upholstery on a small inconspicuous area before carrying out full clean. If the area shows signs of leaching, the colours may not be fast, and the carpet should not be wet cleaned.
- Areas of heavy carpet soiling can be removed more easily if first spot-cleaned with a concentrated cleaning solution.
- The time taken to clean will depend upon the thickness of the carpet and the degree of dirt in the area being cleaned.

CLEANING STAIRS

Use the stair / upholstery tool for cleaning instead of the floor wand assembly. When cleaning on stairs take great care to ensure that machine is stable and cannot overbalance, possibly causing injury to either operator or third party. **Do not** clean any more than twice. Carpets may shrink if they are over-wet or not properly fixed down.

DRAINING & CLEANING

- When you have finished cleaning, hold the spray nozzle over the removable recovery tank and squeeze the spray trigger until the remaining solution has been released. With the pump switched off. The spray hose can now be disconnected.
- Now disconnect the vacuum hose.
- Empty the solution tank and rinse clean.
- Empty the recovery tank and rinse clean.
- Clean nozzles and hoses.

STORAGE

- Always unplug, empty, wipe down and dry the machine after use.
- Wrap supply cord around the handle of the machine ensuring that the plug is not trailing on the floor. Store the machine in a dry indoor area only.

MAINTENANCE & SERVICING OF THE MACHINE

WARNING - Before undertaking maintenance or repairs to the machine, switch off machine and unplug from the electricity supply. The machine requires minimal maintenance apart from the following checks by the operator.

- Supply cable - Regularly inspect sheath, plug and cable anchorage for damage or loose connection.
- Vacuum filter – Check the vacuum filter is clean and replaced if necessary.
- Vacuum head – Check and remove any debris or lint build-up from the head.
- Solution tank – Check filters are clean and undamaged. A damaged or missing filter must be replaced or damage to pump head and spray jet could occur.
- Spray jet – Check jet for blockage and full spray pattern. Blow through jet to clean. Do not use a pin, as this could damage the jet.

IMPORTANT – All other servicing & repairs should only be performed by a Kiam engineer or Authorised Kiam Service centre. **Tel: 0151 548 5500.**

CLEANING SOLUTION / DETERGENTS

Only use Kiam recommended detergents to ensure the best cleaning results.

AQ12 TABLETS – concentrated detergent tablets, easily dissolved for one solution tank measure

AQ9 DETERGENT POWDER – available in 5 kg & 10 kg tubs.

Both products contains, detergents, degreasers, bacteriacide, optical brightners & a low foaming agent.

AFTER-SALES SERVICE

Should you require after sales service, please contact Equipmart on 0151 548 5500, who will arrange service. Repairs and servicing of Kiam products should only be performed by trained staff. Improper repairs can cause considerable damage and invalidate your warranty.

GUARANTEE

Your product is guaranteed for one year from the date of original purchase, against defects in materials or workmanship during manufacture. Within the guarantee period we undertake, at our discretion, to repair or replace free of charge to the purchaser, any part found to be defective, subject to the following conditions.

CONDITIONS

1. For claims under this guarantee contact the supplier from whom you purchased the product, who will arrange the appropriate action. Do not initially return the product as this could result in transit damage.
2. Neither Kiam nor its distributors shall be liable for any incidental or consequential loss.
3. Claims made under the terms of the guarantee must be supported by the original invoice issued at the time of sale, and the machine Serial Number.
4. This guarantee does not cover any of the following:
 - Periodic maintenance, and repair or replacement of parts due to normal wear and tear.
 - Damage caused by operator abuse, misuse or neglect, accident, or the fitting of other than genuine Kiam parts.
 - Defects in other than genuine Kiam parts, or repairs, modifications or adjustments performed by other than a Kiam service engineers or authorised service centre.
 - Costs and risks of transport relating directly or indirectly to the guarantee of this product.(i.e. Return to Base Warranty)
 - Consumable items and wear parts.
5. This guarantee is governed by the laws of England.
6. This guarantee does not affect your statutory rights, nor your rights against the supplier arising from their sales or purchase contract.

TROUBLE-SHOOTING GUIDE

FAULT	REASON	SOLUTION
The spray pump and vacuum does not work	Power failure	Check the main fuse, the power supply cord and the plug.
No spray or the spray is not even	Spray nozzle blocked Solution tank empty Solution feed filter	Check the spray pipe and nozzle Is there water in the tank? If there is water in the tank, wait for a couple of seconds for the pump to build up pressure. If the tank is empty, fill it as indicated. The filter in the clean water tank, the pipe or the nozzle may be blocked. Switch off the unit and perform maintenance.

	blockage	
The vacuum power falls.	The recovery tank may be full.	Empty recovery tank.

Specifications

Model:	Aquarius Pro Valet
Rated voltage:	230V
solution tank capacity:	6.5L
waste water tank:	7L
Rated current:	5.5A
Motor power:	1100W
Airflow:	46.1 l/sec
Pump power:	50W
Pump pressure:	4 bar / 58 psi
Flow rate:	2 l/min
Vac Hose length:	3 metres
Noise level:	78 dB(A)
Maximum air flow:	1.8m ³ /min
Maximum water lift:	2000~2100H ₂ O mm
Body dimensions:	365Wx530Dx430H(mm)
Weight empty:	10 Kg

DECLARATION OF CE CONFORMITY

<p>D CE Konformitätserklärung</p> <p>Wir erklären in alleiniger Verantwortung, dass dieses Produkt mit den folgenden Normen oder normativen Dokumenten übereinstimmt: siehe unten</p>	<p>GB CE Declaration of conformity</p> <p>We declare under our sole responsibility that this product is in conformity with the following standards or standardization documents: see below</p>	<p>F CE Déclaration de conformité</p> <p>Nous déclarons sous notre propre responsabilité que ce produit est en conformité avec les normes ou document normalisés: Voir ci-dessous</p>
<p>I CE Dichiarazione di conformità</p> <p>Assumendone la piena responsabilità, dichiariamo che il dotto è proconforme alle seguenti normative ed ai relative documenti: vedere sotto</p>	<p>E CE Declaración de conformidad</p> <p>Declaramos bajo nuestra sola responsabilidad que este producta está en conformidad con las normas o documentos normalizados siguientes: ver abajo</p>	<p>HR</p> <p>Potvrda o suglasnoti</p> <p>Izjavljujemo pod punom odgovornošću da je ovaj proizvod u skladu sa sljedećim standardima ili normama: vidi ispod</p>

EN 55014-1 ; EN 55014-2 ; EN 61000-3-2; EN 61000-3-3 ; EN 61335-1 ;
EN 60335-02-69 ; EN 50366

EQUIPMART LTD.

Kiam House
Birchill Road
Knowsley
Merseyside L33 7TD
Tel: 01515485500

www.equip2clean.co.uk

