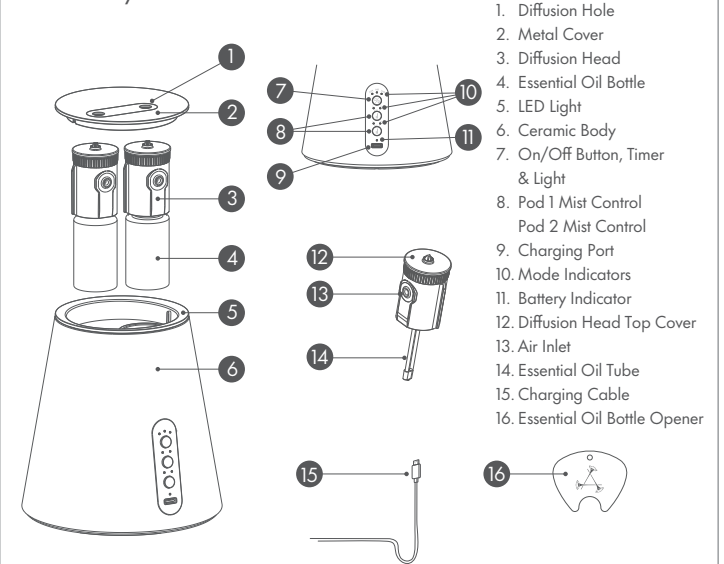
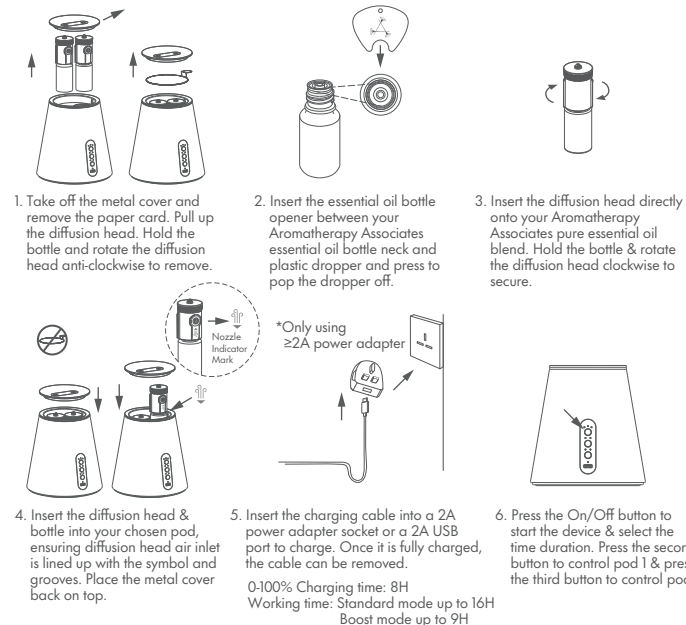


Overview

Main body



Operation Instructions



Note:

- For best results & to be eligible for warranty, use only with Aromatherapy Associates pure essential oil blends. Artificial fragrance or impurities may harm the unit.
- Always unplug the product from the electrical socket when not in use.
- Do not remove the diffusion head or move the device whilst actively diffusing.
- Keep on a stable and flat surface. Carpet, cushions or other uneven surfaces might affect the ventilation system.
- The diffusion head tube can be cut if too long for the essential oil bottle. Ensure to remove tube from the diffusion head and cut the flat end from the top as the bottom part is slanted for better oil absorption.
- Do not use a 1A power adapter as the input power might not be enough to charge the diffuser.

Setting Instructions

On/Off, Timer & Light

- Press the first button once to turn on. The default setting is 30 mins (30M indicator) diffusion from pod 1 (pod 2 will stay off).
- Press the button a second time to run for 1 hour (1H indicator).
- Press the button a third time to run for 3 hours (3H indicator).
- Press the button a fourth time to switch the Atomiser Connect off.
- Hold the button for 3 seconds to turn off the light. Hold for another 3 seconds to turn light back on.

Mist Output

Pod 1

- "S" standard mode will automatically be selected when unit is turned on. (13s on/47s off)
- Press once to switch to "B" boost mode. (4 mins on/6 mins off)
- Press the button a second time to turn off pod 1.
- Press the button a third time to turn on pod 1 with "S" Standard mode.

Pod 2

- "S" standard mode will automatically be selected when unit is turned on. (13s on/47s off)
- Press once to switch to "B" boost mode. (4 mins on/6 mins off)
- Press the button a second time to turn off pod 2.
- Press the button a third time to turn on pod 2 with "S" standard mode.

* Memory function – Keep your last favourite setting preference when you turn on/off the device. The memory will stay until the Atomiser Connect runs out of battery.

Battery

- Charging (red indicator light).
- Full Battery (green indicator light).
- Low Battery (flashing indicator light).
- * Standard mode is recommended. Boost mode should only be used once a day.

Bluetooth App Connection

- To download the app scan the QR code below or search **Aromatherapy Associates: The Atomiser Connect** on the IOS or Google app store.
- Turn on the device to connect to the app for the first time.
- Once you are connected, the light will flash twice to signal connection.
- Hold the second button for 5 seconds to remove the existing Bluetooth connection.
- Only one device can be connected to the Atomiser Connect at any one time.
- Use the app to change the settings, create diffusion schedules, use the guided breathing feature and learn more about our pure essential oil blends.

Press the pod 1 & pod 2 buttons simultaneously to activate a factory reset. This will remove all saved schedules that have been created through the app.



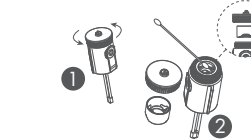
Cleaning & Maintenance



1. Fill an empty Aromatherapy Associates pure essential oil bottle or the original bottle provided with rubbing alcohol under 75% concentration.



2. Replace the lid on the bottle and insert into the Atomiser Connect and turn on to diffuse for 5 minutes on standard mode.



3. Rotate the nozzle cap anti-clockwise and take out the inner cap. Dip a cotton swab in the rubbing alcohol and use it to gently wipe inside the nozzle.

When you put it back, make sure the inner lid cap hole is aligned with the nozzle air inner hole.

Note:

- Never use with rubbing alcohol over 75% concentration as it may damage your Atomiser Connect.
- Alcohol is flammable. Ensure room is well-ventilated to prevent the risk of fire.
- For best results, clean the diffusion head 1-2 times per week.
- Use a different diffusion head for each pure essential oil blend. Two are provided with the machine and are available to be purchased individually on our website. If the same diffusion head is to be used for different essential oil blends, we recommend cleaning the diffusion head and changing the oil tube before switching.
- Different pure essential oil blends will diffuse at different rates due to the molecular make-up of the essential oils. For example, blends that contain more viscous oils such as Sandalwood will diffuse at a slightly slower rate.
- Use only with pure natural essential oil blends to prevent damaging the unit components.
- This product contains battery, make sure to use the device within 0°C - 40°C, otherwise it might affect the battery life and safety.
- Make sure to charge the device once within 3 months, it is recommended to maintain a certain amount of battery level or it might affect battery health.







AROMATHERAPY ASSOCIATES

YOUR PUREST AROMATHERAPY EXPERIENCE

Mandatory Safety

- Never use the product for purposes other than those listed in this manual.
- Read the instruction manual before using this product.
- Remove all external packaging before use.
- Use only the charging cable in the package to avoid damage to the product.
- When unplugging the cable, set your hand on the machine instead of pulling the cord directly.
- If the unit will not be used for an extended period or needs to be relocated, unplug the power adaptor, take out the oil bottle and clean the unit/bottle before storage.
- Avoid moving the unit while in use.
- This product is not a toy, keep out of reach of children.
- The precautions listed in this manual are to ensure safe and proper use of this product by the user and avoid any danger or loss that might occur to the user or others.
- This appliance contains battery that are non-replaceable.
- The light source of this luminaire is not replaceable; when the light source reaches its end of life the whole luminaire shall be replaced.
- "WARNING" contains important safety instructions. Be sure to follow these instructions.

Warning

-  • This appliance can only be used by children aged 8 years and above and persons with reduced physical, sensory or mental capabilities or lack of experience and knowledge if they have been given supervision or instruction concerning the use of the appliance in a safe way and understand the hazards involved. Children should be properly supervised to ensure they will not play with the appliance. Cleaning and user maintenance should not be done by children without supervision.
-  • Stop using the product immediately and unplug the device if you smell smoke, burning or any unusual smells, if you hear any unusual sounds or if any other anomalies occur.
-  • Do not modify, fix or dismantle this product, as fire, electric shock or damage may occur.
-  • When the product is at the end of its life, we recommend disposal at a collection point for the recycling of electrical and electronic equipment, rather than with household waste.
- The appliance is only to be used with the recommended vaporizing medium. The use of other substances may give rise to a toxic or fire risk.



- This device complies with Part 15 of the FCC Rules. Operation is subject to the following two conditions:
 - (1) This device may not cause harmful interference, and
 - (2) This device must accept any interference received, including interference that may cause undesired operation.
- When this product remains unused for a long period of time, the main unit must be unplugged from the USB, electrical socket and the oil bottle. Otherwise electric shock malfunction may occur.
- This product must be disconnected from the power sources before cleaning and maintenance.
- Please avoid dripping essential oils onto the exterior of the product or onto any furniture. If any essential oils are spilt, wipe off immediately to avoid discoloration of the exterior of the product or the furniture.
- This product is not a medical device. Directly inhaling the mist from the spout is not recommended.
- Individuals who are pregnant or suffering from a medical condition should seek advice before use. Stop using the product and open the windows for ventilation if you start to feel uncomfortable.



- Essential oils are highly concentrated and should always be handled with care, including the amount that is used.
- Do not handle the main unit and outlet with wet hands, or let water or other liquids spill onto them, as this may result in electric shocks.
- To avoid fire, electric shock, injury or damage, do not place the product in the areas listed below :
 - Environments exposed to direct sunlight, to high temperatures, and keep away from sources of ignition.
 - Pressurised objects and combustibles.
- It is not recommended to use viscous single essential oils, such as Sandalwood or Vetiver on their own (not in a blend) as they could clog the machine.
- Always ensure the room is well-ventilated and that pets or children have the option to leave the room should they choose to.
- Only use Boost mode for 30 minutes at a time when time is tight. Boost mode should only be used once a day.

Product Dimensions

Product Name:	The Atomiser Connect	Main unit weight:	1100g
Model code:	BL-082	Coverage Area:	Up to 120m ²
Product Size:	Ø130mm(D) x 135mm(H)	Environment:	Indoor
Material:	Ceramic + Metal + PP	Run Time:	30mins /1H/3H
Power:	3.6V = 5200mAh 18.72Wh, input: 5V = 2A 10W	Design:	USA
Manufacturer:	Bloomy Lotus LLC	Made in China	

Product Warranty

Thank you for your purchase. This product carries a limited 12-month warranty from proof of purchase on manufacturer defects. Please contact Aromatherapy Associates Customer Services on info@aromatherapyassociates.com or call +44 (0)2085697030 for enquiries or product maintenance:

Proof of purchase will be required. Warranty does NOT apply for:

- Damage of accessories due to extended use/depreciation over time.
- Damage due to abuse or improper use of the product.
- Damage of non-household use. (i.e. commercial use, natural disaster such as flood.)
- Failure to provide proof of product damage and purchase.

We reserve the right to take a final decision of free product maintenance provided within mentioning period and any other conditions.

Product name: _____ Model no.: _____

Batch no: _____ Point of purchase: _____

Date of purchase: _____



Troubleshooting

If you experience unsatisfactory operations, please follow our troubleshooting guidelines listed below.

Symptom	Possible Cause	Solution
The Atomiser Connect does not turn on	Charging cable/USB is not connected correctly.	Disconnect the charging cable/USB and re-connect carefully.
	Using a 1A powder adapter to charge the Atomiser Connect.	Change to a ≥2A power adapter to charge the Atomiser Connect.
	The Atomiser Connect has run out of battery.	Plug the charging cable into the charging port and into a power socket or USB port to charge.
The Atomiser Connect is on but there is no scent.	The diffusion head is not attached correctly.	Remove the diffusion head and reinstall correctly. Make sure the diffusion head air inlet is lined up with the symbol and grooves.
	The oil bottle is empty or the oil level is lower than the end of the oil tube.	Change to a new essential oil bottle, add more essential oil into the bottle or change the essential oil tube.
	Using a single essential oil that is too viscous.	Clean the diffusion head & swap to an Aromatherapy Associates pure essential oil blend.
	The essential oil tube is not attached securely to the diffusion head.	Reinsert the essential oil tube into the diffusion head correctly.
	Selecting the wrong pod for diffusion.	Ensure you've selected a pod that has a pure essential oil blend inserted inside.



AROMATHERAPY ASSOCIATES



THE ATOMISER CONNECT
YOUR PUREST AROMATHERAPY EXPERIENCE

AROMATHERAPY DIFFUSER USER MANUAL
PLEASE READ CAREFULLY BEFORE USE