

ENTRANCE SIGN

ASSEMBLY SERIES



Glen Village

GOLF COURSE

MAINTENANCE

8001 BOCA POINTE DRIVE

COMMUNITY ASSOCIATION

MAINTENANCE

7599 BOCA POINTE DRIVE

CONTACT US

1-800-705-1446

signaturestreetscapes.com

info@signaturestreetscapes.com

MODERN ASSEMBLY

ITEM ID: Modern Assembly - MED | 60" X 42" SINGLE SIDED - NON REFLECTIVE

PRICE AS SHOWN

\$1,938.50

* SEE PAGE 8 FOR ADDITIONAL MATERIAL INFORMATION



CONCRETE FOOTER (OPTIONAL)

POST PROFILE

POST PROFILE

24" POST BURIAL DEPTH RECOMMENDED

ADDITIONAL SIZES

PRICES BELOW REFLECT:

NON-REFLECTIVE GRAPHICS & SINGLE-SIDED ASSEMBLIES

SM	48" x 36" 8' POST HEIGHT	Modern Assembly - SM	\$ 1,644.00
MED	60" x 42" 8' POST HEIGHT	Modern Assembly - MED	\$ 1,938.50
LG	72" x 42" 10' POST HEIGHT	Modern Assembly - LG	\$ 2,272.50
XL	84" x 46" 10' POST HEIGHT	Modern Assembly - XL	\$ 2,586.50

POST PROFILE

4" x 8'-0" POLE (x2)

4" x 4" SQUARE POLE
WALL THICKNESS: .125
EXTRUDED ALUMINUM: ALLOY 6063

FINIAL: FN-1244 (x2)



IMPERIAL FINIAL FOR 4" x 4" POLE
HEIGHT: 2.25"
WIDTH: 5.50"
CAST ALUMINUM: ALLOY 319

* fastens with (3) 1/4-20 x 3/8" stainless steel set screws provided



BASE: BS-44J-24 (x2)

EMPIRE BASE (1 pc.)
FITS 4" x 4" POLE
HEIGHT: 24.00"
WIDTH: 11.00"
CAST ALUMINUM: ALLOY 319

* fastens with (3) 1/4-20 x 3/8" stainless steel set screws provided

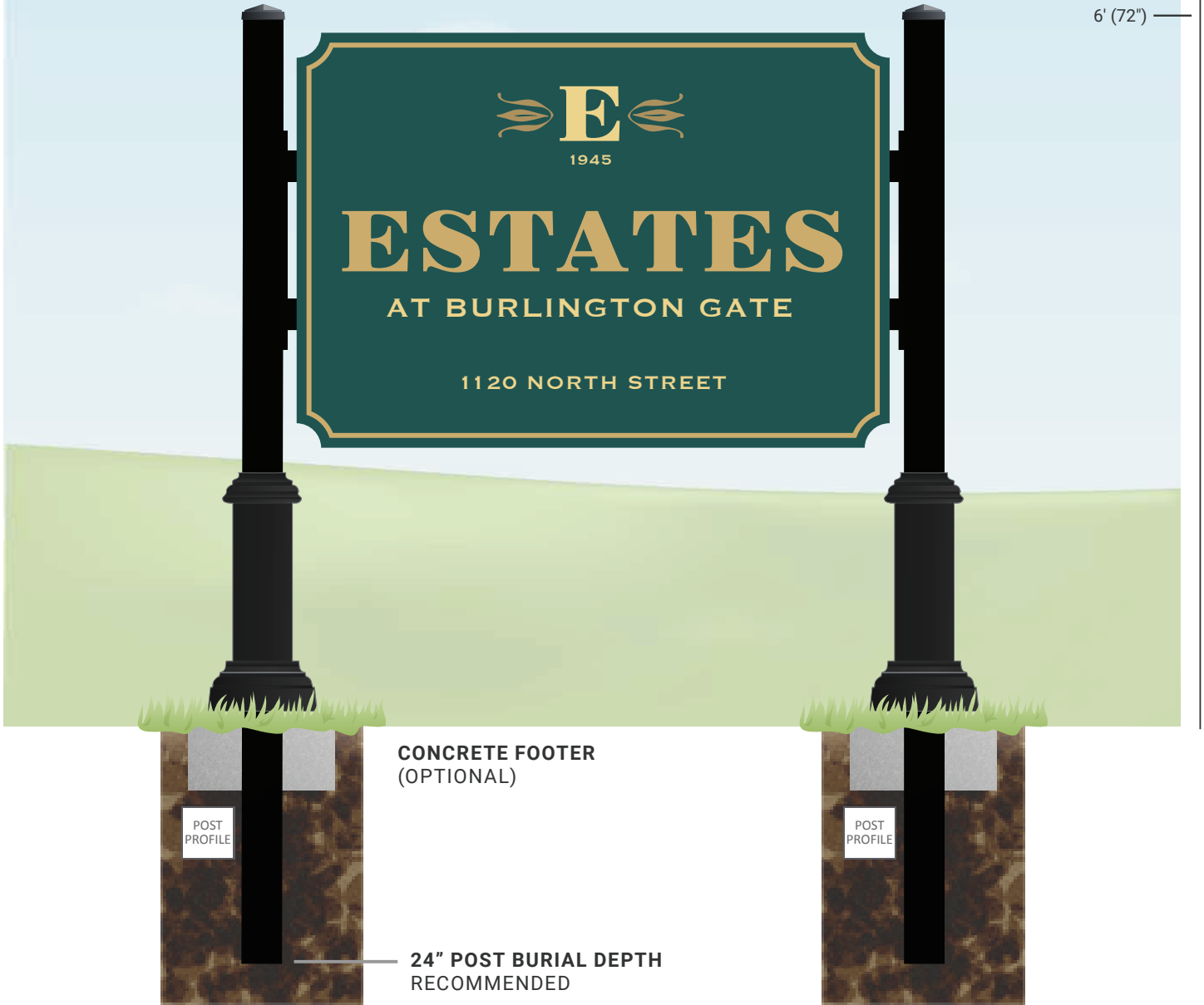
ESTATE ASSEMBLY

ITEM ID: Estate Assembly - MED | 60" X 42" SINGLE SIDED - NON REFLECTIVE

PRICE AS SHOWN

\$1,938.50

* SEE PAGE 8 FOR ADDITIONAL MATERIAL INFORMATION



4" x 8'-0" POLE (x2)
 4" x 4" SQUARE POLE
 WALL THICKNESS: .125
 EXTRUDED ALUMINUM: ALLOY 6063

FINIAL: FN-1144 (x2)
 NEWEL FINIAL FOR 4" x 4" POLE
 HEIGHT: 1.50"
 WIDTH: 4.375"
 CAST ALUMINUM: ALLOY 319
 * fastens with (3) 1/4-20 x 3/8" stainless steel set screws provided

BASE: BS-44J-24 (x2)
 EMPIRE BASE (1 pc.)
 FITS 4" x 4" POLE
 HEIGHT: 24.00"
 WIDTH: 11.00"
 CAST ALUMINUM: ALLOY 319
 * fastens with (3) 1/4-20 x 3/8" stainless steel set screws provided

ADDITIONAL SIZES

PRICES BELOW REFLECT:
 NON-REFLECTIVE GRAPHICS & SINGLE-SIDED ASSEMBLIES

SM	48" x 36" 8' POST HEIGHT	Estate Assembly - SM	\$ 1,644.00
MED	60" x 42" 8' POST HEIGHT	Estate Assembly - MED	\$ 1,938.50
LG	72" x 42" 10' POST HEIGHT	Estate Assembly - LG	\$ 2,272.50
XL	84" x 46" 10' POST HEIGHT	Estate Assembly - XL	\$ 2,586.50

OAKMONT ASSEMBLY

ITEM ID: Oakmont Assembly - MED | 60" X 42" SINGLE SIDED - NON REFLECTIVE

PRICE AS SHOWN

\$1,632.50

* SEE PAGE 8 FOR ADDITIONAL MATERIAL INFORMATION



CONCRETE FOOTER (OPTIONAL)

24" POST BURIAL DEPTH RECOMMENDED

ADDITIONAL SIZES

PRICES BELOW REFLECT:

NON-REFLECTIVE GRAPHICS & SINGLE-SIDED ASSEMBLIES

Size	Dimensions	Post Height	Assembly Name	Price
SM	48" x 36"	8' POST HEIGHT	Oakmont Assembly - SM	\$ 1,338.50
MED	60" x 42"	8' POST HEIGHT	Oakmont Assembly - MED	\$ 1,632.50
LG	72" x 42"	10' POST HEIGHT	Oakmont Assembly - LG	\$ 1,966.50
XL	84" x 46"	10' POST HEIGHT	Oakmont Assembly - XL	\$ 2,280.50

4" x 8'-0" POLE (x2)

4" DIAMETER FLUTED POLE
WALL THICKNESS: .125
EXTRUDED ALUMINUM: ALLOY 6063

FINIAL: FN-0104 (x2)

ACORN FINIAL FOR 4" OD POLE
HEIGHT: 8.25"
WIDTH: 5.50"
CAST ALUMINUM: ALLOY 319

* fastens with (3) 1/4-20 x 3/8" stainless steel set screws provided

BASE: BS-04F (x2)

MINI-AMERICANA (1 pc.)
FITS 4" OD POLE
HEIGHT: 10.25"
WIDTH: 9.00"
CAST ALUMINUM: ALLOY 319

* fastens with (3) 1/4-20 x 3/8" stainless steel set screws provided

CAPE CHARLES ASSEMBLY

ITEM ID: Cape Charles Assembly - MED | 60" X 42" SINGLE SIDED - NON REFLECTIVE

PRICE AS SHOWN

\$1,859.50

* SEE PAGE 8 FOR ADDITIONAL MATERIAL INFORMATION



4" x 8'-0" POLE (x2)

4" DIAMETER SMOOTH POLE
WALL THICKNESS: .125
EXTRUDED ALUMINUM: ALLOY 6063

FINIAL: FN-TH08 (x2)

CORINTHIAN COLUMN ROUND FOR 4" OD POLE
HEIGHT: 1.25"
WIDTH: 6.00"
CAST ALUMINUM: ALLOY 319

* fastens with (3) 1/4-20 x 3/8" stainless steel set screws provided

BASE: BS-04H (x2)

LEGEND BASE (1 pc.)
FITS 4" OD POLE
HEIGHT: 18.65"
WIDTH: 13.16"
CAST ALUMINUM: ALLOY 319

* fastens with (3) 1/4-20 x 3/4" stainless steel set screws provided

ADDITIONAL SIZES

PRICES BELOW REFLECT:

NON-REFLECTIVE GRAPHICS & SINGLE-SIDED ASSEMBLIES

SM	48" x 36" 8' POST HEIGHT	Cape Charles Assembly - SM	\$ 1,565.00
MED	60" x 42" 8' POST HEIGHT	Cape Charles Assembly - MED	\$ 1,859.50
LG	72" x 42" 10' POST HEIGHT	Cape Charles Assembly - LG	\$ 2,193.50
XL	84" x 46" 10' POST HEIGHT	Cape Charles Assembly - XL	\$ 2,507.50

HERITAGE ASSEMBLY

ITEM ID: Heritage Assembly - MED | 60" X 42" SINGLE SIDED - NON REFLECTIVE

PRICE AS SHOWN

\$1,632.50

* SEE PAGE 8 FOR ADDITIONAL MATERIAL INFORMATION



4" x 8'-0" POLE (x2)
 4" DIAMETER FLUTED POLE
 WALL THICKNESS: .125
 EXTRUDED ALUMINUM: ALLOY 6063

FINIAL: FN-0204 (x2)
 GLOBE FINIAL FOR 4" OD POLE
 HEIGHT: 7.00"
 WIDTH: 5.25"
 CAST ALUMINUM: ALLOY 319
* fastens with (3) 1/4-20 x 3/8" stainless steel set screws provided

BASE: BS-04F (x2)
 MINI-AMERICANA (1 pc.)
 FITS 4" OD POLE
 HEIGHT: 10.25"
 WIDTH: 9.00"
 CAST ALUMINUM: ALLOY 319
* fastens with (3) 1/4-20 x 3/8" stainless steel set screws provided

ADDITIONAL SIZES

PRICES BELOW REFLECT:
 NON-REFLECTIVE GRAPHICS & SINGLE-SIDED ASSEMBLIES

SM	48" x 36" 8' POST HEIGHT	Heritage Assembly - SM	\$ 1,338.00
MED	60" x 42" 8' POST HEIGHT	Heritage Assembly - MED	\$ 1,632.50
LG	72" x 42" 10' POST HEIGHT	Heritage Assembly - LG	\$ 1,966.50
XL	84" x 46" 10' POST HEIGHT	Heritage Assembly - XL	\$ 2,280.50

POSTS

3" OR 4" SQUARE



8', 10', 12' or 13'-6" LENGTH
WALL THICKNESS: .125
EXTRUDED ALUMINUM: ALLOY 6063

3" OR 4" FLUTED



8', 10', 12' or 13'-6" LENGTH
WALL THICKNESS: .125
EXTRUDED ALUMINUM: ALLOY 6063

3" OR 4" SMOOTH



8', 10', 12' or 13'-6" LENGTH
WALL THICKNESS: .125
EXTRUDED ALUMINUM: ALLOY 6063

FINIALS

ACORN



3" ROUND (FN-0103) - \$41.50
4" ROUND (FN-0104) - \$49.00

GLOBE



3" ROUND (FN-0203) - \$41.50
4" ROUND (FN-0204) - \$49.00

CORINTHIAN COLUMN ROUND



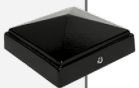
3" ROUND (FN-TH07) - \$39.00
4" ROUND (FN-TH08) - \$43.50

BALL CAP



3" SQUARE (FN-1033) - \$30.50
4" SQUARE (FN-1044) - \$37.00

NEWEL



3" SQUARE (FN-1133) - \$23.00
4" SQUARE (FN-1144) - \$28.50

IMPERIAL



3" SQUARE (FN-1233) - \$41.50
4" SQUARE (FN-1244) - \$45.50

CORINTHIAN COLUMN SQUARE



3" SQUARE (FN-TH09) - \$39.00
4" SQUARE (FN-TH10) - \$42.50

BASES

MINI AMERICANA



3" ROUND (BS-03F) - \$113.50
4" ROUND (BS-04F) - \$113.50

FITS 3" & 4" ROUND POST PROFILE

STREETSCAPE



3" ROUND (BS-03A) - \$275.50
4" ROUND (BS-04A) - \$275.50

FITS 3" & 4" ROUND POST PROFILE

COLONIAL



3" ROUND (BS-03B) - \$319.00
4" ROUND (BS-04B) - \$319.00

FITS 3" & 4" ROUND POST PROFILE

CORINTHIAN



3" ROUND (BS-03C) - \$162.00

FITS 3" ROUND POST PROFILE

HANOVER



3" ROUND (BS-03E) - \$124.50

FITS 3" ROUND POST PROFILE

LEGEND



3" ROUND (BS-03H) - \$232.50
4" ROUND (BS-04H) - \$232.50

FITS 3" & 4" ROUND POST PROFILE

EMPIRE



36" SQUARE (BS-44J-36) - \$297.00
24" SQUARE (BS-44J-24) - \$270.00
18" SQUARE (BS-44J-18) - \$254.00
5" SQUARE (BS-44J-5) - \$108.00

FITS 4" SQUARE POST PROFILE

MATERIALS

1 NON-REFLECTIVE (NR)

ORACAL® 651 INTERMEDIATE CALENDERED VINYL FILM

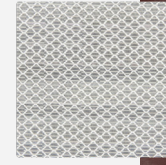
2.5 mil, calendered PVC film. Gloss finish. Used for Building Signs, Vehicle Graphics, Window Graphics and Decals.



1 REFLECTIVE (HIP)

3M HIP HIGH INTENSITY PRISMATIC

Meets middle grade performance standards and ASTM D4956 Type IV. Used for reflective traffic and road signs. Performance warranted for up to 10 years.



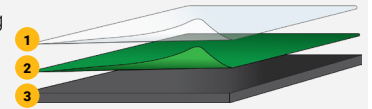
2 3M TM SERIES ELECTROCUT FILM

3M™ ElectroCut™ Film is a transparent, acrylic film with pressure sensitive adhesive for application over reflective sheeting. This material is highly transparent and gives equal or better retro-reflective performance than sheetings screened with transparent inks.



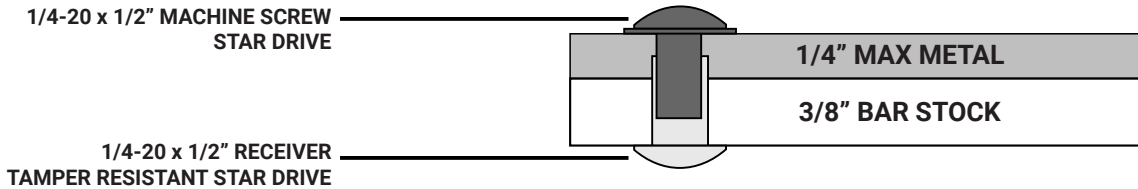
3 MAX METAL ALUMINUM

MAXMETAL is an aluminum composite material comprised of two, pre-painted .15mm aluminum panels bonded to a solid polyethylene core. It's lighter in weight and more durable than both MDO and solid aluminum panels, plus it resists scratching and denting better than wood panels. Can be cut to any shape and sizes.

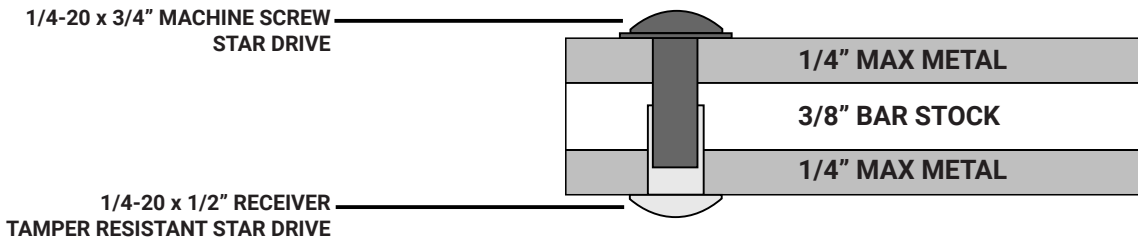


SINGLE - OR - DOUBLE SIDED

SINGLE-SIDED ENTRANCE SIGN



DOUBLE-SIDED ENTRANCE SIGN



HOW TO SEND ART WORK

Please provide us with any text, special characters, colors, logos & layout instructions and our design team will create a full color rendering. Once the final rendering is approved we will begin the order. Our printing process creates custom designs directly from the approved proof, eliminating the possibilities for misspellings or errors

ACCEPTABLE FILE TYPES : .ai .pdf .eps .svg .jpg

Please note that vector files are preferred. If you do not have vector graphics, a high resolution .jpg is acceptable. Please note design time may result in additional charges. If you are in need of additional graphic info, you can reach out to us or check us out online at:

<https://signaturestreetscapes.com/pages/signature-design-service>

For more information regarding acceptable file types, please follow this link : [Signature Streetscapes Art File Guide](#)

FOR CUSTOM SHAPES & SIZES PLEASE CALL : 1 (800) 705-1446