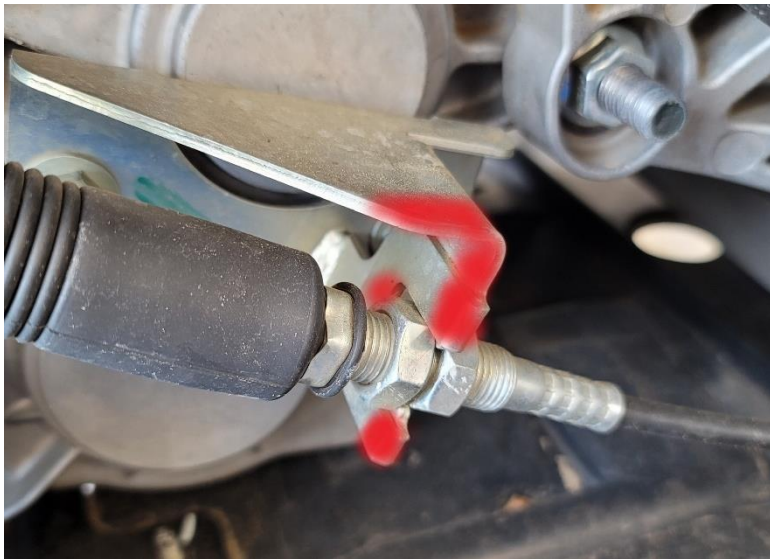
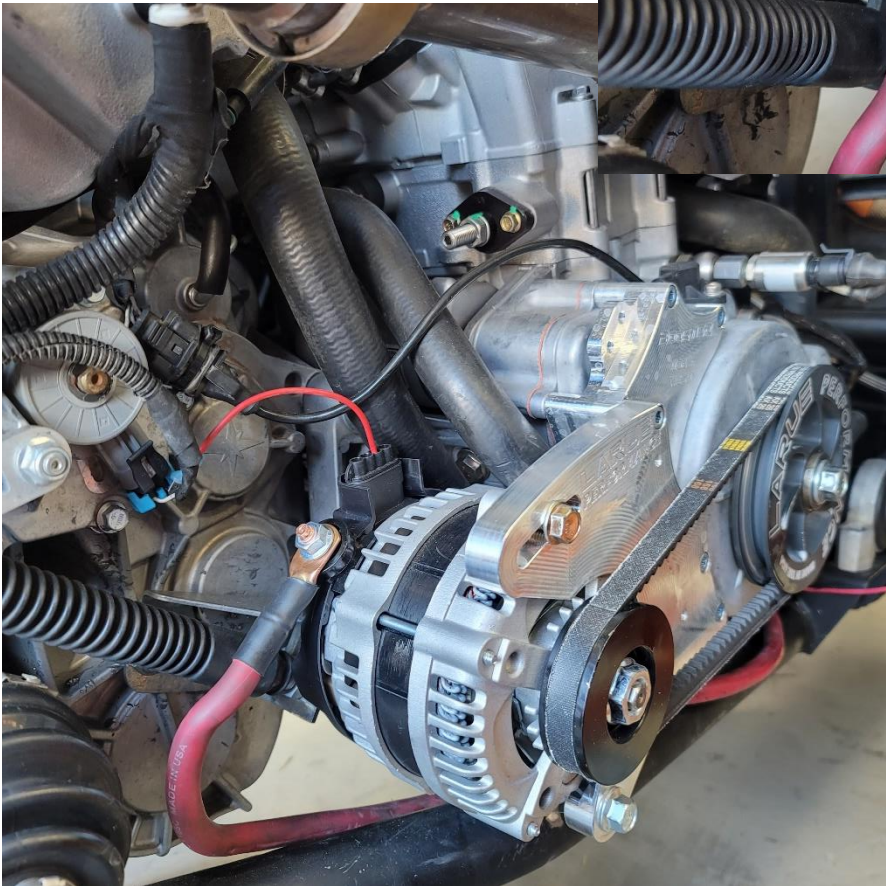
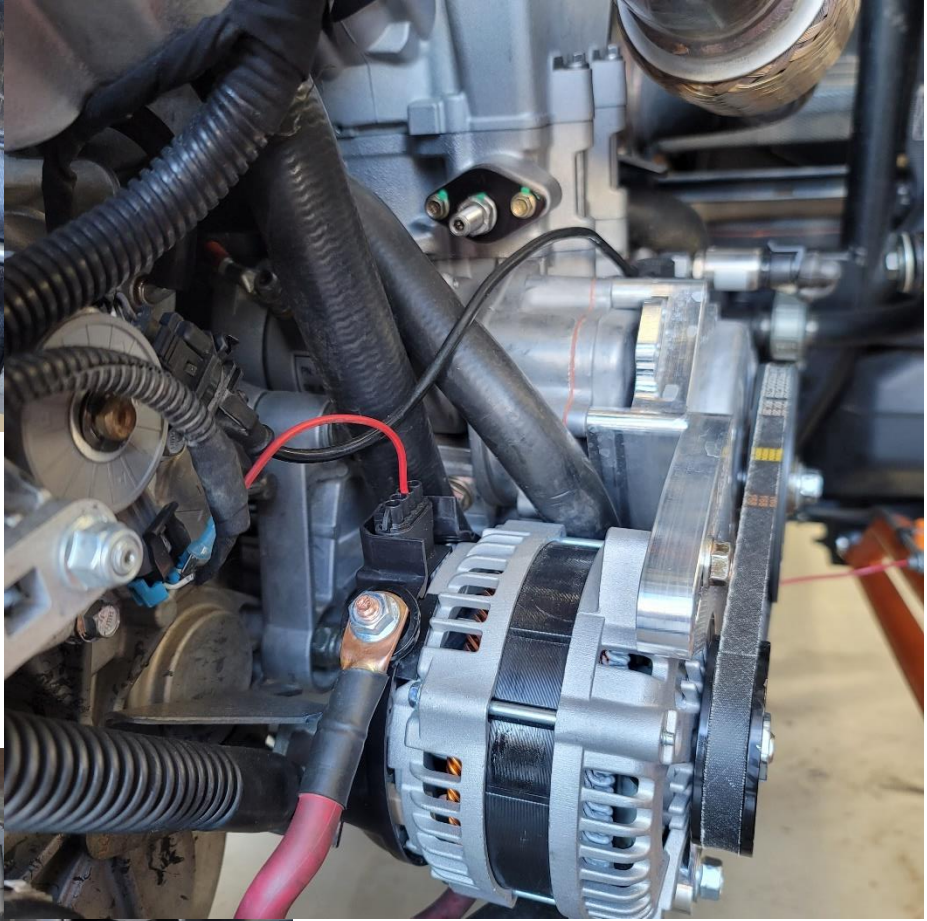


**For the 195-amp Alternator Kit only.**

The shift cable bracket needs to be removed and modified for the bigger alternator to fit.

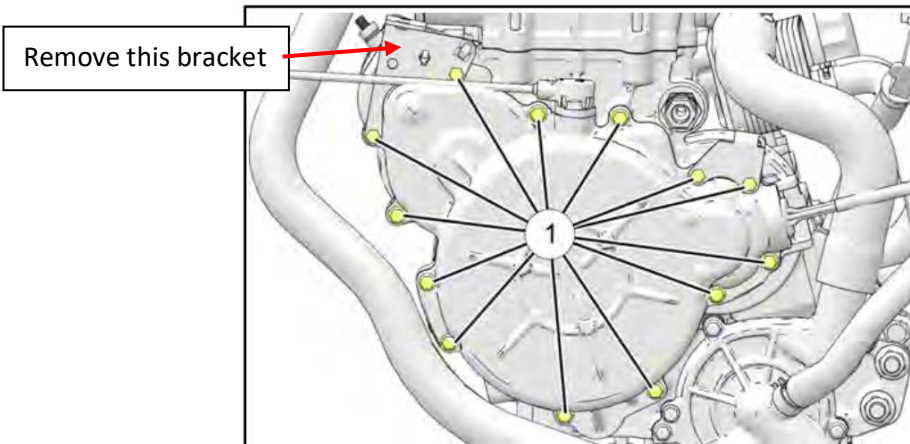
- Loosen the two jam nuts holding the cable on the bracket.
- Remove the two 15mm bolts that hold the bracket to the transmission.
- Using a grinder/hacksaw/bandsaw grind or cut down the bracket to 2" – 2 1/8" (modifications highlighted in red on photo below)
- Using a grinder/hacksaw/bandsaw grind or cut the shift cable groove so the cable fits flush with the modified bracket. (modifications highlighted in red on photo below)





## For all RZR Alternator Kits

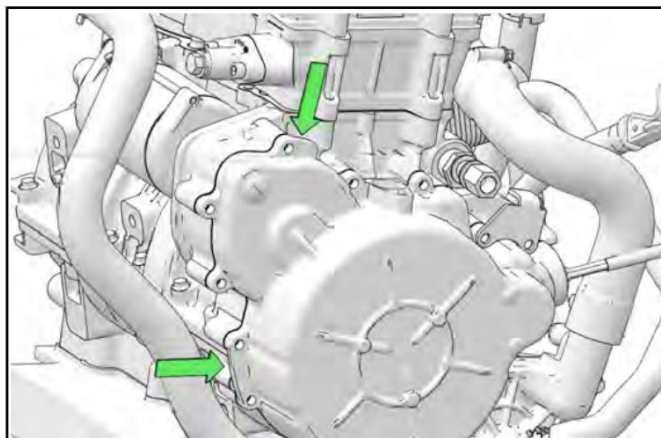
1. Make sure the stator cover and surrounding area is clean.
2. Jack the vehicle up on the passenger side so the vehicle is at an angle. This will help prevent oil from leaking out when the stator cover is removed.
3. Unplug the voltage regulator.
4. Zip-tie up any hoses that may be in your way of the stator cover.
5. Remove the stock stator cover – 13 screws 8mm socket



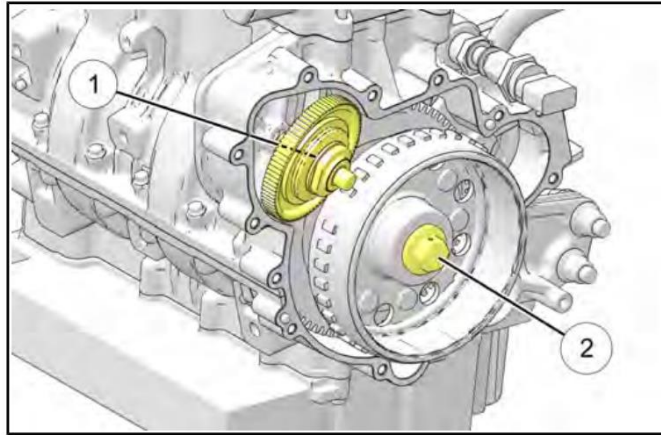
### **⚠ CAUTION**

The flywheel contains powerful magnets. Use caution when removing and installing the stator cover. **DO NOT** place fingers between cover and crankcase at any time during the removal / installation process or injury could result.

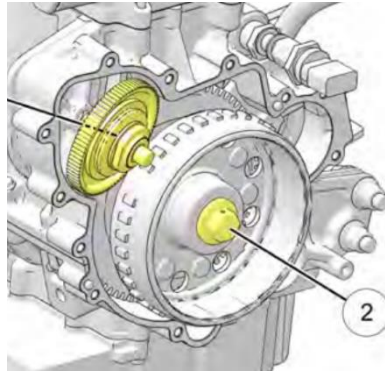
- a. Carefully pry the stator cover off the engine using the two pry areas as shown below.



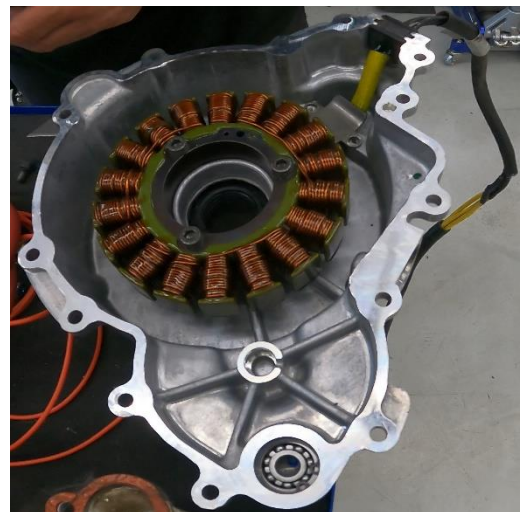
- b. The starter gear (1) may fall out of place when you take the stator cover off, make sure the gear gets put back in place.



6. Remove as much of the old gasket as possible. Do not reuse old gasket.
7. Remove the fly wheel bolt (2) – 22mm
- a. If you do not have a big enough impact, you will have to strap the clutch to a radius rod.



8. Remove the stator from the stock ignition cover.
- a. 3 stator bolts (5mm Allen) & 2 wire bracket bolts (4mm Allen)
9. Clean old Loctite off bolts.
10. Install stator into the new modified cover included with the LaRue Alternator Kit.
- a. Apply new Loctite to the 3 stator bolts (5mm Allen at 9 ft-lb) & 2 wire bracket bolts (4mm Allen at 6 ft-lb).
- b. Lube the bearing



11. Install the stator cover

- a. Bolts 5 & 11 in the torque sequence are replaced with the two 55mm bolts included in the kit. Bolts 3,4,9, & 10 in the torque sequence are replaced with the four 75mm bolts included in the kit. These bolts are used to bolt on the alternator bracket. We recommend you use red Loctite for these bolts.

## STATOR COVER INSTALLATION

1. Apply gasket tack adhesive to help hold gasket in place during assembly.
2. Install a new stator cover gasket over alignment pins.

### ⚠ CAUTION

The flywheel contains powerful magnets. Use caution when removing and installing the stator cover. DO NOT place fingers between cover and crankcase at any time during the removal / installation process or injury could result.

3. Install stator cover and thirteen screws. Torque screws in sequence to specification.



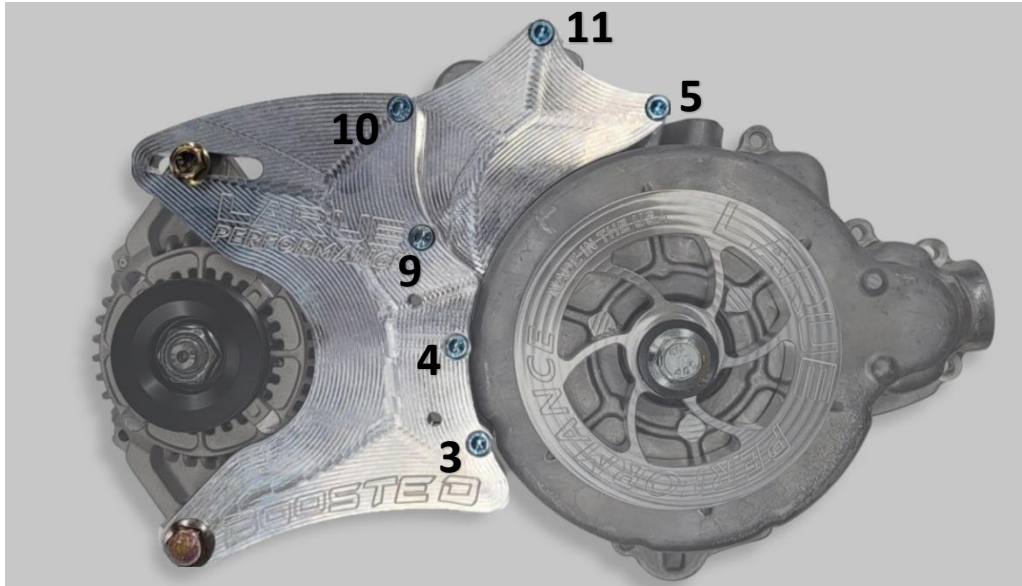
### TORQUE

Stator Cover Screws:  
**9 ft-lb (12 Nm)**

12. Plug the voltage regulator back in.

### 13. Install Alternator Kit Bracket

- a. Remember bolts 5 & 11 in the torque sequence are replaced with the two 55mm bolts included in the kit. Bolts 3,4,9, & 10 in the torque sequence are replaced with the four 75mm bolts included in the kit. We recommend you use red Loctite for these bolts.



14. Install alternator to the bracket using the 2 bolts provided in the kit.
15. Grease the pulley spacer and seal where it will be inserted.
16. Apply red Loctite on the pulley bolt.
17. Hold the clutch with a strap or a clutch holding tool to keep it from moving.
18. Install Pulley and the bolt with the washer. Torque bolt (17mm socket) to 100 ft-lb
19. Install belt, do not over tighten. Allow a quarter to half inch flex.
20. Main Cable goes from the alternator to the positive (+) on the battery.
21. Install the black negative (-) ground wire to the battery then to a 6mm bolt on the engine (with the 195-amp alternator kit only).
22. Small Excite wire goes from the alternator to switched 12V key on accessory.
  - a. Find an accessory wire such as the lights and connect into that wire with the T-tap hardware provided.
23. Heat cycle the engine and make sure to check the oil level, add oil if needed.

\*Please refer to your Polaris RZR instruction manual for further in-depth instructions if needed.

