

# INSTALLATION INSTRUCTIONS

## HELLO!

Before you begin prep the walls using a clean, damp cloth. Clean the surface and allow to dry fully. If the wall is not finished smoothly, wall texture may transmit thru the paper. Grab a friend to help with this two person project!

## RECOMMENDED TOOLS

- Ladder
- Level
- New Sharp Cutting Tool
- Pencil
- Straight Edge Ruler
- Sponge an/or Soft Cloth
- 1 Extra Helper



- 1 Each panel is numbered at the bottom. Panel #1 will begin on the lefthand side of the wall and panels continue to the right sequentially. Layout the panels to ensure you have enough material to cover your wall.



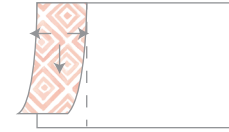
- 2 Start by measuring from top left corner of wall to 48" inward and mark an "x" with a pencil.



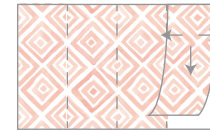
- 3 Use a level starting at the 48" mark to ensure you are getting an accurate vertical line, then draw a straight line all the way down with your level.



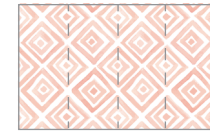
- 4 Align the right side of Panel #1 to the level line you drew.



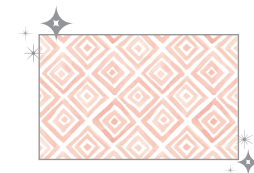
- 5 A few inches at a time, peel back the paper and install in a downward motion, ensuring you are lining up the panel along the right level line. Smooth out bubbles gently from center to sides.



- 6 Move onto Panel #2, which should simply align to the right edge of Panel #1. No need to overlap. Take your time, all panels will align perfectly. Repeat this step until all panels are hung on the wall.



- 7 Once the whole wall is hung with paper, use your cutting tool to remove any excess paper at the top, as well as at base board, wall edges, and corner. Make sure your blade is brand new to ensure precise and even cutting!



- 8 Enjoy your beautiful new wall! Cheers!