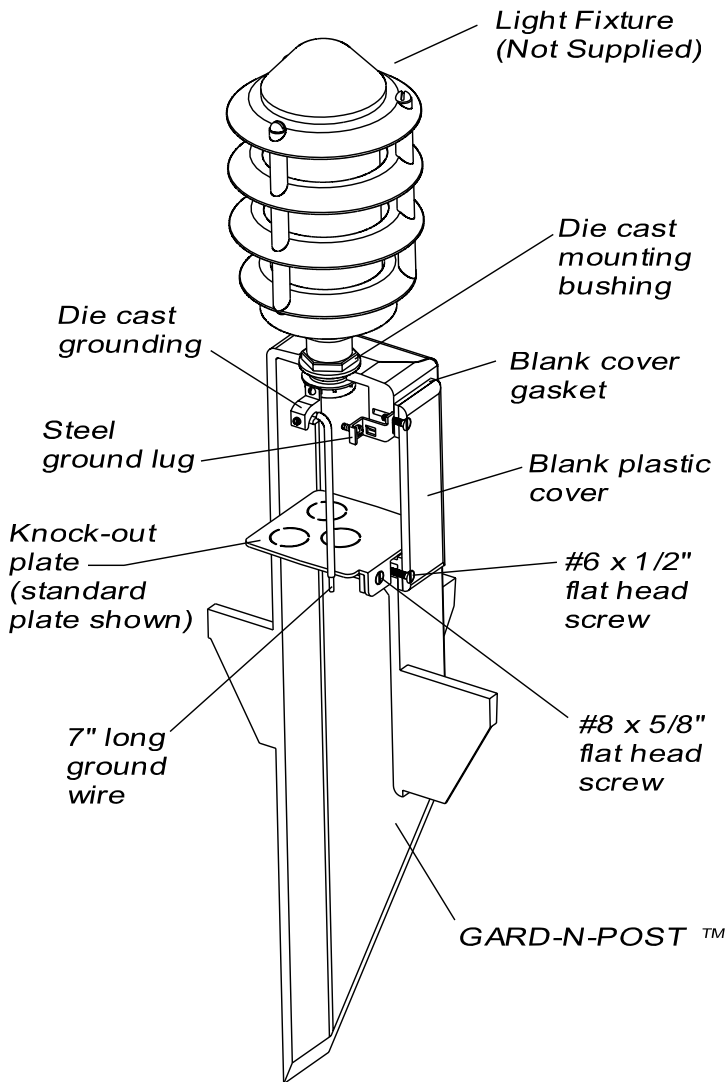


The following components are included for proper installation of the GP19B, GP19BR, GP19G, GP19W, GP26B, GP26BR, GP26G and GP26W  
**GARD-N-POST™**

- (1) GARD-N-POST™
- (1) Die cast grounding locknut
- (1) Die cast fixture mounting bushing
- (2) Blank plastic cover
- (2) Blank cover gasket
- (1) Standard knock-out plate
- (1) Low-voltage knock-out plate
- (2) #8 x 5/8" long flat head phillips screws
- (4) #6 x 1/2" long flat head phillips screws
- (1) 7" long ground wire
- (1) Plastic top plug
- (1) Die cast plain locknut
- (1) Steel grounding clip supplied with ground screw (Canada Only)
- (1) Low Voltage Separator Box



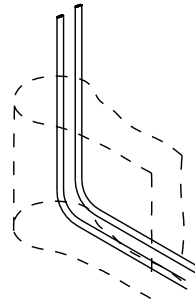
Cut-away View of assembled GARD-N-POST™ showing properly assembled component parts

**A** Arlington Industries, Inc.  
 1 Stauffer Ind. Park - Scranton, Pa. 18517  
 800-233-4717 Fax: 570-562-0646  
 www.aifittings.com - E-MAIL: sales@aifittings.com  
 Manufacturers of Quality Electrical Products

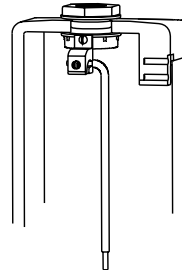
Installation Instructions For: GP19B, GP19BR, GP19G, GP19W, GP26B, GP26BR, GP26G and GP26W

GARD-N-POST™  

**1** Excavate a hole a minimum of 10 inches deep and 10 inches in diameter. Excavate a trench to the hole to accommodate the electrical service.



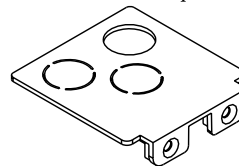
**2** Install electrical service to the excavated hole for the GARD-N-POST, making sure to provide sufficient wire to make the proper connections in the GARD-N-POST.



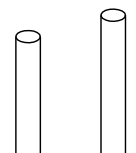
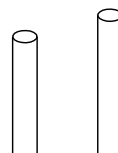
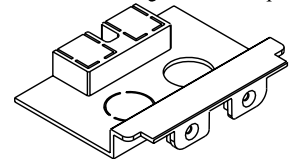
**3** For your convenience the mounting bushing, grounding locknut and ground wire have been pre-assembled.

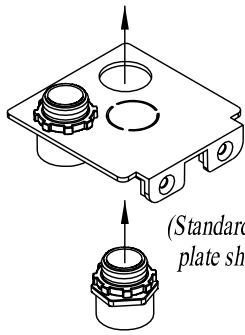
**4** Determine the number of knock-outs required for wire installation and remove them from either the standard knock-out plate or the low-voltage knock-out plate, depending upon application. (both provided)

Standard knock-out plate



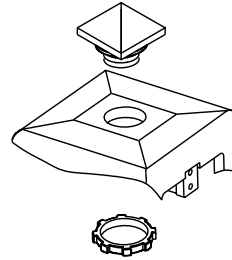
Low-voltage knock-out plate





(Standard knock-out plate shown)

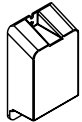
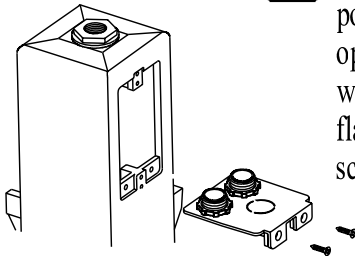
**5** Install the required connectors into the pre-determined knock-out plate to accommodate conduit or cables.



**9** If the GARD-N-POST is to be used for an outlet\* only with no light fixture, the top plug, plain locknut and sealing ring (provided) must be used to insure a rain tight installation.

\* use G.F.C.I. outlet only

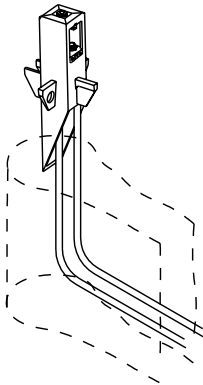
**6** Install knock-out plate into bottom portion of side opening and secure with (2) #8 x 5/8" long flat head phillips drive screws. (provided)



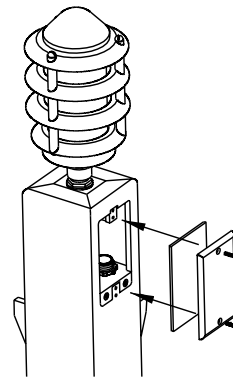
Low Voltage Separator Box  
Use only if adding low voltage device. Use with Low Voltage knock-out plate only.

Note: if an outlet is to be utilized in the GP-19 Arlington suggests the use of our Dri-Box Adapter, Catalog #DBPVI C, vertical mount, single gang, non-metallic weatherproof while-in-use device cover.

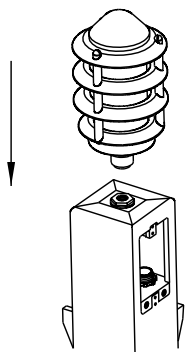
**7** Install GARD-N-POST into excavation while pulling conductors into the connectors installed in knock-out plate and low voltage lines, being sure to leave sufficient cable to make proper electrical connections. Backfill excavation.



**10** Install blank cover plates and gaskets (provided) with (4) plated #6 x 1/2" long flat head phillips drive screws (provided) to complete the installation.



**8** Install lighting fixture (not supplied) and wire in accordance with national and local electrical codes.



If you have any questions or if parts are missing from your GARD-N-POST™ kit, please call our Customer Service Department at 1-800-233-4717. Do not call or return this product to your local distributor.