

BLAZING™ TwiztLOC

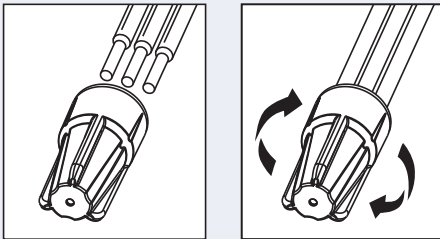
Corrosion Resistant Low Voltage Connectors



INSTALLATION INSTRUCTIONS

IMPORTANT: Turn off power before installing or removing connector. Product to be used in accordance with local and national codes.

1. Strip wires 1/2" (12.7mm) and align frayed strands and conductors. Pre-twisting of wires unnecessary.
2. Hold stripped wire ends evenly together. Lead stranded wire(s) beyond solid wire ends by approximately 1/16" (1.6mm).
3. Firmly hold wire combination together and insert it through the center of the cap on the end of the connector.
4. Continue to push and twist (clockwise) until hand tight – 1 to 2 wire wraps should be visible. Do not over torque.
5. Wipe any excess silicone in and around the wires. Do not reuse.



Blazing™ TwiztLoc TLC10 Blue/Yellow

SKU #	Selling Unit
TLC10	Bottle of 200
TLC10-25	Bag of 25

PRODUCT SPECIFICATIONS & MEASUREMENTS

Max. Voltage: 30V max. building wire, 10AMPS

Connector Size: 1" x .5"

Wire Type: Copper/Copper

Wire Range: Min #20/Max #14 (STR), #18 (SOL)

Temperature Rating: 90°C (194°F)

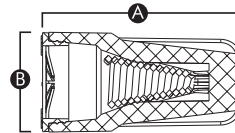
Silicone Sealant Temperature: -40°F to 400°F

Measurements (Inches):

A - 0.981

B - 0.491

C - 0.362



Selected 30V Wire Combinations

For use with solid and/or stranded combinations.

1 #18 w/1-5 #20	4 #20 w/1 #22	3 #16 w/1 #18 or 20 or 22
1 #16 w/1 #18	4 #18 w/1 #20	3-6 #20
2 #18 w/1-4 #20	1 #14 w/1 or 2 #16	2 #14
2-6 #18	2 #16 w/1 #18 or #20	2 #14 w/1 #18
1 #14 w/1-3 #18 or #20		

Contact factory for a complete list of wire combinations at 800.633.0232.

KING
INNOVATION®

50100-120 REV A 04/18

www.kinginnovation.com

(P) 800.633.0232

(F) 636.519.5410