

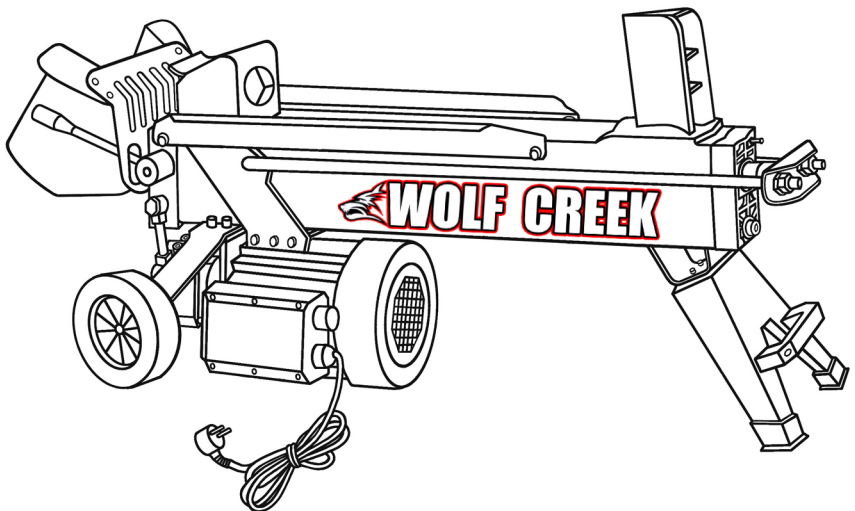


Apache 5 / Apache 7

Electric / Hydraulic Log Splitter

Operating Instructions

Read operating instructions before use!



Equipmart Ltd
Kiam House
Birchill Road
Knowsley Ind. Park North
Merseyside
L33 7TD
United Kingdom



T: 0044 151 548 5500
F: 0044 151 548 5599

© Equipmart Ltd
www.wolfcreekttools.com

Please read the manual first. It will help you assemble, prepare, operate and maintain the unit for best performance. Pay special attention to the safety instructions before operating. For future reference, please copy the model number and the serial number of the equipment you purchased in the space below.

Model Number:

Serial Number:

If you have difficulty or any problems regarding the assembling, operation or maintenance of this unit, please call customer support of an authorized dealer or the manufacturer.

Table of Contents

SECTION 1: Know your log splitter

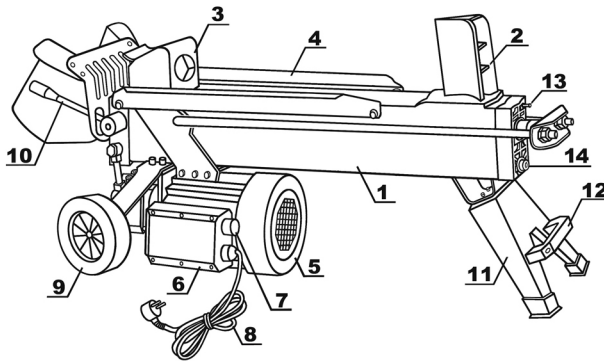
1. Machine overview	2
2. Accessories	2
3. Decals on machine	2
4. Superiority of your log splitter	4
5. Technical specifications	4
6. Component parts diagram	5
7. Electric circuit principle diagram	6
8. Hydraulic circuit principle diagram	6

SECTION 2: Safe operating instructions

1. Assembling your log splitter	7
2. Preparation before operating	7
3. Operation	8
4. Transportation	8
5. Maintenance and repair	8
6. Storage	9
7. Troubleshoot	10
8. Warranty	11

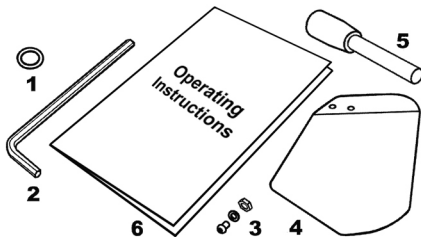
SECTION 1: Know Your Log Splitter

1. Machine overview









1. Hydraulic tank
2. Wedge
3. Ram
4. Log cradle
5. Electric motor
6. Connecting box
7. Switch
8. Power cable and plug
9. Wheel
10. Control handle
11. Front frame
12. Towing handle
13. Vent plug
14. Oil dipstick

2. Accessories









1. Copper seal at dipstick ×1
2. Allen key ×1
3. Screw, washer and nut ×4
4. Safe guard ×2
5. Control handle bar ×2
6. Operating instructions ×1

3. Decals on machine

LOG SPLITTER					
Apache 5					
230V ~	50Hz	1960 W	S6 40%	8.5A	 
Splitting Force		5 ton	IP44		
Max. Log Size		52cm		   	
Net Weight		47.5 kg			
Serial No.					
Wolf Creek Tools					

Model Plate (Apache 5)

LOG SPLITTER					
Apache 7					
230V ~	50Hz	2900W	S6 40%	12A	 
Splitting Force		7 ton	IP44		
Max. Log Size		52cm		   	
Net Weight		50 kg			
Serial No.					
Wolf Creek Tools					

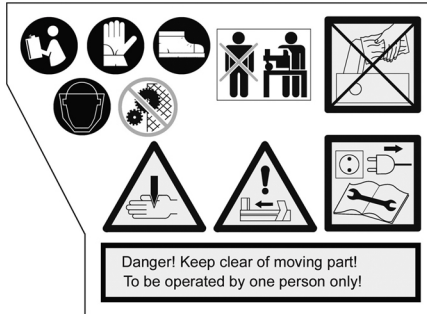
Model Plate (Apache 7)

Note: S6 %40, continuous operation periodic duty: time of one load cycle is 10 minutes, operation time at constant load is 4 minutes, operation time at no-load is 6 minutes.



WEEE label

- 1) The left figure means: Do not abandon the waste product freely; the product should be sent to relevant recycle organization.
- 2) Dispose of the packing in the proper manner. Should you wish to part with the product, dispose it in accordance with the latest provision. Regarding the detail information, please refer to us.



Safety label

Symbols meaning



Read the manual carefully before assembly, operation and maintenance.



Warning: Moving parts. Never place body between log and ram during forward or revers stroke.



Wear safety gloves.



Allow only on person to operate this machine on the workbench, keep bystanders away.



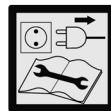
Wear safety shoes or heavy boots.



Never remove stuck log or clean the knife bare-handed.



Wear a protection mask or protective eye wear.



Maintenance, installation, adjustment and cleaning of the machine only once the power supply is disconnected according to the instructions in this manual.



Don't touch rotating parts.



Caution: Pinch point.

4. Superiority of your log splitter

Compact and powerful, the latest electric / hydraulic log splitter features a 1960 / 2900W motor that packs a whopping 5 / 7 ton of splitting force. It can slice logs up to 520mm long and 250mm in diameter easily. Unlike a gas powered log splitter, there are no loud noises and no fumes. It's the ideal choice for homeowner to use indoors or outdoors. It's small and lightweight enough for one person to easily move about. It will even fit in the trunk of your car. In addition, our technical improvements make this unit more durable, convenient, efficient, and safe for all operators.

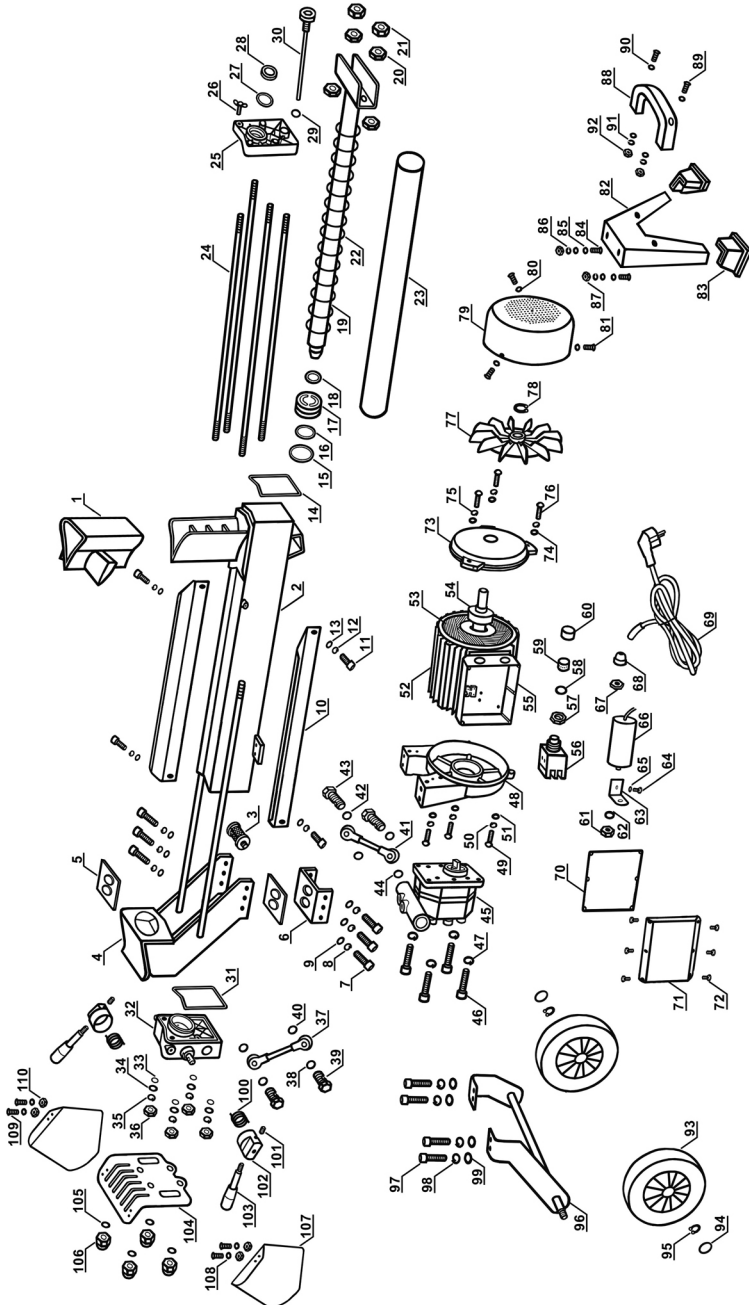
5. Technical specifications

Technical specifications		Apache 5	Apache 7
Electrical Requirement	Voltage	230V±10%	230V±10%
	Frequency	50 Hz ±1%	50 Hz ±1%
	HVF	<0.02	<0.02
Power input		1960W	2900W
Power output		1500 W	2200 W
Rated current		8.5A	12A
Motor speed		2800 rpm	2800 rpm
Thermal protector		130℃	130℃
Protection degree		IP44	IP44
Motor working mode		S6 40%	S6 40%
Power cable		3G1.0mm ²	3G1.5mm ²

Technical specifications		Apache 5	Apache 7
Machine dimension (L×W×H) (cm)		97x28x46	97x28x46
Machine net weight		47.5kg	50kg
Min. oil capacity		3.2Litre	3.4Litre
Max. splitting force		5ton	7ton
Max. splitting length		520mm	520mm
Max. splitting diameter		250mm	250mm
Hydraulic pressure		21MPa	28MPa
Cylinder inner diameter		55mm	55mm
Feed time		10s	10s
Retract time		4s	4s
Max. cylinder stroke		520mm	520mm
Noise emission value		≤68dB(A)	≤68dB(A)
Vibration of control handle		≤2.5m/s ²	≤2.5m/s ²

Environmental data		Apache 5, Apache 7	
Operation	Altitude	≤1000m	
	Temperature	5~40℃	
	Humidity	40℃	≤50%
20℃		≤90%	
Transportation & storage temperature (℃)		-25~+50	

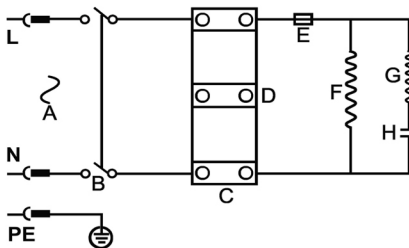
6. Component parts diagram



Note: Due to continuous product improvement, we reserve the right to change the product without prior notice.

Ref. No.	Part Description	Ref. No.	Part Description
1	Optional four way wedge	41-44	Oil tube assembly (tank -pump)
2	Tank with wedge	45-47	Hydraulic pump assembly
3	Oil filter	48-51	Motor rear plate assembly
4	Ram	52	Motor shell
5	Nylon liner	53	Stator
6-9	Base plate assembly of ram	54	Rotator
10-13	Log cradle assembly	55, 70-72	Connecting box assembly
14	Front paper seal ring	56-60	Key switch assembly
15-18	Piston and seals	61-66	Capacitor assembly
19—21	Piston shaft	67-68	Cable fastener assembly
22	Retracting spring	69	Power cable
23	Hydraulic cylinder	73-76	Motor front plate assembly
24	2-end long bolt	77-78	Fan assembly
25	Front cylinder cover	79-81	Fan cover assembly
26	Vent plug	82-87	Front frame assembly
27	Seal ring	88-92	Towing handle assembly
28	Dust-proof ring	93-95	Wheel assembly
29-30	Dipstick assembly	96-99	Wheel frame assembly
31	Rear paper seal ring	100-103	Control handle assembly
32-36	Hydraulic valve assembly	104-106	Shield assembly
37-40	Oil tube assembly (valve – pump)	107-110	Safe guard assembly

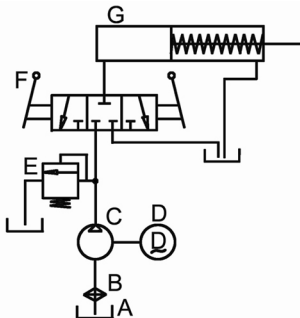
7. Electric circuit principle diagram



- A. Power cable
- B. Switch
- C. Wiring board
- D. Motor lead wire
- E. Thermal protector
- F. Main winding
- G. Aux. winding
- H. Capacitor

Note: The mains connection must have maximum 16A fuse.

8. Hydraulic circuit principle diagram



- A. Hydraulic tank
- B. Oil filter
- C. Oil pump
- D. Electric motor
- E. Relief valve
- F. Control handle
- G. Cylinder

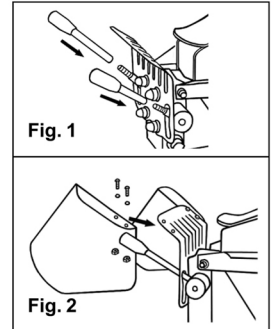
SECTION 2: Safe Operating Instructions

NOTE: This machine is only intended for homeowners to split firewood as detailed in instructions, not for any other purpose.

Danger. This machine was built to be operated according to the safety instructions in this manual. As with any type of power equipment, carelessness or error on the part of operator could endanger the personal safety and/or property of yourself and others. It can result in serious injury or death, such as amputating hands or feet, throwing objects and other unforeseeable damage. Read and follow all instructions before initial operation. The manufacturer isn't liable for any damages by disregard of the instructions.

1. Assembling your log splitter

- Cut and remove straps bound to the carton and unpack the carton.
- Remove the loose parts included with unit (i.e., operator's manual, parts assembly, etc.).
- Set the foams aside.
- Connect control handle bars. Pivot each control handle bar to its linkage part in rear of the splitter and tighten. (Fig. 1)
- Connect the safe guards. Align the holes in the safe guards with main shield, secure with wrench and screwdriver. (Fig. 2)



NOTE:

- a) Dispose of the packing in an environmental friendly manner. Take to a proper collecting point.
- b) If you notice transport damage while unpacking, notify your supplier immediately. Don't operate the machine.
- c) Read, understand and follow all safety instructions in this manual and labels on the equipment carefully.
- d) Keep the manual in a safe place for future and regular reference.
- e) Ensure the machine is disconnected from power supply while assembling.

2. Preparation before operating

- Put the machine on the level surface of a sturdy workbench 60+cm high.
- Always block the wheels to prevent movement of the log splitter while in operation.
- Oil the wedge and upper side of the tank, which would make your operating more smoothly.
- Check all nuts, bolts and hydraulic fittings are tight to be sure equipment is in safe working condition.
- Make sure your outlet, mains voltage and frequency match the data stated on the model plate (or "Technical specifications" in this manual).
- The power supply for this splitter must have the protection device of under-voltage, over-voltage, circuit breaker with a residual current device (RCD) which maximum residual current rated at 0.03A.
- Check the switch, power cable and plug are not damaged (no cracks, etc.) to exclude the risk of electric shock and circuit short.
- Check all safe shields to be sure they are in the proper position.
- Wear non-slip safety shoes, safety goggles, safety gloves and suitable work clothing. Never wear jewelry, necktie and other loose clothing.
- Logs should be cut with square ends and permissible dimensions in advance within the limited capacity.
- Uneven log (e.g. knotted, curved, etc) should not be cut.

Note:

- a) Make sure the power cable is unplugged while adjusting.
- b) After adjusting, take away the accessories on or around the unit before switching on.
- c) Ensure the motor properly earthed or apply protection device.
- d) Use only rubber-jacketed cable of minimum 2.5mm as extension cable. Never use an extension cord longer than 25 feet. Cord gage must be 14 or lower.
- e) Keep away from inflammable liquids or gases before starting the machine.
- f) Hydraulic oil is flammable and can explode. Always take a Class B fire extinguisher with you when operating this log splitter in dry area as a precautionary measure against possible flying sparks.
- g) Always check the oil level of the hydraulic reservoir before operation. Operating the log splitter without an adequate oil supply will cause severe damage to the pump.
- h) Keep handles free of oil, grease and resin.

- i) Before starting work, hydraulic pipes and hoses shall be inspected and the stopping devices should be tested.
- j) Selection and preparation of a suitable working area free from obstructions.
- k) The need to keep the working area free from obstructions, e.g. logs, split wood, etc.
- l) Check on the function of the machine: operate the unit without loading to check whether this unit works normally (Refer to terms 3. Operation below). If the noises becoming louder and the ram running erratic indicate there's excessive air or a shortage of hydraulic oil in tank for you to release vent plug or add hydraulic fluid. (Refer to Term 5. Maintenance and repair)

3. Operation

- Plug the power cable and switch on.
- Load log between log cradles and on the tank. (Fig. 3)
- Move control handles down with both hands until the log is split. (Fig. 4)
- Release any hand to stop the ram extending.
- Release both hands to retract the ram for loading next log.
- After log splitting, switch off and unplug the power cable.

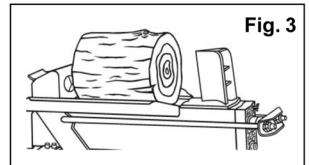


Fig. 3

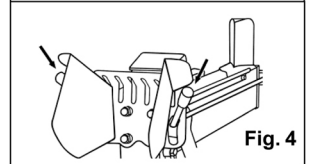


Fig. 4

Note:

- a) After log splitting, switch off and unplug the power cable.
- b) Ensure the horizontal distance between splitter and outlet is more than 3m in case of the dust influence.
- c) Allow only responsible adults who have read and understood the manual to operate this machine.
Be familiar with all controls and proper operation. Know how to stop the machine quickly in the event of an emergency.
- d) Don't operate the machine while under the influence of alcohol, drugs or medication.
- e) Only a single operator is allowed to load and operate this log splitter. Keep bystanders, helpers, pets and children a sufficient distance to the machine.
- f) Only use your hands to operate the control handles and the switch. Arms, feet, knees, rope, heavy objects and extension device are not allowed.
- g) Never put any part of your body between the extending ram and the wedge.
- h) Don't step over the splitter when the motor is running.
- i) Always split log along its grain. If across the grain, some types of wood may burst or fly out resulting in injury.
- j) If you experienced problems splitting especially hard wood, don't keep pushing on the handles. Release both control handles at once, the ram will return. If keep pushing, the ram will fail to retract. If this occurs, turn off the motor and on again to continue operation.
- k) If the log is clipped on the wedge, release both hands and unplug the power cable immediately. Knock off the log with a hammer slightly (not with your hands).
- l) Never attempt to split more than one log at a time unless the ram has fully extended and a second log is needed to complete the separation of the first log. Never attempt to split one log on top of another.
- m) Regularly clear the split wood to keep work area tidy for firm footing.
- n) Periodically check that all nuts, bolts, screws, hydraulic fittings and hose clamps are tightened.
- o) Never operate your splitter on wet, muddy or icy surface. Safe footing is essential in preventing accidents.
- p) Never leave the machine unattended with the motor running.
- q) Never use this machine in damp or rainy environment to avoid electric shock or short circuit.
- r) Operate log splitter in proper lighting.
- s) Never tamper with the motor to run it at excessive speeds. The maximum motor speed is preset by the manufacturer and is within safety limits.
- t) Switch off and unplug power cable quickly when the machine is out of order. For example: the noises becoming louder and the ram running erratic indicate there's excessive air or a shortage of hydraulic oil in tank for you to release vent bolt or add hydraulic fluid. (Refer to Term 5. Maintenance and repair)
- u) Don't pull on power supply cable to unplug.

4. Transportation

- Put in the boot of your car for distant transportation.
- Hold the towing handle to move about.

NOTE:

- a) Never move this machine while the motor is running.
- b) Be extra cautious when moving this machine on rugged and rough terrain.
- c) Be careful to keep upright, not to be tipped or crashed during transportation
- d) Never allow anyone to ride on the machine while moving.

5. Maintenance and repair

- Refer to the components drawing and parts list should it become necessary to disassemble the unit for repair or replacement of parts.

Note:

- Ensure the power cable is unplugged while performing any maintenance and repair.
- The hydraulic system is preset at the factory. Don't adjust the valve.
- Never alter this machine in any manner under any circumstances. Any alteration circumventing the design capabilities and capacities of this machine could result in serious injury and will void the warranty.
- Replace all damaged and worn parts immediately with original equipment and manufacturer's parts only.
- Wipe unit with an oiled rag to prevent rust. If the wedge becomes dull or nicked, it can be sharpened. Wear safety gloves while handling the wedge.
- Never check for leaks of hydraulic fluid with your hand. Escaping fluid under pressure can have sufficient force to penetrate skin causing serious personal injury or even death. Leaks can be detected by passing a piece of cardboard over the suspected leak and looking for discoloration.
- Never loosen or remove hydraulic fittings or the cap of hydraulic tank while the log splitter is running.
- If the motor is overload for a long time, the thermal protector in it which operating temperature is 130°C will disconnect the power of motor. Switch off and unplug the power cable, cool down the motor for half an hour and it will connect again for continual operation. If not, it's necessary for you to call your dealer for customer support.
- The troubles of hydraulic system and motor other than described above should only be handled by qualified specialists.
- Periodically check the oil level in the hydraulic reservoir. If there's a slow or erratic ram running during operation, it indicates the problem of oil shortage or excessive air in the reservoir. To solve this problem, please refer to the following Term 5. l).
- After each season use, check if the hydraulic oil need to change. Generally, this log splitter has oil filter in the tank, so just change the oil when there's abnormal louder noise or ram block during operation. To solve this problem, please refer to the following Term 5. l).
- Directions: how to changing hydraulic oil, fill the hydraulic reservoir and repel the excessive air in the reservoir.

- Disconnect the safe guards from the main shield and take off the cushions from front frame.
- Lift the towing handle and keep the tank in vertical position. (Fig.5)
- Disconnect the vent plug and dipstick from the front cylinder cover. (Fig. 5)
- If you want to change the oil, please drain the tank firstly. Put the front frame of the unit in some container, raise the wheels 5cm off the ground on blocks, and drain the hydraulic tank. (Fig. 6)
- Deposit the hydraulic fluid for refilling or change new hydraulic oil (10W AW hydraulic fluid or Dexron automatic transmission fluid).
- Refill the tank at least the range marked on the dipstick. If the tank permits, more oil added will do good to the hydraulic system for better operation.
- After refilling, insert and tighten the dipstick.
- Start the motor and operate the log splitter fully extended for several times to repel out the air in the reservoir.
- When make sure the oil level is OK and no excessive air in the tank, insert and tighten the vent plug.

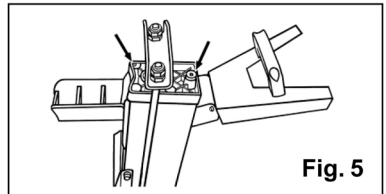


Fig. 5

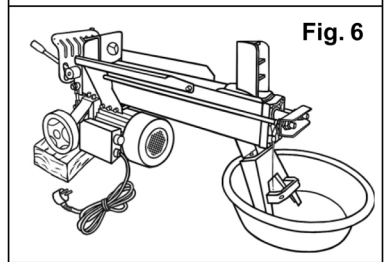


Fig. 6

Note:

The hydraulic tank is shipped with 10W AW hydraulic fluid. If it is difficult to obtain, Dexron automatic transmission fluid can be substituted. You must drain the system. Don't mix Dexron and 10W hydraulic fluid. Use only clean oil and take care to prevent dirt from entering the hydraulic reservoir.

6. Storage

NOTE:

- Store this unit switched off and unplugged.
- Allow machine to cool 5 minutes after every use before storing.
- Protect power supply cable from heat, sunshine, aggressive liquids and sharp edges.
- Store unit in a clean, dry area. Don't store it unprotected outdoors, next to corrosive materials or in damp environment.
- Store this splitter where children can't start it.

7. Troubleshoot

Problems that may arise when using the log splitter and recommended remedies are given in the table below.

Problem	Possible Cause	Action To Take
Log fails to split	<p>Incorrect position of the log</p> <p>Log exceeds permitted dimensions or the wood is too hard for the capacity of the machine</p> <p>Wedge does not cut</p> <p>Oil Leak</p> <p>Hydraulic pressure is too low</p>	<p>Position the log correctly</p> <p>Try trimming the log or using other means to reduce the size of the log</p> <p>Sharpen the wedge, check for burs or nicks, file if necessary</p> <p>Locate the leak using a piece of cardboard or wood</p> <p>Contact your dealer</p>
Log Pusher/Cam advances jerkily or with strong upward vibrations	Air in the circuit	Check oil level. Fill oil if necessary. If problem remains, contact dealer

For any other problems you may have and/or general queries please contact us on 0151 548 5500.

8. Warranty



We warrant this product against any manufacturing defects in the material and workmanship for a period of 12 months from date of purchase. This warranty is only valid for domestic / home use.

This warranty does not cover any defects and/or damages caused by the following:

- Misuse of the product
- Negligence or lack of maintenance
- Normal wear and tear on parts
- Use of non original manufacturer parts
- Modification or removal of parts

The purchaser is responsible for all related expenses (parts, labour and return costs) if the product is not covered under warranty.

Original receipt must be included when returning to:

Wolf Creek Tools
 Kiam House
 Birchill Road
 Knowsley Ind. Park North
 Knowsley
 L33 7TD

 Return sheet

Name: _____

Address: _____

Purchased From: _____

Date of Purchase: _____

Model: _____

Note: Please remember to attach a copy of your receipt