

AUXO



**READ THIS MANUAL BEFORE USING THE PRODUCT.  
FAILURE TO FOLLOW INSTRUCTIONS AND SAFETY  
PRECAUTIONS IN THIS MANUAL CAN RESULT IN SERIOUS  
INJURY OR DEATH.**

**FOR EASY FUTURE REFERENCE, DOWNLOAD THIS USER  
MANUAL AND WARRANTY CARD AT:**

[www.auxo-official.com/pages/download](http://www.auxo-official.com/pages/download)

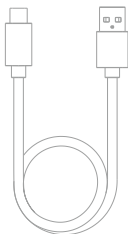
## What's in the Box



Celsius x1



Power Adapter x1



USB-C Charging Cable x1



Loading Tool x1



Tweezers x1



Cotton Swabs x 5



Cleaning Brush x1



Concentrate Chamber x1



User Manual x1



Quick Start Guide x1

## QUICK START

It is recommended to fully charge the device before first use.

Rotate the mouthpiece 180°, lift the magnetic mouthpiece from the Celsius base to expose the heating oven.



### Loading Dry Herb:



Fine



Medium  
★ Best



Coarse



Use medium-ground material. The grind should be small and crumbled but not too fine. A powdery grind will restrict airflow.

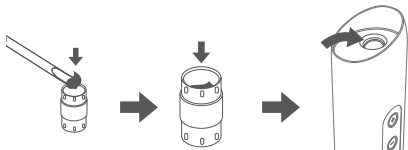
Loosely fill the heating oven to the rim and tamp down gently. It is not recommended to fill above the black line of the oven\*.

Ensure the oven rim and other surfaces are completely free of debris for a tight seal.

Put the magnetic mouthpiece back on the Celsius base. Make sure it is seated correctly.

\*Recommended fill weight: 0.3g

### Loading Wax/Concentrates:




Use the loading tool to place a small amount of concentrate in either side of the concentrate chamber. Do not fill both sides of the chamber at once.

For best performance, AUXO recommends using only 0.05g of material (about the size of a dry lentil).

Insert the concentrate chamber right side up into the heating oven.

Put the magnetic mouthpiece back on the Celsius base. Make sure it is seated correctly.

## Turning On/Off the Device

- Press the power button  on the bottom of the device for 3 seconds to turn on/off. The device's LED ring light will illuminate/fade out and make a short vibration respectively.
- If no activity is detected for 10 minutes or longer, Celsius will turn off automatically.
- If the surface temperature of the device is over  $118\pm 1.8^{\circ}\text{F}$  ( $48\pm 1^{\circ}\text{C}$ ), the device will implement overheat protection mode and automatically stop working.
- If the battery runs out of power, the LED ring light will blink 10 times in red and short vibrations will occur shortly before it turns off automatically.

## Setting Up the Device

1. There are 5 temperature settings (see table below). When the device is on, press the '+/-' buttons to choose between different settings and the LED ring light will indicate the settings accordingly. In Pro Mode, the ring light reaches a full circle.
2. Press the '+' button for 3 seconds to start heating. The device will vibrate to indicate the start of a session and enter its preheating phase.
3. The LED ring light will blink in blue cyclically during the preheating phase. When preheating ends, the LED ring light turns to a steady green and the session begins.
4. When the session is over, the LED ring light will switch from green to blue.
5. Assess the flavor of your material after every session. If you wish to continue with another session, long press '+' again.

## Mode Settings

Indicator	Temperature	Recommended Use	Session	Preheat Time
	Setting 1 374°F (190°C)	Light roast	180s	12-16s
	Setting 2 392°F (200°C)	Medium roast		
	Setting 3 428°F (220°C)	Heavy roast		
	Setting 4 500°F (260°C)	For concentrates		25-30s
	Pro Mode 284-500°F (140-260°C)	Customize your own heating curve via the AUXO App	40-180s	6-30s

\*Pro Mode's default temperature is 428°F (220°C)

\*In case of the LED ring light turning to a steady red, an error may be occurring in the device. Contact AUXO for troubleshooting if such an event happens.

## Pro Mode

In the customizable Pro Mode, you can create a 40s-180s heating curve with five different temperature settings of your liking. Details are covered in the AUXO App section.

## Charging & Battery Level

1. Due to safety precautions, the product cannot be used while charging.
2. To charge the device, connect one end of the USB-C charging cable to your device and the other end to a power adapter.
3. Charging via the standard power adapter takes approximately 1.5 hours for a full charge. Every full charge generates approximately 9 sessions of usage.
4. To check the current battery level of your device, gently shake the device twice and the LED ring light will indicate the current battery level. Each bar indicates ~20% battery level.
5. When the battery runs out of power, the LED ring light will blink 10 times in red and short vibrations will occur. The device will then turn off automatically.

## AUXO Apps

### Download and Setup

#### For iOS

1. Scan the QR code or search for 'All-On Browser' in the App Store. Download and install the app onto your phone.
2. Go to [www.auxo-app.com](http://www.auxo-app.com).
3. Allow the app to access the phone's Bluetooth and wireless data.
4. Connect your device to the app (see next step).

#### For Android

1. Scan the QR code or search for 'AUXO Connect' on the Google Play Store. Download and install the app onto your phone.
2. Connect your device to the app (see next step).



All-On Browser



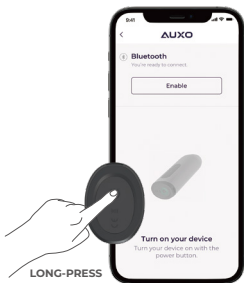
AUXO Connect

## Connecting Your Device to the App

1. Turn on the device.
2. Turn on Bluetooth on your phone and place the device near your phone.
3. When only one device is found, select accordingly. The LED ring light will blink 3 times when paired successfully. If multiple devices are found, the selected device will blink slowly to indicate selection; if paired successfully, the LED ring light will blink 3 times.
4. If the connection is unsuccessful, restart the app and try connecting again.

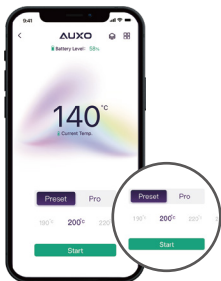
If you're having trouble pairing your Celsius device with your phone, please ensure the following:

1. Your AUXO App is up to date.
2. Your Celsius device is turned on (restart if necessary).
3. The Bluetooth on your phone is turned on.
4. The device is near your phone (as close as possible).
5. If on Android, your location services are enabled (mandated by Android).



## Preset Mode

1. Select 'Preset' and swipe the temperature bar left and right to choose your preferred temperature.
2. Tap 'Start' to begin your session.



## Pro Mode

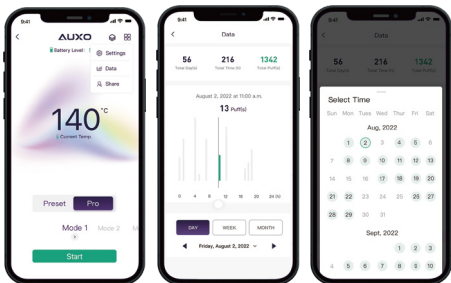
In the customizable Pro Mode, you can create a 40s-180s heating curve with five different temperature settings of your liking. On the main page, click on the 'Pro' button and enter Pro Mode. Move the sliders accordingly to your preferred temperatures. Tap 'Set and go' once you have confirmed your heating curve.

You are also able to give your customized mode a name and share it with your friends by tapping the share icon on the top right. Email, QR code, and social media options are available for sharing with your friends so they can replicate your experience.



## View My Activity

1. Open the menu on the top right corner, and tap the 'Data' button; find your historical activities on the page, including time, draws, and more.
2. If you can't access this page, check if the 'Data' function is enabled in your 'Account Information'.



## Unit of Temperature

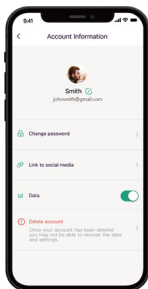
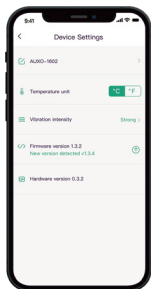
1. Open the menu in the top right corner, and tap the 'Settings' button.
2. In the 'Temperature Unit' section, select your preferred scale, Fahrenheit (°F) or Celsius (°C).

## Vibration Intensity:

1. Open the menu in the top right corner, and tap the 'Settings' button.
2. In the 'Vibration Intensity' section, adjust the vibration intensity to your preference.

## Delete Account:

In 'Account Information', tap on 'Delete account'. Once deleted, data and settings may not be recovered.





## CLEANING & MAINTENANCE

Cleaning is highly recommended after each use.

### Heating Oven

1. Let the oven cool down to room temperature. Pull up the mouthpiece to expose the oven.

•**After using dry herb:** Use the cleaning brush to clean residue out of the oven.

•**After using concentrates:** Pour out the concentrate chamber onto a table.

Wipe clean with a cotton swab dipped in 90% isopropyl alcohol.\*

\*Please make sure the concentrate chamber has cooled down before cleaning.

2. Dip a cotton swab in 90% isopropyl alcohol and wipe the oven clean.



**Isopropyl alcohol is highly flammable.**

**Let the device dry completely before heating.**

### Mouthpiece

1. Remove the mouthpiece from the battery by pulling up the mouthpiece.



**Don't handle if hot.**

•**Basic cleaning:** Insert the cleaning brush into the gap of the mouthpiece, gently run the brush to the end and move it back and forth to remove residue. The surface can be wiped clean with cotton pads dipped in 90% isopropyl alcohol.

•**Thorough cleaning:** The mouthpiece can be disassembled into 6 separate parts by lifting the silicone component on the bottom of the protruding filter piece. Once isolated, submerge them in 90% isopropyl alcohol. To see disassembling instruction videos, visit the AUXO website or AUXO YouTube channel.



2. Let the mouthpiece dry completely before use.

\*Please note: cleaning and maintenance must NOT be performed before the device is turned off and cools down to room temperature. Do not submerge the battery/device base in any form of liquid.

## STORAGE

- Do not expose the device to direct sunlight, dust, moisture or mechanical shock.
- Do not place heavy loads on the device or drop it, the device may no longer work properly if such events occur.

## Temperature and Humidity



Charging temperature: 50-113°F (10 to 45°C)  
Working temperature: 14-140°F (-10 to 60°C)  
Storage temperature: 68±9°F (20±5°C)



Operating humidity: 45%-75%  
Storage humidity: 45%-75%

## SAFETY

- Do not attempt to disassemble or repair the device as damage or personal injury may occur.
- Keep body parts, clothing, etc. away from the heat source to prevent scalding or damage to personal property.
- To prevent scalding, do not touch the heating oven and concentrate chamber before they have completely cooled down.
- Refrain from using other power adapters not provided with the device when charging your Celsius.
- Refrain from using the device while it is charging.
- Keep hands dry when touching the device while it is charging to prevent electric shock.
- The device is not recommended for use outdoors while it is raining, or in other circumstances where it may be exposed to water.
- Do not use while pregnant or breastfeeding.
- If any abnormality is observed, stop using immediately and contact a professional after-sales service technician via the AUXO website.

## FCC/CE/RoHS

- AUXO Celsius is in compliance with RoHS and the council EMC 2014/30/EU.
- FCC Caution: Any changes or modifications not expressly approved by the party responsible for compliance could void the user's authority to operate the equipment.
- This device complies with part 15 of the FCC Rules. Operation is subject to the following two conditions: (1) This device may not cause harmful interference, and (2) this device must accept any interference received, including interference that may cause undesired operation.
- This equipment has been tested and found to comply with the limits for a Class B digital device, pursuant to part 15 of the FCC Rules. These limits are designed to provide reasonable protection against harmful interference in a residential installation. This equipment generates, uses and can radiate radio frequency energy and, if not installed and used in accordance with the instructions, may cause harmful interference to radio communications. However, there is no guarantee that interference will not occur in a particular installation. If this equipment does cause harmful interference to radio or television reception, which can be determined by turning the equipment off and on, the user is encouraged to try to correct the interference by one or more of the following measures:

- Reorient or relocate the receiving antenna.
- Increase the separation between the equipment and receiver.
- Connect the equipment into an outlet on a circuit different from that to which the receiver is connected.
- Consult the dealer or an experienced radio/TV technician for help.

## **FCC Radiation Exposure Statement**

This equipment complies with FCC radiation exposure limits set forth for an uncontrolled environment. This transmitter must not be co-located or operating in conjunction with any other antenna or transmitter.

## **Environmentally Friendly Disposal**

You can help protect the environment! Please remember to respect local regulations and hand in any electronic equipment you wish to dispose of at an appropriate waste disposal center.

## **WARRANTY**

### **Limited Warranty Coverage**

AUXO provides a limited warranty on authentic products purchased from the AUXO official website and authorized retail stores against defects in materials and/or workmanship under normal use. In order to keep this limited warranty in effect, the product must have been handled and used as prescribed in the instructions accompanying this warranty. AUXO warrants only to the original purchaser of the product and the limited warranty is nontransferable. The limited warranty does not apply to products that were sold by any third-party resellers.

AUXO offers a 10-year limited warranty on the device from the date of purchase. The USB-C charging cable, power adapter, loading tool, concentrate chamber, cotton swabs, cleaning brush, and tweezers are not covered under the limited warranty.

In no event shall any recovery against AUXO exceed the actual price paid for the purchase of the product.

### **Not Covered Under Warranty**

This warranty does not apply to certain situations and conditions, including but not limited to:

1. Any AUXO product sold by an unofficial AUXO website or unauthorized retail store(s).
2. Damage(s) caused by accident, abuse, misuse, negligence, flood, fire, earthquake, or other external causes.
3. Damage(s) caused by the device being exposed to or coming in contact with moisture (e.g., liquids, water, rain, extreme humidity, unusually heavy perspiration, or other moisture), or extreme thermal or environmental conditions (e.g., sand, food, dirt, or similar substances).
4. Damage(s) caused by operating the device or charging adapter outside the permitted or intended use as prescribed in the user manual.
5. Damage(s) in the heating oven due to tampering or counterfeit or caused by filling with unrecognized or unauthorized materials.
6. Damage(s) caused by modifications to alter functionality or capability.
7. Cosmetic damage occurring through wear and tear, including but not limited to scratches, dents, and broken plastic on ports.

8. Any device where the serial number has been tampered with, erased or obscured, or is not genuine.
9. Normal performance degradation of batteries. Please contact AUXO Customer Support for more information on battery degradation.
10. Any other attachments and accessories which can be purchased separately.

## Obtaining Warranty Service

Please retain your purchase receipt or other acceptable proof of purchase for your records. If no purchase receipt or other proof of purchase is provided, the warranty start/end dates will be determined according to the device serial number.

Contact the AUXO Customer Support Team first at [support@auxo-official.com](mailto:support@auxo-official.com) and submit a support request to initiate the warranty service. We encourage you to include as many details as you can in the request, such as pictures and videos to help the team diagnose the issue.

An RMA (Returned Material Authorization) number and shipping instructions will be sent to you if the issue cannot be resolved. Following the shipping instructions, you will need to send the product along with the RMA number.

### Note:

1. You must return your approved-for-warranty device or accessory before AUXO sends you a replacement on your warranty claim.
2. Customers are responsible for all shipping costs associated with the warranty process.
3. AUXO is not responsible for lost or damaged returns sent by the customer.

## Return & Refund Policy

Please carefully research the product you are interested in before purchasing.

Refunds are only available for new and unused devices purchased on [www.auxo-official.com](http://www.auxo-official.com) and must be returned to AUXO within fourteen (14) days of receipt. If the tamper-proof seal is broken, a refund cannot be honored. AUXO will not refund devices purchased through other authorized retailers; in such case, any refunds must be obtained from the authorized retailer whom you purchased the device from and will be subject to the retailer's policy on refunds.

Note: The customer is responsible for the return shipping fee.

## Additional Warranty Terms and Conditions

**THERE ARE NO WARRANTIES WHICH EXTEND BEYOND THE DESCRIPTION ON THIS CARD. AUXO DISCLAIMS AND EXCLUDES ANY IMPLIED WARRANTIES, INCLUDING BUT NOT LIMITED TO MERCHANTABILITY, AFTER THE EXPIRATION OF 10 YEARS AFTER PURCHASE BY THE END USER.** Some states do not allow limitations on how long an implied warranty lasts, so the above limitation may not apply to you.

**In no event will AUXO be liable for any special or consequential damages arising from the use of this product, nor for injury to any person, or any claim for damages arising from the use of this product.** Some states do not allow the exclusion or limitation of incidental or consequential damages, so the above limitation may not apply to you.

## WARRANTY CARD

Product: \_\_\_\_\_

Serial Number: \_\_\_\_\_

**Date of Purchase** (Per purchase receipt):

Date (YYYY/MM/DD): \_\_\_\_\_

**Store Information:**

Store Name: \_\_\_\_\_

Store Address: \_\_\_\_\_

City: \_\_\_\_\_ State: \_\_\_\_\_ ZIP Code: \_\_\_\_\_

**Customer Information:**

Customer Address: \_\_\_\_\_

City: \_\_\_\_\_ State: \_\_\_\_\_ ZIP Code: \_\_\_\_\_

**AUXO reserves the right of final decision in all warranty cases.  
AUXO may interpret and revise the content of this warranty card.**

**Please present your warranty card together with your proof of  
purchase in order to obtain your warranty service.**

For more information please visit [www.auxo-official.com](http://www.auxo-official.com)  
or email us at [support@auxo-official.com](mailto:support@auxo-official.com)

Not for sale to minors.

This vaporizer is only intended for use with products made from federally legal hemp as defined in relevant provisions of the 2018 Farm Bill and codified at 7 U.S.C. § 1639o(1) and 21 U.S.C. § 802(16)(B)(i) and is not intended for use with any illegal controlled substance.

This product is not designed or intended to vaporize any nicotine or liquid product.

**WARNING:** Reproductive Harm - [www.P65warnings.ca.gov](http://www.P65warnings.ca.gov)

Visit us at [WWW.AUXO-OFFICIAL.COM](http://WWW.AUXO-OFFICIAL.COM)

FOLLOW US @AUXOVAPOR



© AUXO All rights reserved. Subject to alteration.