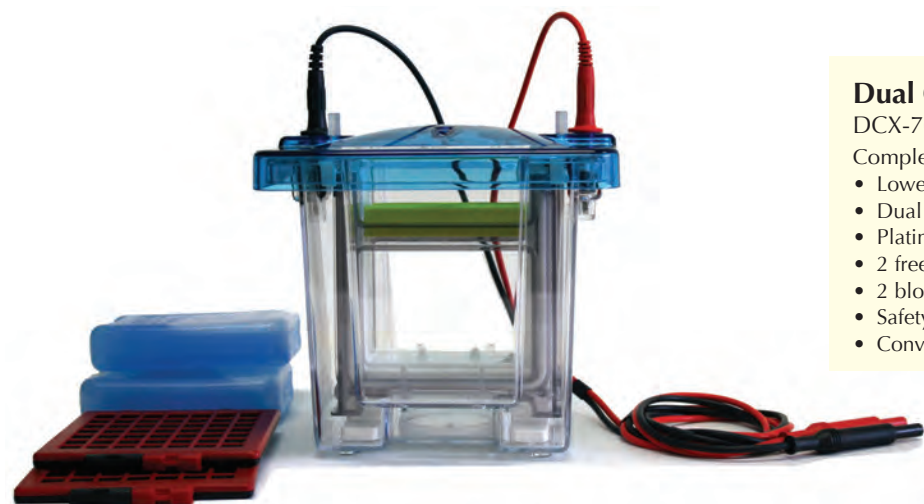


## DCX-700 series runs or blots two mini-gels



### Dual Cool System

DCX-700

Complete System:

- Lower buffer reservoir
- Dual capacity core
- Platinum electrodes
- 2 freezer blocks
- 2 blotting cassettes with sponge pads
- Safety cover with power leads
- Conversion plate for running one gel at a time

### APPLICATIONS

- SDS-PAGE • Native PAGE • Nucleic Acid PAGE • Western Blot

### FEATURES

- Dual capacity with dual function - run either 2 slab gels or 2 Western blots (as shown in figure 1).

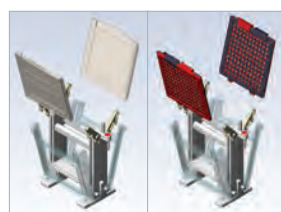


figure 1.

- Each gel or blotting cassette is placed into a double-gasketed receptacle in the core for increased perimeter pressure, ensuring a tight fit and preventing surrounding buffer interference. Hinged core design allows easy loading and removal of gel or blotting cassettes.
- Dual Cool System, cat. # DCX-700 will accept 10cm(w) x 10cm(l), or 10cm(w)x 9cm(l) precast gels. Alternatively, handcasting can be accomplished using Gel Wrap Casting Bundle and Multi-Caster Kits.
- Gel or blotting cassettes can be extracted from the core without removing the core from the tank, allowing for quick processing of samples. This feature also allows for the immediate reuse of buffer for the next set of samples.
- Provides the capability of running 2 gels or 2 blots simultaneously under identical temperature controlled buffer conditions using freezer blocks.
- Color-coded anode and cathode safety features on all components.
- Tank design includes stirring bar corral to maintain even temperature.
- There are no loose parts to keep track of on the central core.
- Electrophoretic transfers do NOT require the purchase of special transfer modules.

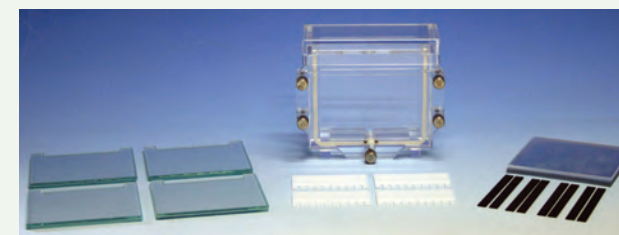
SPECIFICATIONS	
Number of gels	1-2
Compatible Precast gels	RunBlue™* NuPAGE®** PAGEr®** SERVAGel™**
Compatible Precast Gel Sizes (cm)	10(w) x 10(l) 10(w) x 9(l) 10(w) x 8(l)
Handcast Glass Plate Set Dimensions (cm)	10(w) x 10(l)
Cathode Buffer Volume for 2 Gels	200mls
Anode Buffer Volume	400mls (minimum) - 800mls
Total Buffer Volume for 2 Blots	940mls
Slab Gel Run Time	30-90 minutes
Blot Run Time	75 minutes
Recommended Power Supply	EPS-300 X or EPS-200 X
Overall Dimensions W x D x H (cm)	16.5 x 15.2 x 21.6

\*RunBlue™ is a trademark of Abcam, NuPAGE is a trademark of Invitrogen, PAGEr is a trademark of Lonza, and SERVAGel is a trademark of Serva

## 2 HANDCAST GEL OPTIONS FOR DUAL COOL SYSTEMS

Online video instructions for both of these methods can be found on our website.

### OPTION 1: Multi-Caster Method



#### DCX4K Multi-Caster Kit, 4-place

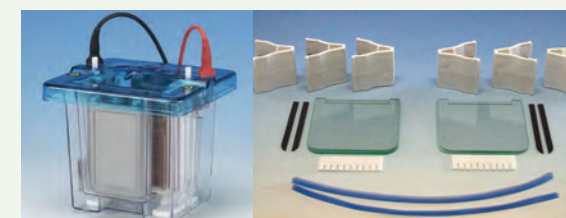
Complete System:

- Multi-Caster Chamber with lid, silicone gasket, 5 stainless steel thumbscrews, backfill port connecting to central filling trough (See page 23 for assembly diagram)
- 4 sets notched glass plate sets
- 4 sets of spacers (choice of 0.75mm, 1.0mm or 1.5mm thickness)
- 4 combs (choice of 10, 14 or 16 well)
- Polycarbonate separation sheets
- Acrylic shim plate

#### 4-Place Multi-Caster Kit Ordering Information - Cat. #'s

# Comb Wells	Spacer & Comb Thickness 0.75mm	Spacer & Comb Thickness 1.0mm	Spacer & Comb Thickness 1.5mm
10	DCX4K-0710	DCX4K-1010	DCX4K-1510
14	DCX4K-0714	DCX4K-1014	DCX4K-1514
16	DCX4K-0716	DCX4K-1016	DCX4K-1516

### OPTION 2: Gel Wrap® Casting System (see description above right)



#### DCX-HC Dual Cool Gel Wrap® Casting Bundle, 2-place

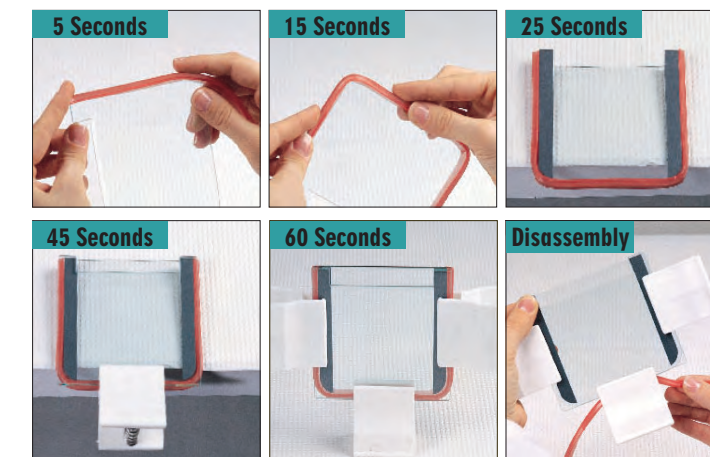
Complete System:

- DCX-700 Dual Cool Mini-Vertical
- 2 Gel Wrap® Gaskets
- 2 sets of Gel Wrap® glass plates
- 2 sets of Gel Wrap® spacers
- 2 combs
- 6 clamps

#### Dual Cool Gel Wrap® Casting Bundle, 2-Place - Cat. #'s

# Comb Wells	Spacer & Comb Thickness 0.75mm	Spacer & Comb Thickness 1.0mm	Spacer & Comb Thickness 1.5mm
10	DCX-HC0710	DCX-HC1010	DCX-HC1510
14	DCX-HC0714	DCX-HC1014	DCX-HC1514
16	DCX-HC0716	DCX-HC1016	DCX-HC1016

**THE GEL WRAP® CASTING SYSTEM:** Set-up time for gel casting can be accomplished in less than one minute. Gel Wrap® is designed to perform two functions simultaneously - it holds onto the back glass plate, making it easy to handle, and it seals the spacers. Online video instructions can be found on our website.



COMB OPTIONS, material: PTFE, tooth depth: 9.5mm, overall length: 7.9cm				
Cat. #	# of Teeth	Thickness of Teeth (mm)	Width of Teeth (mm)	Recommended Max. Sample Vol./Well (µl)*
MXV-0701	1	0.75	66.6	356
MXV-0710	10	0.75	5.23	28
MXV-0714	14	0.75	3.3	19
MXV-0716	16	0.75	2.92	16
MXV-1001	1	1.0	66.6	474
MXV-1010	10	1.0	5.23	37
MXV-1014	14	1.0	3.3	24
MXV-1016	16	1.0	2.92	21
MXV-1501	1	1.5	66.6	712
MXV-1510	10	1.5	5.23	56
MXV-1514	14	1.5	3.3	35
MXV-1516	16	1.5	2.92	31

\*Maximum loading volume is calculated by taking 75% of the total tooth volume.

### ORDERING INFORMATION \*

CAT. #	DESCRIPTION
<b>DUAL COOL MINI-VERTICALS - 10CM(W) X 10CM(H)*</b>	
DCX-700	Dual Cool Mini-Vertical, CE, 2-place, Complete System
<b>Accessories and Related Products for DCX-700</b>	
EBX-BC-700	Accessory Blotting Cassette, includes sponge pad
EBX-SP-700	Accessory Sponge Pads, set of 4
DCX-SP-108	Accessory shim plate for 8cm(w) Bio-Rad gels
DCX-P1010R	Gel Wrap® Glass Plate Set
DCX-E0710	Gel Wrap® Gasket, 0.75mm thick
DCX-E1010	Gel Wrap® Gasket, 1.0mm thick
DCX-E1510	Gel Wrap® Gasket, 1.5mm thick
DCX-S0710R	Gel Wrap® Spacer Set, 0.75mm thick
DCX-S1010R	Gel Wrap® Spacer Set, 1.0mm thick
DCX-S1510R	Gel Wrap® Spacer Set, 1.5mm thick
DCX-MC-4	<b>Mini-Vertical Multi-Caster, 4-place, Unit Only</b>
DCX-P1010	Multi-Caster Glass Plate Set
DCX-S0710	Multi-Caster Spacer Set, 0.75mm thick
DCX-S1010	Multi-Caster Spacer Set, 1.0mm thick
DCX-S1510	Multi-Caster Spacer Set, 1.5mm thick
EPS-300 X	<b>Power Supply, CE, 10-300V, 4-500mA</b>