



GALLERY SMITH
EST. 2008

Aotearoa Art Fair 2024

SUSANNE KERR

Susanne Kerr's artworks are composed of quiet allegories that mimic life, providing a touchstone to the human experience. Over the past decade Kerr has interrogated the social connections – spoken and unspoken – that bind people together.

The body of work presented at Aotearoa Art Fair is a continuation of Kerr's endeavour to find balance and alchemy between space, paint, subject, emotion, movement, and energy. Her conceptual threads are poised delicately between the psychological unease of the underlying narratives and the beauty of aesthetic depiction.

Kerr observes her immediate natural environment to explore the interdependency between humans and nature. A small selection of recent works are inspired by the botanical forms collected and painted by Sydney Parkinson while on Captain Cook's first voyage, which were later compiled into a book published by Joseph Banks titled *Florilegium*.

Underlying the luscious and bountiful colour-drenched environments is a concern for our precarious relationship with nature. The histories of encounter, exchange, depletion, and survival that our surroundings could tell. In these works, Kerr weaves predatory ribbon-like forms, serving as visual allegories of power, control, influence, and internal conflict; representing human emotions and our manipulation of the natural environment.

"...my recent artworks reference the intermingling of native and introduced species from 200 years of colonisation. I want to consider the changing nature of our environment and highlight our interdependence and the need to walk alongside it with care."

Kerr's constructed worlds overflow with cultural references and biodiversity, where native, endemic and introduced species intertwine, and elements of Chinoiserie and Ikebana are woven into the botanical scenes. Oriental art and Eastern philosophy have long informed her works. Asymmetry, a flattened picture space, stylised nature, Ikebana forms and the concept of *Ma* are incorporated – imparting a quiet, dynamic energy in her works.

"...the presence and resolution of white space as a structural device and drawing tool reflects my interest in the concept of Ma. Simply put, it is the space or void between drawn parts – evoking the invisible or an emptiness full of possibilities."

This layering of influences and narratives extends into Kerr's painting processes; where many of her artworks repurpose existing paintings, overworking or manipulating them with sgraffito or a process Kerr describes as 'cut-paintings'.

Re-purposing, disassembling and reassembling echoes the physical loss of remnant habitats within nature. As Kerr draws connections between different fragments of history, culture, and botanical imagery, she is considering the tenuous relationship of humans to the environments in which they reside in and are a part of.







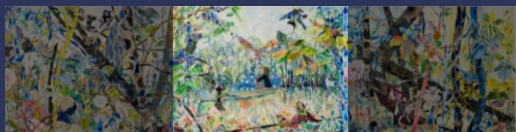
Liminal, 2023

gouache, watercolour, acrylic, ink, gold leaf and hand-cut paper
paintings on Hahnemühle watercolour paper, mounted on board
90x360cm, triptych

\$ 38,000 NZD



Liminal, 2023
detail, left panel
90x120cm



Liminal, 2023
detail, centre panel
90x120cm



Liminal, 2023
detail, right panel
90x120cm



Liminal, 2023
detail



Apple Tree, 2023
gouache, acrylic, ink, and hand-cut paper paintings on Hahnemühle
watercolour paper, mounted on canvas
102x75cm, framed

\$ 8,500 NZD



Apple Tree, 2023
detail



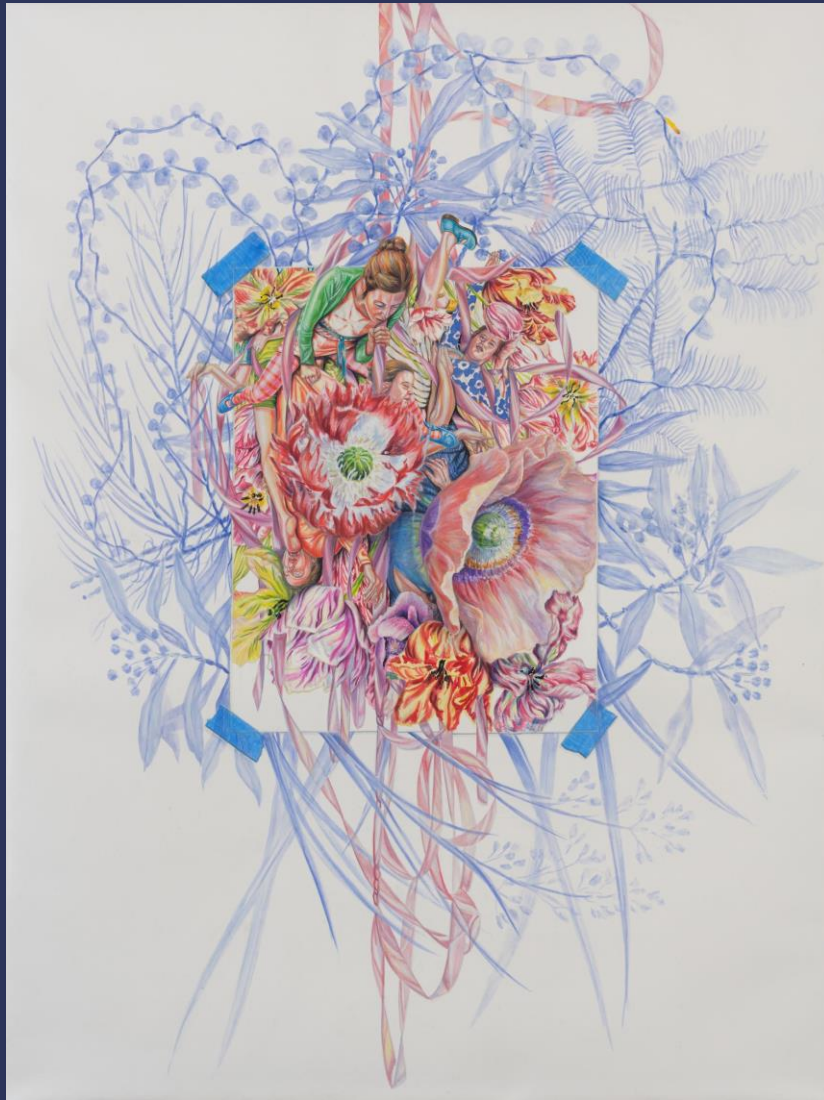


Remnant #2, 2022
gouache, acrylic, ink, gold leaf, and hand-cut paper paintings on
Hahnemühle watercolour paper, mounted on canvas
102x70cm, framed

\$ 8,500 NZD



Remnant #2, 2022
detail



Florilegium (White), 2023-24
gouache and acrylic on Hahnemühle watercolour
paper, mounted on canvas
100x75cm, framed

\$ 8,500 NZD



Florilegium (White), 2023-4
detail



Florilegium (Blue), 2024
gouache and acrylic on Hahnemühle watercolour
paper, mounted on canvas
100x75cm, framed

\$ 8,500 NZD



Florilegium (Blue), 2024
detail





Florilegium – The Anatomy of Loss, 2024
gouache and acrylic on Hahnemühle watercolour
paper, mounted on canvas
100x75cm, framed

\$ 8,500 NZD

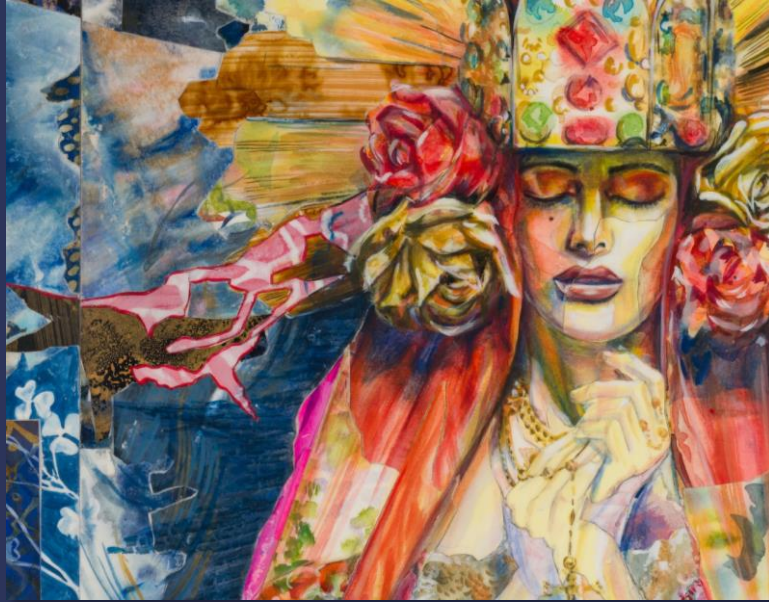


Florilegium – The Anatomy of Loss, 2024
detail



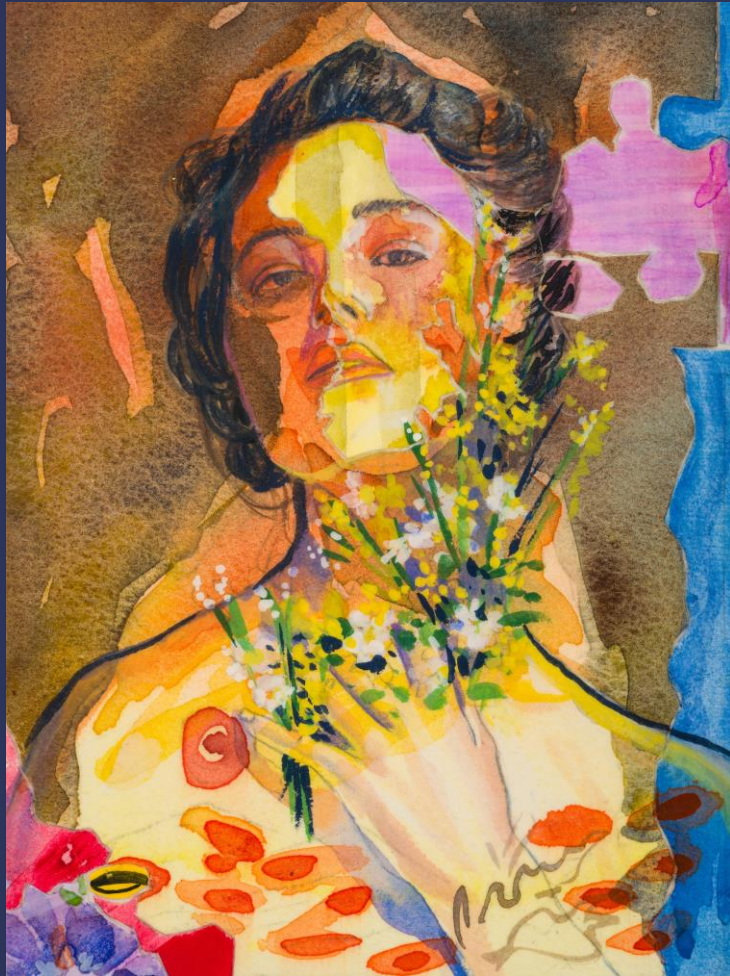
Wordless Speech, 2023
gouache, watercolour, ink, wax, gold leaf and hand-cut paper paintings
on Hahnemühle watercolour paper, mounted on board
70x60cm, framed

\$ 5,900 NZD



Wordless Speech, 2023
detail

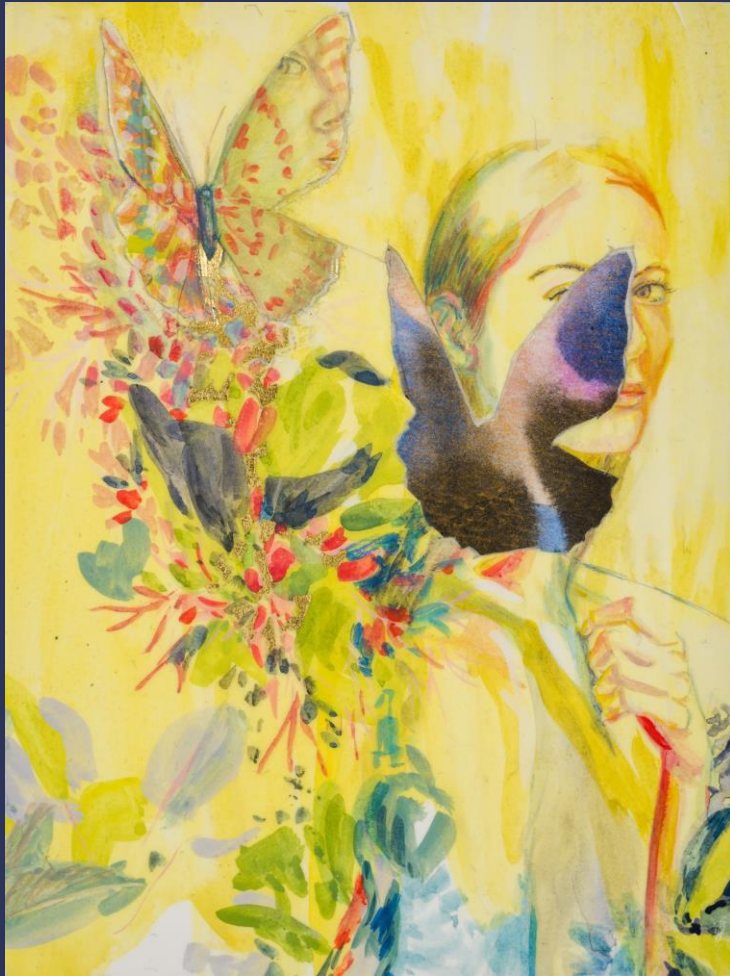




Phōs, 2022

gouache, watercolour, and hand-cut paper paintings on Hahnemühle
watercolour paper mounted on board
15x10cm, framed

\$ 1,500 NZD



Echo, 2022

gouache, watercolour, gold-leaf, and hand-cut paper paintings on
Hahnemühle watercolour paper mounted on board
15x10cm, framed

\$ 1,500 NZD



SUSANNE KERR

lives Wellington, NZ

QUALIFICATIONS

Bachelor of Fine Arts (BFA), Ilam School of Fine Arts, University of Canterbury, NZ (2000)

SOLO EXHIBITIONS

- 2024 *Aotearoa Art Fair*, presented by Gallerysmith, Auckland
2023 *Remnants*, Pātaka Art & Museum, Porirua, Wellington
2021 *Human Traces*, Gallerysmith, Melbourne, Victoria
2020 *Fragile State*, Milford Galleries, Queenstown
2018 *Call to a Home I Never Had*, Milford Galleries, Queenstown
2015 *Tiny Ruins*, FHE Galleries, Auckland
2013 *The Unfolding*, FHE Galleries, Auckland
Transit, FHE Project Space, Auckland
2012 *An Intimate Geography*, Waiheke Art Gallery, Waiheke Island
2011 *Domesticated Animals*, Toi Poneke Gallery, Wellington
2009 *Blink*, Saatchi and Saatchi Gallery, Wellington
2007 *Looking at You*, Sanderson Gallery, Auckland
2006 *Things we Forget*, Page Blackie Gallery, Wellington
2005 *Quiet*, Page Blackie Gallery, Wellington
2004 *Tension*, Artigiano Lorne Street, Auckland
2000 *Ephemeral*, SoFA Gallery, Christchurch
Fabric and Thread, SoFA Gallery, Christchurch

SELECTED GROUP EXHIBITIONS

- 2023 *XV: PAST PRESENT FUTURE*, Gallerysmith, Melbourne
2021 *Fauna*, Milford Galleries, Queenstown
I AM WOMAN, Gallerysmith, Online Exhibition
Sydney Contemporary, presented by Gallerysmith, Online Exhibition
The Whakatipu Chronicle, Milford Galleries, Queenstown
2020 *The Review*, Milford Galleries, Queenstown
Flora, Milford Galleries, Queenstown
Behind Closed Doors, Milford Galleries, Dunedin
2019 *The Wakatipu Chronicles*, Milford Galleries, Queenstown
New Works, Milford Galleries, Queenstown
The Royal Queenstown Easter Show, Milford Galleries, Queenstown
The Earl Street Journal, Milford Galleries, Queenstown
Pathways to Paradise, Waiheke Gallery, Waiheke Island
Staging Post: Landscape and Sculpture, Milford Galleries, Queenstown
18/19, FHE Galleries, Parnell, Auckland
2018 *Spring Catalogue*, Milford Galleries, Queenstown
Puawai AO, FHE Galleries, Ponsonby, Auckland
The Arrow, Milford Galleries, Queenstown
2017 *Waiheke Artist in Residence Survey Exhibition*, Waiheke Art Gallery, Waiheke Island
2016 *Ponsonby Road Summer*, FHE Galleries, Ponsonby, Auckland
Auckland Art Fair, presented by FHE Galleries

- I Come From Under the Earth*, FHE Galleries, Ponsonby, Auckland
2015 *ART-UP 2015*, FHE Galleries, Ponsonby, Auckland
Unknown, FHE Galleries, Auckland
2014 *Kaba Ko*, FHE Galleries, Auckland
Auckland Art Fair, presented by FHE Galleries
2013 *Seven Wishes*, FHE Galleries, Auckland
Path Upon the Air, FHE Galleries, Auckland
[IN]box, ArtBox L-Pavilion Gallery, Cnr St Asaph and Madras St, Christchurch
Cherished Memory, FHE Galleries, Auckland
2012 *Allure*, FHE Galleries, Auckland
Touch, FHE Galleries, Auckland
2011 *The Artists: A Snapshot of Contemporary NZ Art Practice*, Sanderson Gallery, Auckland
Hidden Rooms, Sanderson Gallery, Auckland
Scrutiny, Sanderson Gallery, Auckland
150x150x150, Sanderson Gallery, Auckland
Locale, Sanderson Gallery, Auckland
Advent, Sanderson Gallery, Auckland
Small Things, Waiheke Art Gallery, Auckland
12 Walls, Sanderson Gallery, Auckland
2010 *Advent*, Sanderson Gallery, Auckland
150x150x150, Sanderson Gallery, Auckland
2009 *Auckland Art Fair*, presented by Sanderson Gallery
Advent, Sanderson Gallery, Auckland
The Artists: A Snapshot of Contemporary NZ Art Practice, Sanderson Gallery, Auckland
Showcase, Sanderson Gallery, Auckland
For What It's Worth, Sanderson Gallery, Auckland
2008 *Advent*, Sanderson Gallery, Auckland
2006 *The Artists: A Snapshot of Contemporary NZ Art Practice*, Sanderson Gallery, Auckland
2005 *Ethereal*, Artigiano Lorne St, Auckland
Natale, Page Blackie Gallery, Wellington
2004 *BLACKWHITE*, Artigiano Lorne St, Auckland
Unknown, Artigiano Parnell, Auckland
9x3, Artigiano Lorne St, Auckland
2000 *Transitions*, SoFA Gallery, Christchurch
Cycle, SoFA Gallery, Christchurch

SELECTED CURATED/AWARD EXHIBITIONS

- 2021 *Parkin Drawing Award Exhibition*, Academy Galleries, Wellington
2019 *Parkin Drawing Award Exhibition*, Academy of Fine Arts, Wellington
The Walker & Hall Waiheke Art Award, Waiheke Island
The Wallace Art Awards (traveling), Pataka Art + Museum, Wellington; The Suter Gallery, Nelson; CoCA Gallery, Christchurch; Wallace Gallery, Morrinsville
2018 *The Wallace Art Awards*, The Pah Homestead, Auckland
Winner, Michael Evans Figurative Award, *The Walker & Hall Waiheke Art Award*, Waiheke Island

- 2015 *The Wallace Art Awards* (traveling), The Pah Homestead, Auckland; Pataka Art + Museum, Wellington
Merit Award, *The New Zealand Printmaking and Painting Award*, Hamilton
- 2014 *The Wallace Art Awards*, The Pah Homestead, Auckland
- 2013 *New Zealand Printmaking and Painting Award*, Hamilton
- 2012 *Wild at Heart*, Pataka Art + Museum, Wellington
The Wallace Art Awards (traveling), TSB Bank Wallace Arts Centre, Auckland; The Dowse Art Museum, Wellington
New Zealand Printmaking and Painting Award, Hamilton
- 2011 *Apart Together*, Pataka Art + Museum, Wellington
People's Choice Award, *The Wallace Art Awards*, TSB Bank Wallace Arts Centre, Auckland
Zinni Douglas Merit Award, *The Walker & Hall Waiheke Art Award*, Waiheke Island
New Zealand Printmaking and Painting Award, Hamilton
Molly Morpeth Canaday Art Award, Whakatane
Central Otago Art Award, Otago
Cliftons Art Award, Wellington
NZ Art Show Signature Piece Art Award, Wellington
- 2010 *The Walker & Hall Waiheke Art Awards*, Waiheke Island
Molly Morpeth Canaday Art Award, Whakatane
- 2009 *Mind Games: Surrealism in Aotearoa*, Hastings City Art Gallery, Hastings
New Zealand Printmaking and Painting Award, Hamilton
- 2008 *The Wallace Art Awards*, Wallace Trust Gallery, Auckland
The Walker & Hall Waiheke Art Award, Waiheke Island
- 1998 *CoCA Art Award*, Christchurch
- 1997 *CoCA Art Award*, Christchurch

SELECTED PUBLICATIONS + ARTICLES + VIDEO FOOTAGE

- 2024 *A natural constant in artist's work*; The Post, January 24, pp.14, Wellington
- 2023 *Susanne Kerr: A sense of discord and unease*; The Eastbourne Herald, 15 December, pp.12, Wellington
- 2023 *A woman's perspective*; Wellington Regional News, 21 November, pp.9, Wellington
- 2021 Susanne Kerr - Human Traces, Art Guide Australia (Magazine and online article)
<https://artguide.com.au/susanne-kerrs-human-traces/>
- 2021 *Self Portrait: Botanical Forms*; ArtZone, pp 52-54, Auckland
- 2020 *Art seen: December 10*, Otago Daily Times, Dec 10
Botanical forms, self-portrait interview, ArtZone, Oct 13, 2020 <https://www.artzone.co.nz/post/botanical-forms>
- 2017 *Student Art Guide*; Published by Advanced Distribution Ltd, Auckland
- 2015 *Susanne Kerr - The Pretenders and The Believers*; Documentary Footage on Vimeo (5,25 mins) at <https://vimeo.com/123818658>, Director: Stephanie Bennett, Filmmaker/Editor: Scott Ewing
- 2015 Rewarding dig into the past; Author: T,J,McNamara, New Zealand Herald, 13th September 2015

- 2015 *Notes From Waiheke*; Art book published by Waiheke Gallery, Waiheke Island, Edited by Linda Chalmers,
- 2014 *Susanne Kerr- Forming Figures*; Documentary Footage on Vimeo (4,50mins) at <https://vimeo.com/107970196>, Director: Stephanie Bennett, Filmmaker/Editor: Scott Ewing
- 2014 *We are all connected*; Waiheke Herald Arts Diary, Gulf News, 18th September 2014
- 2014 *Susanne Kerr Trailer*, Documentary Footage on Vimeo (3,53 mins), Director: Stephanie Bennett, Filmmaker/Editor: Scott Ewing
- 2013 *Rare Twists of Imagination*; Author: T,J,McNamara, New Zealand Herald, 3rd August 2013,
- 2012 *Artist in Residence*; Author: Matthew Muir, Waiheke Herald Arts Diary, Gulf News, 28th June 2012
- 2012 *One hundred days on Waiheke*; Waiheke Herald Arts Diary, Gulf News, May 2012
- 2011 *Artist proud to show work at hometown*; Author: Priyanka Bhonsule, Stuff Online Article, 8th November 2011
- 2011 *10,98 seconds of Wellington Artists*; Lennart Maschmeyer 2011, Wellington
- 2011 *THE ARTISTS*, 21 Practitioners in New Zealand Contemporary Art c, 2011-2013; Auckland, Sanderson Ltd 2011,
- 2009 *THE ARTISTS*, 21 Practitioners in New Zealand Contemporary Art c, 2009-2011; Auckland, Sanderson Ltd 2009,
- 2008 *Mind Games, Surrealism in Aotearoa*; Hamilton, Hastings City Art Gallery 2009, Digital Book CD,
- 2006 *THE ARTISTS*, A Snapshot of Contemporary New Zealand Art Practice c,2007-2008; Auckland, Artigiano Ltd, 2006

RESIDENCIES

- 2012 Waiheke Island Artist in Residence (3 months), Auckland,

COLLECTIONS

- Walker and Hall Collection (2018)
James Wallace Arts Trust Collection (2014, 2013, 2011)
The Prospect Collection (2014, 2013)
The Museum Hotel Collection, Wellington (2011)
Private Collections in NZ, Asia, Australia, USA, England and Europe



Enquiries please contact:
Gallery Director, **Marita Smith**
marita@gallerysmith.com.au +61 425 809 328

GALLERYSMITH
EST. 2008

Gallerysmith | Melbourne | Victoria | Australia
+61 425 809 328 | www.gallerysmith.com.au