



Depend on Wigluv for all **CRITICAL EXTERIOR WEATHER-SEALING DETAILS.**

Wigluv is a tenaciously sticky, low-profile, acrylic sealing tape. Constructed of a special vapor-permeable polyolefin (PO) film, reinforcing mesh, and pressure-sensitive glue, SIGA-Wigluv will bond even the most difficult substrates in extreme climate conditions. Primer is required for masonry and soft fiberboard.

CHARACTERISTICS

AVAILABLE WIDTHS	2.4", 4", 6", 9"
ROLL LENGTH	82', 131' (2.4" ONLY)
THICKNESS	14 MILS
WATER VAPOR TRANSMISSION	1.7 PERMS
UV STABILITY	12 MONTHS

- ✓ high adhesive strength, in both hot and cold temperatures
- ✓ semi-permeable (1.7 perm) material allows damp substrates to dry out
- ✓ split release paper on rolls 4" and wider makes application fast and accurate

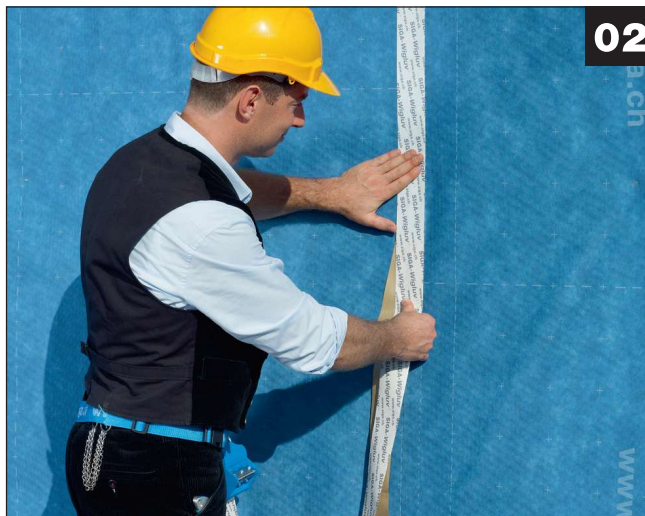


INSTALLATION INSTRUCTIONS

Seams and Overlaps



- Align Wigluv 60 with the dashed tape-centering line, imprinted along the factory edge
- For panelized materials, center Wigluv 60 evenly over the Joint

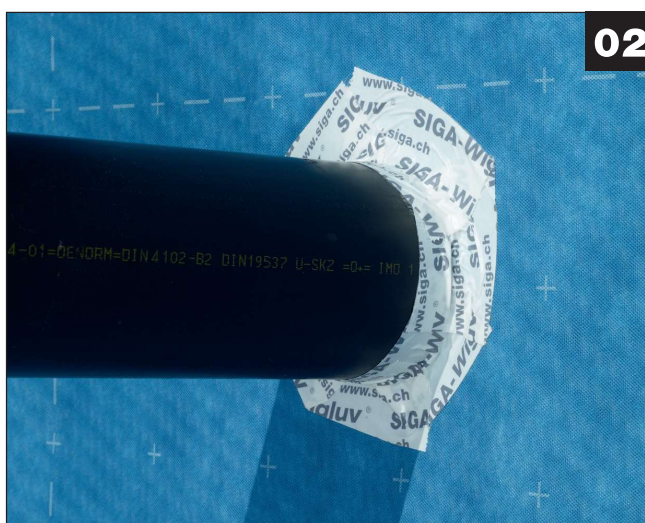


- Apply it without tension and creases and press on firmly with hand pressure

Round penetrations



- Apply Wigluv 60 pieces half on the penetration and half on the wall
- Start from the bottom and work to the top
- Press firmly to adhere and seal Wigluv 60 to the penetration



- How it should look

All SIGA products are backed by a 10 year limited warranty. Reference www.sigacover.com for complete details. We want you to maximize the performance potential of Wigluv on your project. Contact one of our Application Advisors for assistance, from architectural details to jobsite training.