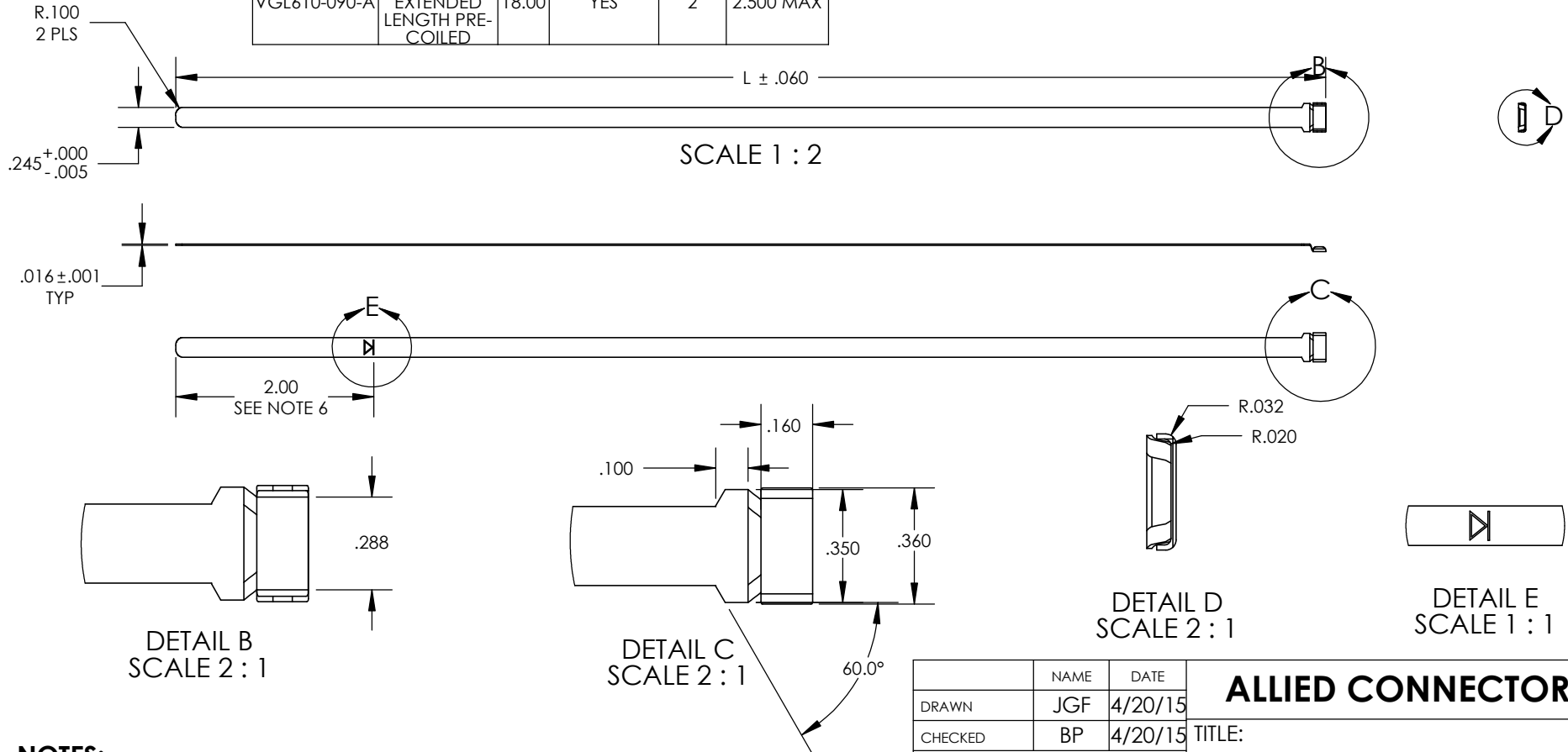


PART NUMBER DESCRIPTION TABLE					
P/N	DESCRIPTION	L ± .060	PRE-COILED Y/N	# OF WRAPS	I.D OF WRAPPING
VGL610-052	STANDARD BAND	14.25	NO	0	N/A
VGL610-052-A	STANDARD BAND PRE-COILED	14.25	YES	2	1.800 MAX
VGL610-090	STANDARD BAND EXTENDED LENGTH	18.00	NO	0	N/A
VGL610-090-A	STANDARD BAND EXTENDED LENGTH PRE-COILED	18.00	YES	2	2.500 MAX

REV	DESCRIPTION	DATE	INITIALS
A	INITIAL RELEASE (EWOM# 2015-005)	4/20/15	JGF
B	CHANGED WIDTH FROM .250" TO .245"	11/4/15	JGF



NOTES:

1. DRAWING TO BE INTERPRETED PER ASME Y14.5
2. MATERIAL: 300 SERIES STAINLESS STEEL W/ PASSIVATION AND HEAT TREATMENT
3. ALL PARTS TO BE FREE OF OIL, GREASE, DIRT, AND/OR ANY FOREIGN MATERIALS
4. ALL SHARP CORNERS TO HAVE .005" MAXIMUM RADIUS (UNLESS OTHERWISE SPECIFIED)
5. NO BURRS PERMITTED
6. STAMPED TAIL LENGTH INDICATOR, STAMPING DEPTH .001/.004", BACKSIDE MUST BE SMOOTH WITH NO PRETRUSION OF STAMPING

	NAME	DATE	ALLIED CONNECTORS	
DRAWN	JGF	4/20/15		
CHECKED	BP	4/20/15	TITLE:	
<small>PROPRIETARY AND CONFIDENTIAL THE INFORMATION CONTAINED IN THIS DRAWING IS THE SOLE PROPERTY OF ALLIED CONNECTORS. ANY REPRODUCTION IN PART OR AS A WHOLE WITHOUT THE WRITTEN PERMISSION OF ALLIED CONNECTORS IS PROHIBITED.</small>			STANDARD BAND	
<small>UNLESS OTHERWISE SPECIFIED: DIMENSIONS ARE IN INCHES TOLERANCES: FRACTIONAL ±1/64 ANGULAR: MACH ±1° TWO PLACE DECIMAL ±.01 THREE PLACE DECIMAL ±.005</small>			SIZE	DWG. NO.
			A	VGL610-XXX-STNRD
			SCALE: N/A	SHEET 1 OF 1