

4

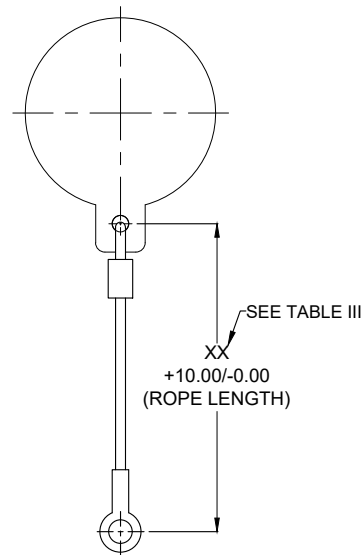
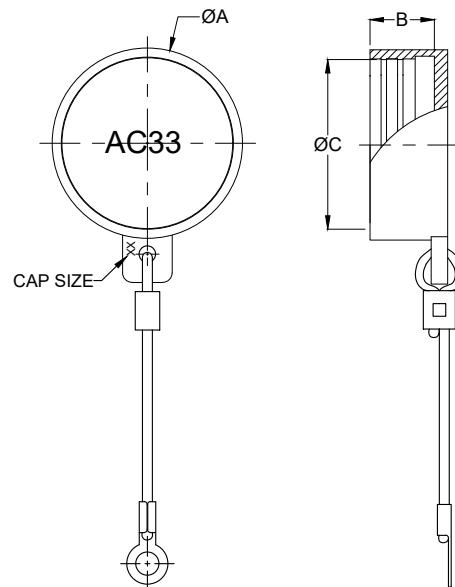
3

2

1

D

D



PART NUMBER FOR BRAIDED NYLON ROPE
WITH SOLID RING
V48-AC33-XX-LXX-X-RXX

PART NUMBER FOR BRAIDED NYLON ROPE
WITH TERMINAL (STANDARD)
V48-AC33-XX-LXX-X

TABLE I		
SOLID RING SPECIFICATION		
CAP SIZE	DASH NUMBER	ØD
9	R22	Ø18.00
11	R24	Ø23.00
13	R25	Ø26.00
15	R26	Ø30.00
17	R27	Ø32.20
19	R28	Ø36.30
21	R29	Ø39.00
23	R30	Ø42.60
25	R31	Ø44.70

C

C

→

←

B

B

TABLE III	
PART NUMBER EXPLANATION: V48-AC33-XX-LXX-X-RXX	
SHELL SIZE	DASH NUMBER (SOLID RING OPTIONAL)
75=ROPE LENGTH	S = SILICONE(MATERIAL) (STANDARD)
100=ROPE LENGTH	N = NEOPRENE(MATERIAL)
110=ROPE LENGTH	
125=ROPE LENGTH (STANDARD LENGTH)	

TABLE II				
PART NO.	CAP SIZE	ØA	B	ØC
V48-AC33-09-LXX-X-XX	9	Ø19.00	11.70	Ø15.24
V48-AC33-11-LXX-X-XX	11	Ø22.14	11.70	Ø18.40
V48-AC33-13-LXX-X-XX	13	Ø25.35	11.70	Ø21.59
V48-AC33-15-LXX-X-XX	15	Ø28.30	11.70	Ø24.66
V48-AC33-17-LXX-X-XX	17	Ø33.00	11.70	Ø29.46
V48-AC33-19-LXX-X-XX	19	Ø34.58	11.70	Ø31.04
V48-AC33-21-LXX-X-XX	21	Ø37.50	11.70	Ø34.26
V48-AC33-23-LXX-X-XX	23	Ø40.68	11.70	Ø37.44
V48-AC33-25-LXX-X-XX	25	Ø43.85	11.70	Ø40.61

A

A

		NAME	DATE	VGL ALLIED CONNECTORS
DRAWN	PNT	07-12-20		
CHECKED	JJ	07-12-20		TITLE :
UNLESS OTHERWISE SPECIFIED :				DUST CAP FOR 38999 RECEPTACLE
DIMENSIONS ARE IN MM TOLERANCES : FRACTIONAL : ±1/64 ANGULAR:MACH : ±1° TWO PLACE DECIMAL : ± 0.10				
				SHEET 1 OF 1

4

3

2

1

