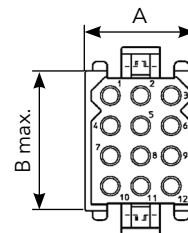
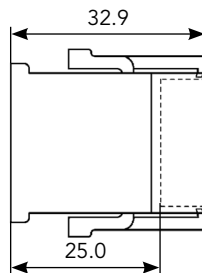
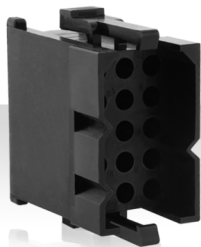


## Cable plug without strain relief hood & without discrimination cavities (wire acceptance: 4.19mm)



Part number	Nbr. of contact*	A	C max.
Black UL94 V2			
SMS2P1	2	15.0	17.8
SMS3P1	3	18.6	
SMS4P1	4	23.7	
SMS6P1	6	18.6	22.9
SMS9P1	9		27.9
SMS12P1	12		33.0
SMS15P1	15		38.1
SMS18P1	18	23.7	43.2
SMS24P1	24		33.0
SMS36P1	36	49.1	

\*Contacts supplied separately

Note: all dimensions are in mm